



COBIS Annual Research Survey 2016 School Data Summary Report

In case of enquiries please contact COBIS by emailing cpd@cobis.org.uk.
Copyright © 2016 GL Education Ltd.





Working with COBIS to support international schools

The Annual Research Survey of the growing COBIS family represents an invaluable benchmarking tool for international schools around the world. We are delighted, once again, to work closely with the COBIS executive on this project which helps to support the work they do on behalf of the membership.

For over 30 years, GL Education has been a provider of high-quality, research-based assessments for children's education, mental health and wellbeing. We provide COBIS schools around the world with the tools to deliver personalised learning that improve attainment and ensure that every student reaches their potential; a 360 degree approach to assessment that delivers a whole pupil view.



gl-education.com

international@gl-education.com

+44 (0)20 8996 3369

COBIS Annual Research Survey 2016

This report details the findings of the COBIS Annual Research Survey, conducted in 2016, in partnership with GL Education. This research project was undertaken to help develop a better understanding of the growing global COBIS family of schools, as well as the British International Education sector as a whole. The results are supporting lobbying activities, informing planning for future CPD events, and helping facilitate increased school-to-school networking, communication and support.

COBIS represents more than 250 high-quality British International Schools in more than 75 countries worldwide. These schools educate c.135,000 pupils and employ more than 30,000 teachers and support staff.

The Annual Research Survey was carried out between 5 October 2016 and 6 November 2016. 104 schools responded to the survey. The following report provides a summary of the findings. All data presented represents responding schools unless otherwise specified. The Research Survey was supported with data from ISC Research Ltd.

Membership Category

There are 3 levels of membership in the COBIS Membership Framework. These membership levels respond to the diversity of the sector.

COBIS Accredited Members have undergone a successful British Schools Overseas (BSO) inspection. COBIS Members have satisfied the COBIS Board of their quality and commitment to a future BSO inspection. COBIS Candidate Schools are new schools or those soon to open, which are working towards COBIS Member status.

- 33% of COBIS schools are Accredited Members, 58% are Members and 8% are Candidate Schools.

Geographic Location

There are currently 266 COBIS schools worldwide, located in 76 countries. For the purpose of reporting and high-level analysis, COBIS schools are grouped into five geographical regions: Africa, Americas, Asia, Europe and the Middle East.



Number of COBIS schools by country

Country	Number of COBIS schools
Ascension Island	1
Azerbaijan	2
Bangladesh	1
Belgium	4
Bermuda	1
Brazil	2
Brunei	1
Bulgaria	5
Cameroon	1
China	8
Croatia	2
Cyprus	1
Czech Republic	10
Denmark	1
Egypt	7
France	2
Georgia	2
Germany	2
Greece	4
Hong Kong	1
Hungary	3
India	2
Indonesia	1
Italy	6
Japan	2
Kazakhstan	2
Kenya	7
Kingdom of Bahrain	1
Kuwait	4
Kyrgyzstan	1
Luxembourg	1
Madagascar	1
Malawi	2
Malaysia	4
Mauritius	1
Mexico	1
Mongolia	2
Montenegro	1

Country	Number of COBIS schools
Morocco	1
Myanmar	1
Nepal	1
Netherlands	2
Nigeria	45
Norway	2
Oman	2
Pakistan	1
Panama	1
Philippines	2
Poland	9
Portugal	3
Qatar	5
Republic of Congo	1
Republic of Korea	1
Romania	13
Russia	4
Saudi Arabia	1
Serbia	2
Sierra Leone	1
Slovakia	1
Slovenia	1
Spain	14
Sweden	1
Switzerland	6
Tanzania	1
Thailand	1
Tunisia	1
Turkey	3
USA	4
Uganda	1
Ukraine	1
United Arab Emirates	16
United Kingdom	8
Uzbekistan	1
Venezuela	1
Vietnam	2
Zambia	5

Number of School Sites

- Some COBIS schools are based on more than one site or campus. The different sites may cater for different age groups, or different catchment areas. Of the responding schools, 73% have a single site whilst the remaining 27% have multiple sites.

Founding Date

- Of the responding schools, the earliest was founded in 1926.

School Phases

- The most common phase taught in all responding COBIS schools is Primary.
 - 28% of responding schools teach Pre-school
 - 87% of responding schools teach EYFS
 - 91% of responding schools teach Primary
 - 79% of responding schools teach Middle
 - 72% of responding schools teach Secondary
 - 63% of responding schools teach Sixth Form
- 65% of responding schools teach cross-phase. The most common cross-phase taught is EYFS to Sixth form (38% of schools).

Age Range

- The most common age taught in responding schools is 11.
- The average minimum age taught in responding schools is 3.47.
- The average maximum age taught in responding schools is 16.05.

Pupil Numbers

- The average number of pupils in all responding schools is 688. The average primary class size is 18. The average secondary class size is 17.
- Whole school pupil numbers across all responding schools range from 22 to 4332.
- Overall, in the past five years pupil numbers in 85% of schools have increased, 6% of schools have seen a decrease in pupil numbers whilst in 12% of schools, pupil numbers have remained roughly the same.

Pupil Backgrounds

- Within the responding schools, the number of nationalities within any individual school ranges from 2 to 99.
- On average, 62% of students in responding COBIS schools do not have English as their mother tongue.

Boarding

- 12% of responding COBIS schools offer boarding.
- The number of boarders in any one school ranges from 17 to 332.

Teacher Numbers

- The total number of teachers across all responding COBIS schools is 7827.
- Whole school teacher numbers of all responding schools range from 5 to 359.
- It is helpful to review this data by school size and by region.
 - Schools with pupil numbers in the range 2166 to 4332 have the highest ratio of teachers to pupils, whilst schools with pupil numbers in the range 22 to 68 have the lowest.
 - Schools in the Middle East region have the highest ratio of teachers to pupils, whilst schools in the Africa region have the lowest.

Teaching Assistant Numbers

- The total number of teaching assistants across all responding COBIS schools is 2272.
- Whole school teaching assistant numbers of all responding schools range from 0 to 100.
- It is helpful to review this data by school size and by region.
 - Schools with pupil numbers in the range 480 to 958 have the highest ratio of teaching assistants to pupils, whilst schools with pupil numbers in the range 22 to 68 have the lowest.
 - Schools in the Middle East region have the highest ratio of teaching assistants to pupils, whilst schools in the Americas region have the lowest.

Other Staff Numbers

- The total number of other staff members across all responding COBIS schools is 4635.
- Whole school other staff member numbers of all responding schools range from 1 to 280.

Annual Fees

- Annual fees in responding COBIS schools at the point of report generation range from 835 to 66,474 GBP (£). Local currencies were converted to GBP using current rates at the point of report generation.

Source of Pupil Entry

- The main source of pupil entry at responding COBIS schools worldwide is international families (48% of schools).
- Following the main source of entry, other significant sources of pupil entry across all responding schools are International families (50 schools), Local families (48 schools), Specific companies/employers (34 schools) and Feeder schools (23 schools).

Curriculum Followed

- The most common curriculum taught by responding COBIS schools worldwide is the UK curriculum (92%) followed by the IB Diploma curriculum (22%) and the Host country national curriculum (15%).

Subjects Taught

- Across all responding COBIS schools worldwide, 116 different subjects are taught.

- The most common subjects taught in responding schools are Mathematics, Computing/ICT and English Language.
- Some less common subjects taught in responding COBIS schools include Spanish, Wellbeing and Travel and Tourism.

Extra-Curricular Activities and Sports

- Across all responding COBIS schools worldwide, 174 different extra-curricular activities and sports are offered.
- The extra-curricular activities and sports most commonly offered across all responding COBIS schools are Art (91%), Football (88%) and Choir (87%).
- Some less common extra-curricular activities and sports offered include Punting, Zoology and Water Polo.

SEN Provision

- 86% of all responding COBIS schools offer SEN provision.

EAL Support

- 86% of all responding COBIS schools worldwide offer EAL support.

Gifted and Talented Support

- 73% of all responding COBIS schools worldwide offer Gifted and Talented support.

Bursaries and Scholarships

- 55% of responding COBIS schools offer some form of financial support; 31% offer bursaries and 51% offer scholarships.
- Across all responding schools, 40% offer academic scholarships, 10% offer sport scholarships, 13% offer Art/Music/Drama/Dance scholarships, and 16% offer other types of scholarship.
- From responding schools, the average total value of annual financial support available for bursaries/scholarships, is 80,125 GBP (£).

School Leavers and Future Destinations

- There were a total of 4744 leavers across all responding schools during the previous academic year.
- Of the 2355 school leavers from the 74 schools who provided destination data, 2241 (95%) in total went on to HE/University.
- Of these, 604 students (26%) went on to HE/University in the same country as the school and 1637 students (70%) to HE/University in other countries. 114 students (5%) went on to take a gap year.
- Leavers from responding COBIS schools went on to a wide variety of UK Universities. Some of the top destinations include Bath Spa University (62 students), University College London (UCL) (51 students), Exeter, University of (34 students), King's College London (33 students) and Edinburgh, University of (31 students).
- Of the 1637 students who went on to HE/University in other countries, the most popular destination, other than the UK is United States (241 students) followed by Canada (86 students) and Netherlands (36 students)

School Development – Networking and Collaboration

- Responding schools expressed an interest in networking and collaboration in areas relating to school improvement and development.
 - The most popular areas of interest are CPD, Administration and Assessment.

School Development – Future Plans

- The most common current areas of focus across all responding schools are Significant building works/new school site, Increase in pupil numbers/capacity and Implementation of new projects.

Assessments/Examinations offered

- The most common examinations taken in responding COBIS schools in the previous academic year were IGCSE (38% of schools), A-Level (24% of schools) and AS-Level (21% of schools).
- From responding schools, there were 764 Year 13 students examined on IB courses in the last academic year. 720 were full IB Diploma students.

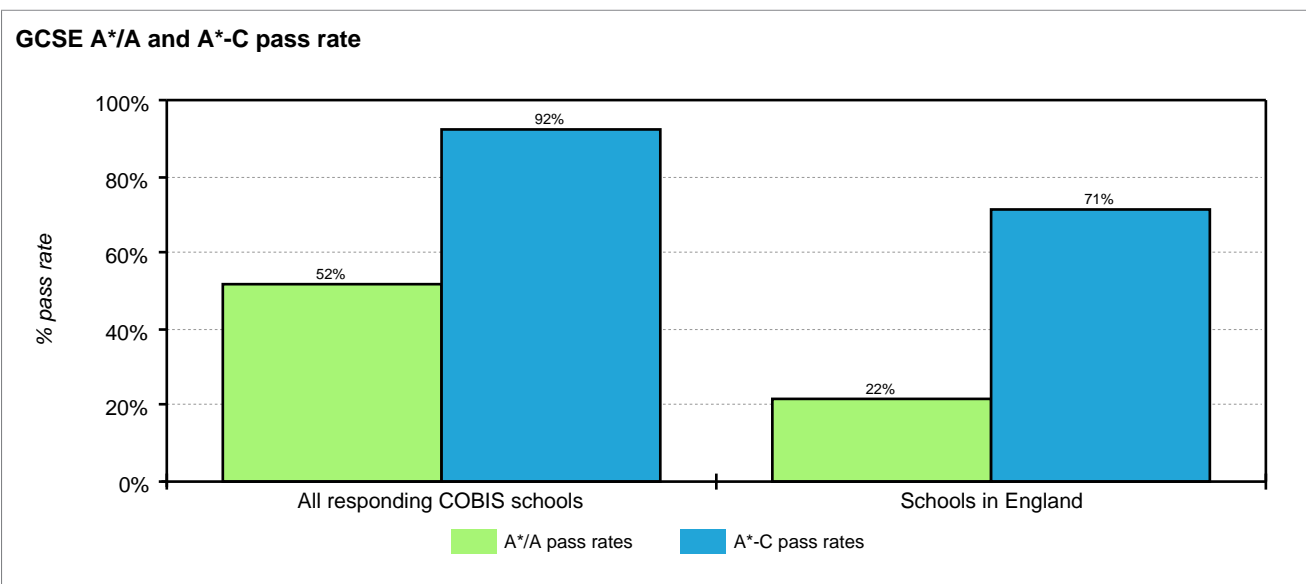
Awarding Bodies

- 50% of responding schools use AQA, 45% use CIE and 38% use Edexcel/Pearson.

GCSE Examination Results

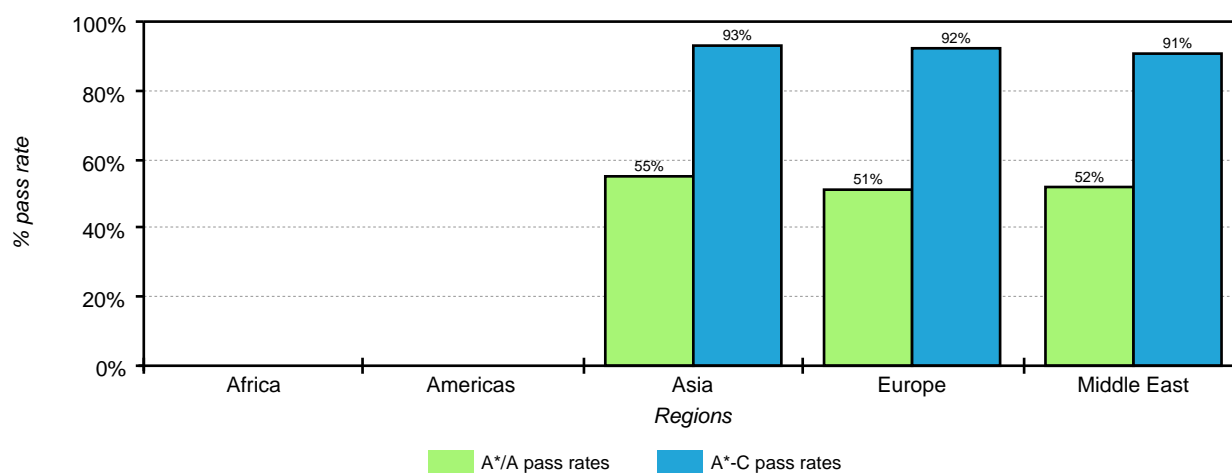
- The average A*/A pass rate of all responding COBIS schools was 52% and the A*-C pass rate was 92%.
- The average A*/A pass rate for all schools in England was 22.2% and the A*-C pass rate was 70.8%.

All data can be seen in the chart below.



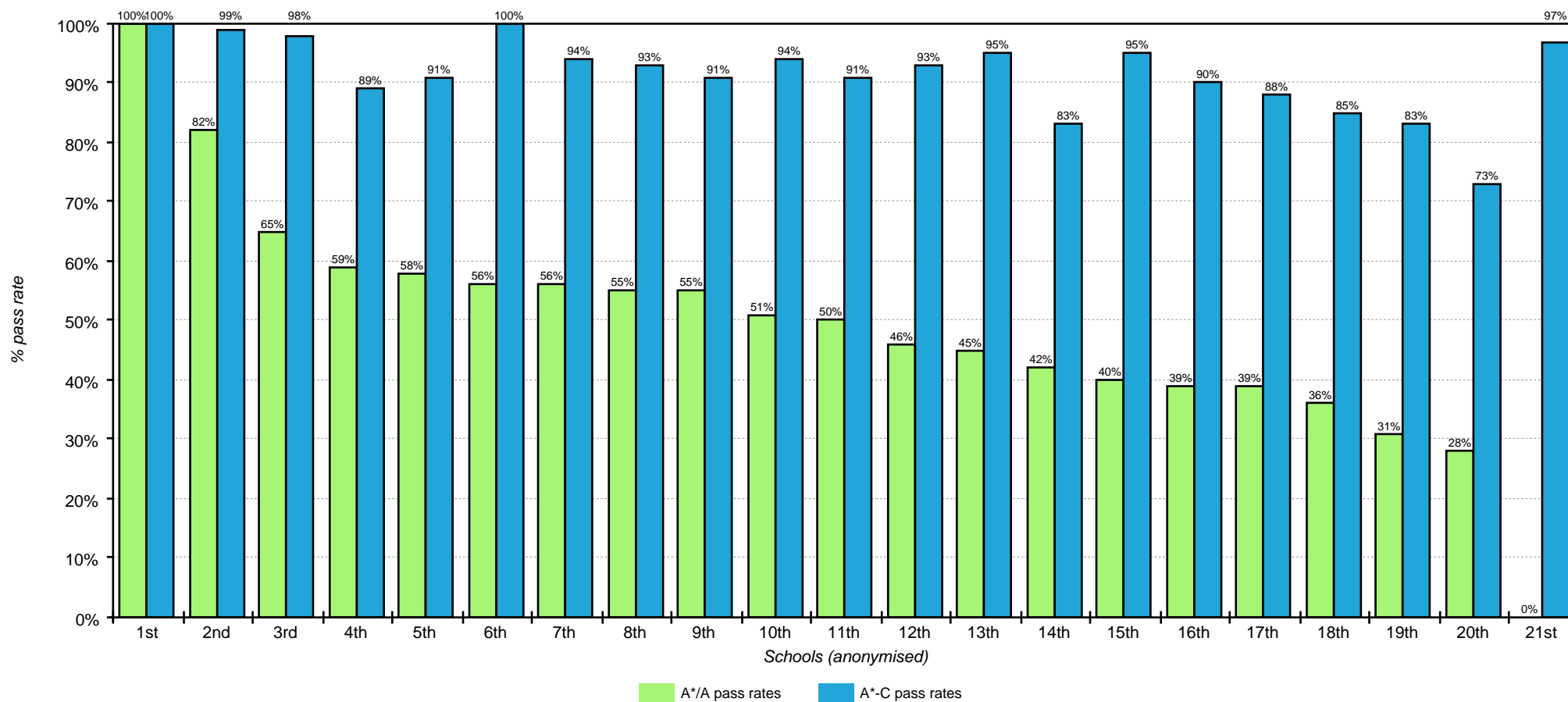
The average GCSE A*/A and A*-C pass rate of all responding schools can be seen below broken down by region.

GCSE A*/A and A*-C pass rate for all schools by region



The GCSE A*/A and A*-C pass rate for all individual responding schools (anonymised) who took the examination can be seen in the chart below.

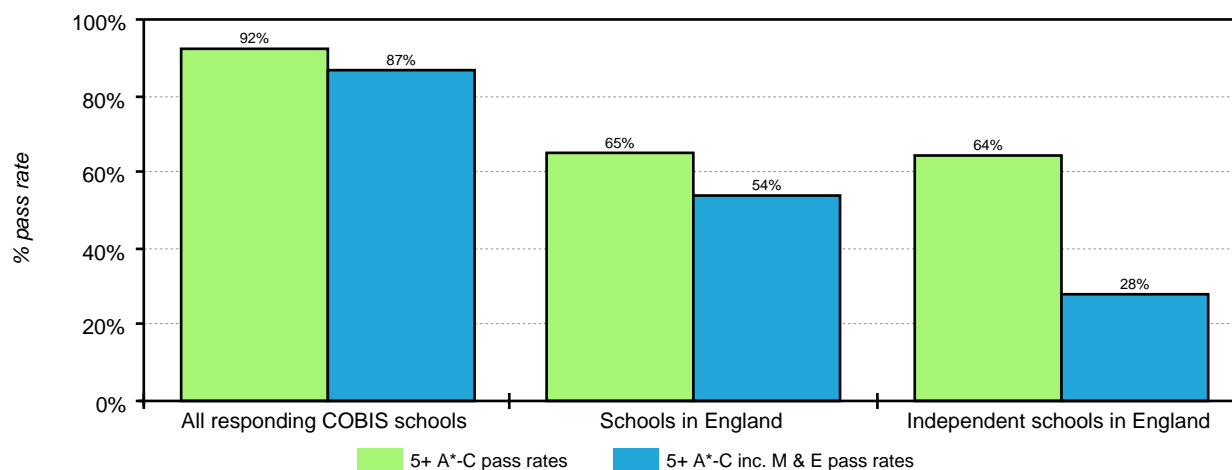
GCSE A*/A and A*-C pass rate for individual schools



- The average 5+ A*-C GCSE pass rate of all responding COBIS schools was 92% and the 5+ A*-C including maths and English pass rate was 87%.
- By comparison, the 5+ A*-C pass rate for all schools in England was 64.9% and the 5+ A*-C including maths and English pass rate was 53.8%. For independent schools in England the 5+ A*-C pass rate was 64.2% and the 5+ A*-C including maths and English pass rate was 27.7%.

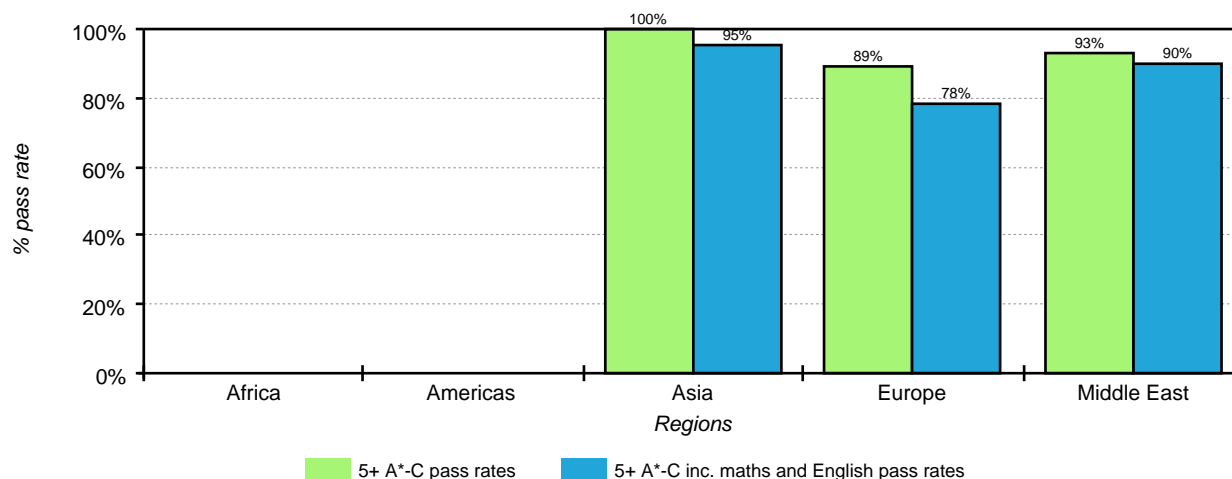
All data can be seen in the chart below.

GCSE 5+ A*-C and 5+ A*-C including maths and English pass rate



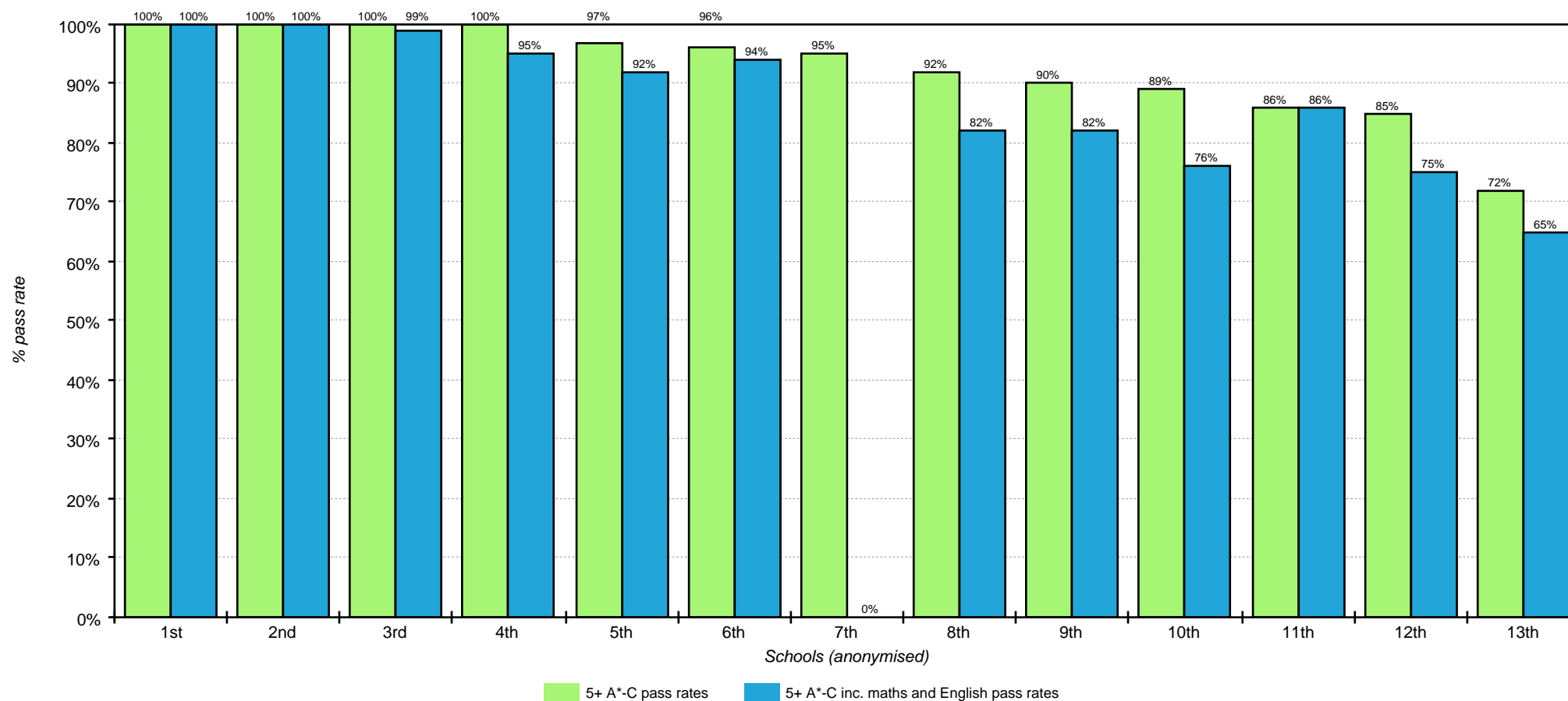
The average GCSE 5+ A*-C and 5+ A*-C including maths and English pass rate of all responding schools can be seen below broken down by region.

GCSE 5+ A*-C and 5+ A*-C including maths and English pass rate for all schools by region



The 5+ A*-C and 5+ A*-C inc. maths and English pass rates of all individual responding schools (anonymised) who took the examination can be seen in the chart below.

GCSE 5+ A*-C and 5+ A*-C inc. maths and English pass rate for individual schools



In performance tables, AS levels are counted as GCSE achievements.

Independent schools data does not include independent special schools.

GCSE and equivalent results in England, 2014 to 2015. National tables: SFR01_2016. Accessed November 2016 at: <https://www.gov.uk/government/statistics/revised-gcse-and-equivalent-results-in-england-2014-to-2015>

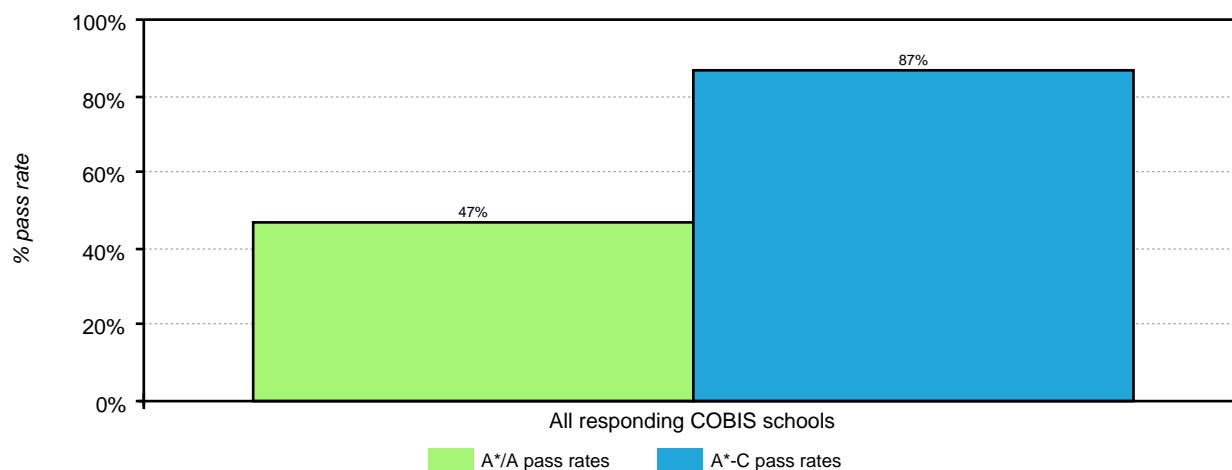
GCSE and equivalent results in England, 2014 to 2015. Subject time series tables: SFR01_2016. Accessed November 2016 at: <https://www.gov.uk/government/statistics/revised-gcse-and-equivalent-results-in-england-2014-to-2015>

IGCSE Examination Results

- The average A*/A pass rate of all responding COBIS schools was 47% and the A*-C pass rate was 87%.

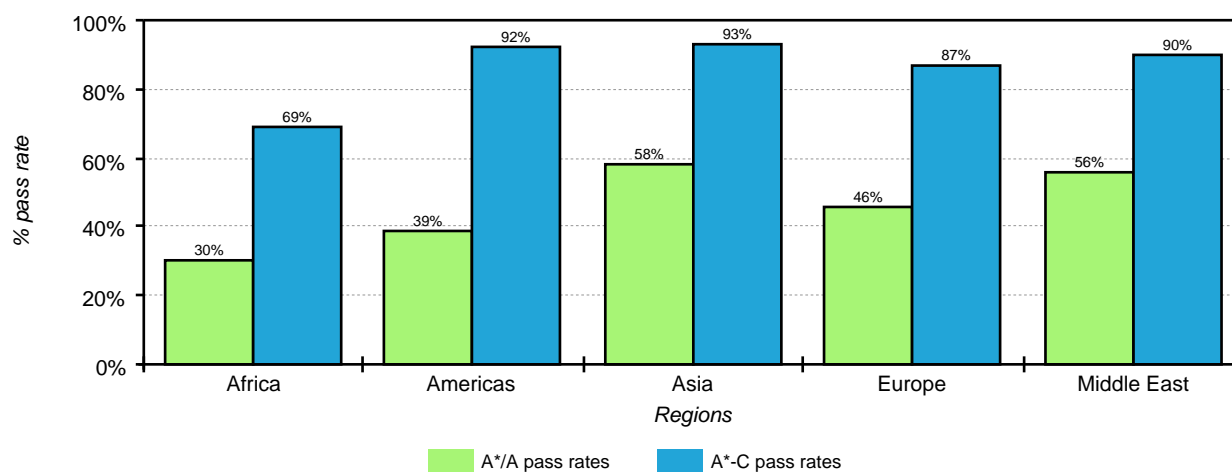
All data can be seen in the chart below.

IGCSE A*/A and A*-C pass rate



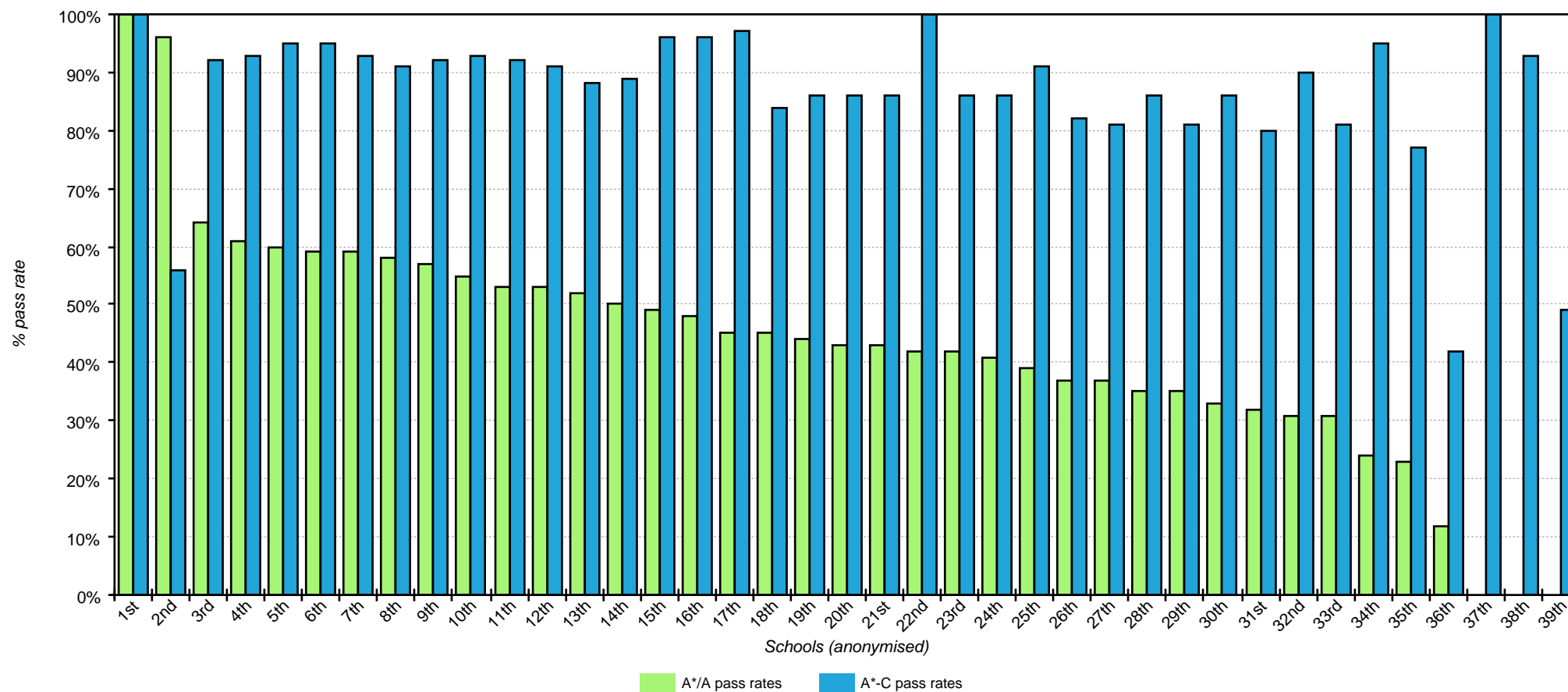
The average IGCSE A*/A and A*-C pass rate of all responding schools can be seen below broken down by region.

IGCSE A*/A and A*-C pass rate for all schools by region



The IGCSE A*/A and A*-C pass rate for all individual responding schools (anonymised) who took the examination can be seen in the chart below.

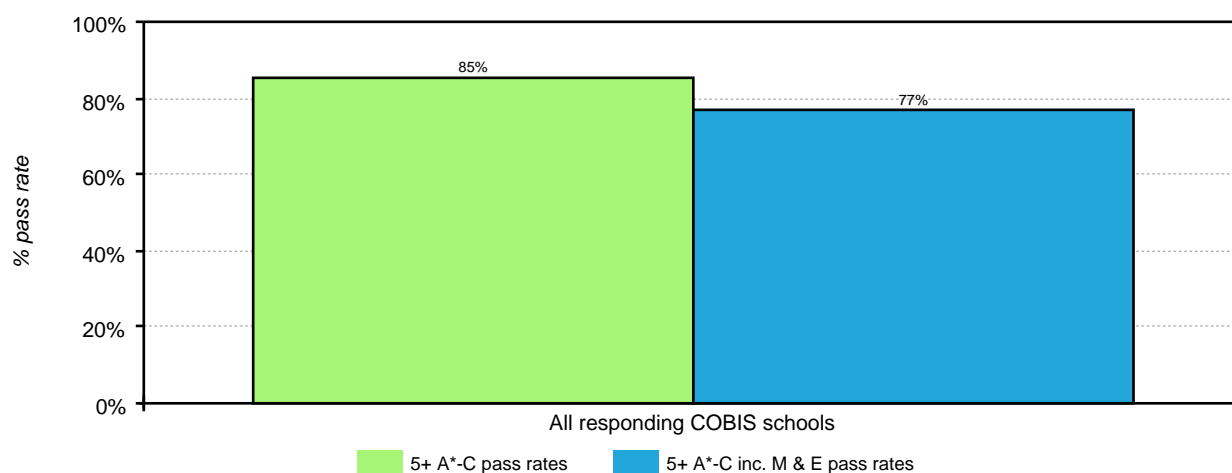
IGCSE A*/A and A*-C pass rate for individual schools



- The average 5+ A*-C IGCSE pass rate of all responding COBIS schools was 85% and the 5+ A*-C including maths and English pass rate was 77%.

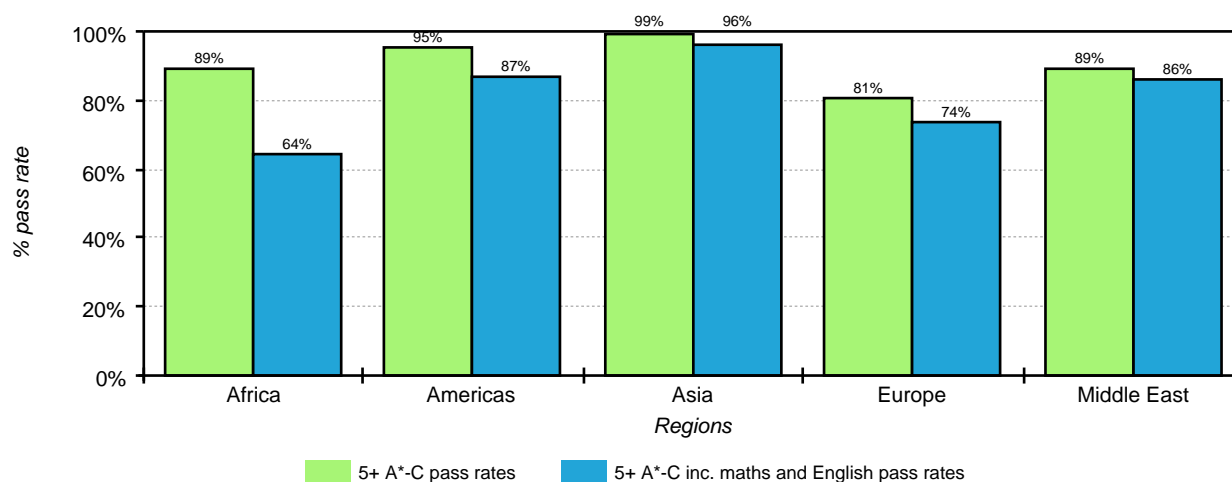
All data can be seen in the chart below.

IGCSE 5+ A*-C and 5+ A*-C including maths and English pass rate



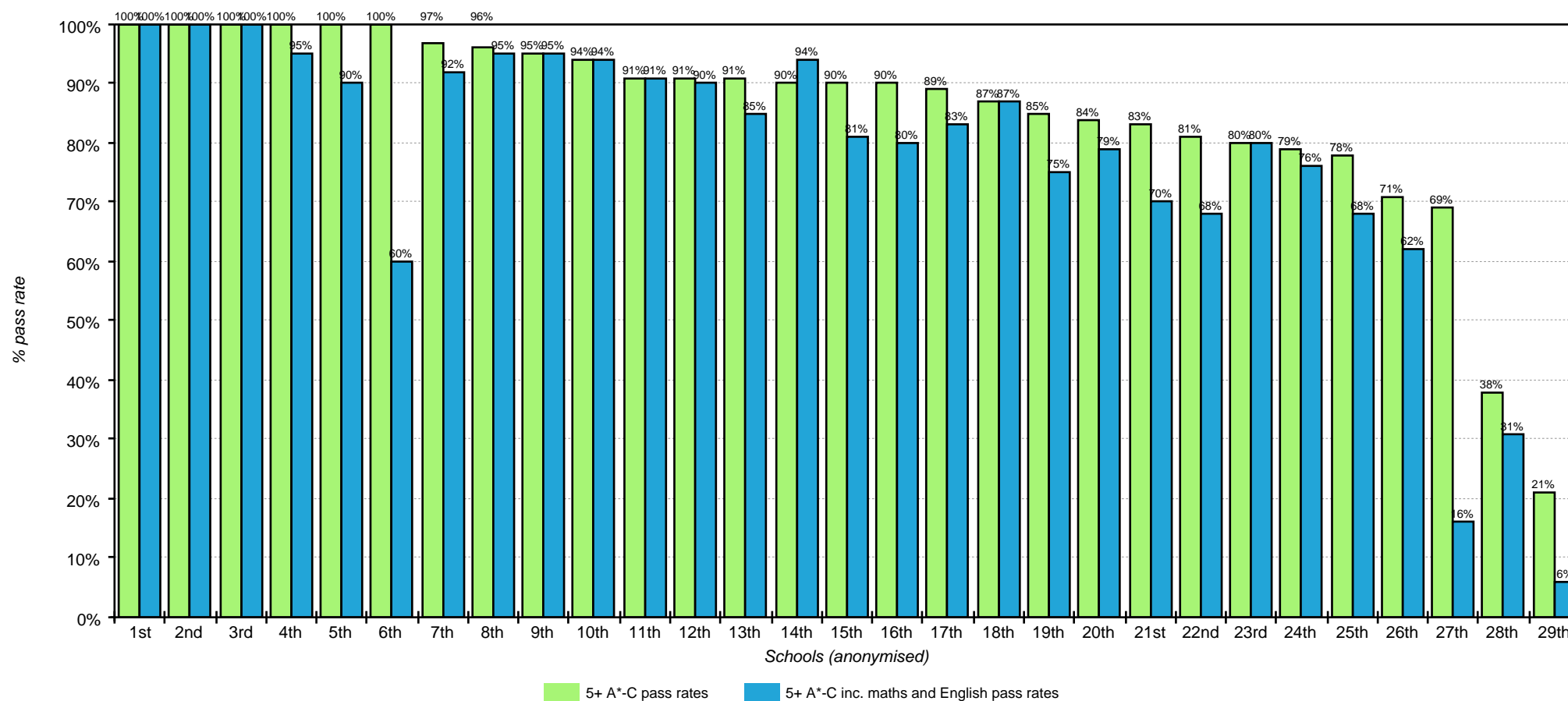
The average IGCSE 5+ A*-C and 5+ A*-C including maths and English pass rate of all responding schools can be seen below broken down by region.

IGCSE 5+ A*-C and 5+ A*-C including maths and English pass rate for all schools by region



The 5+ A*-C and 5+ A*-C inc. maths and English pass rates of all individual responding schools (anonymised) who took the examination can be seen in the chart below.

IGCSE 5+ A*-C and 5+ A*-C inc. maths and English pass rate for individual schools

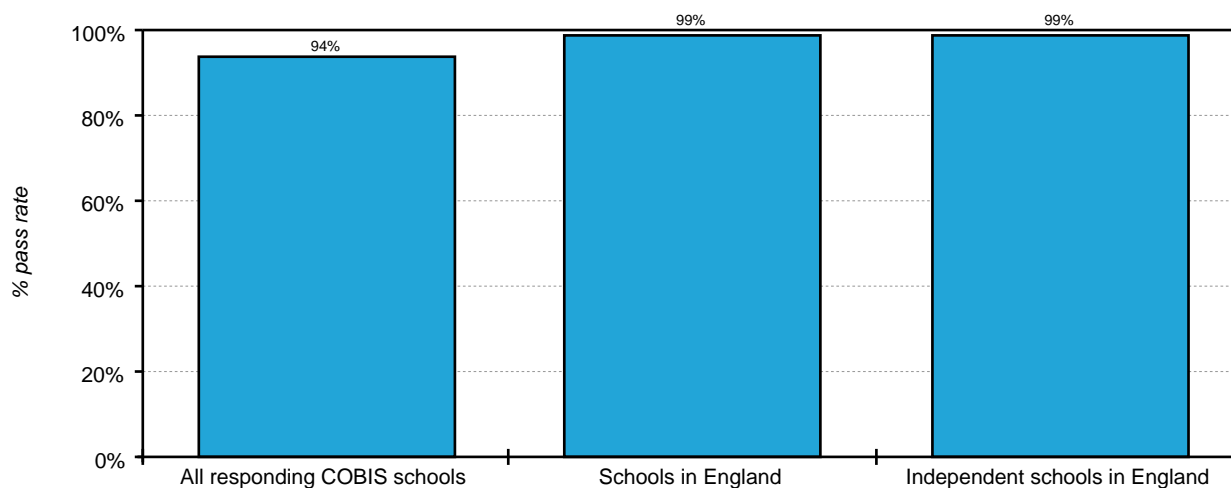


A Level Examination Results

- The average pass rate of all responding COBIS schools was 94%.
- The average pass rate for all schools in England was 98.7% and the average pass rate of independent schools in England was 99.3%.

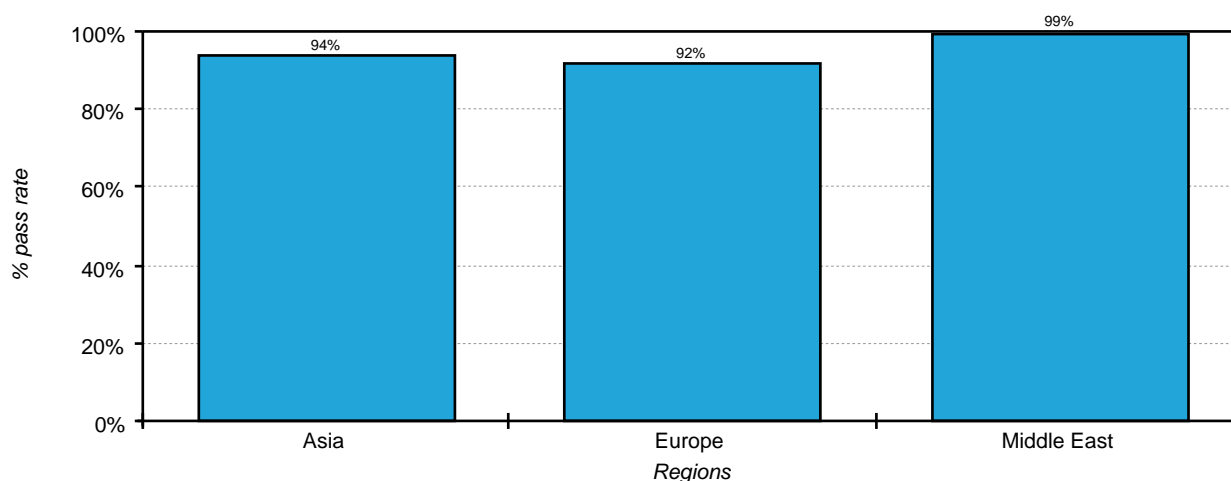
All data can be seen in the chart below.

A Level pass rate



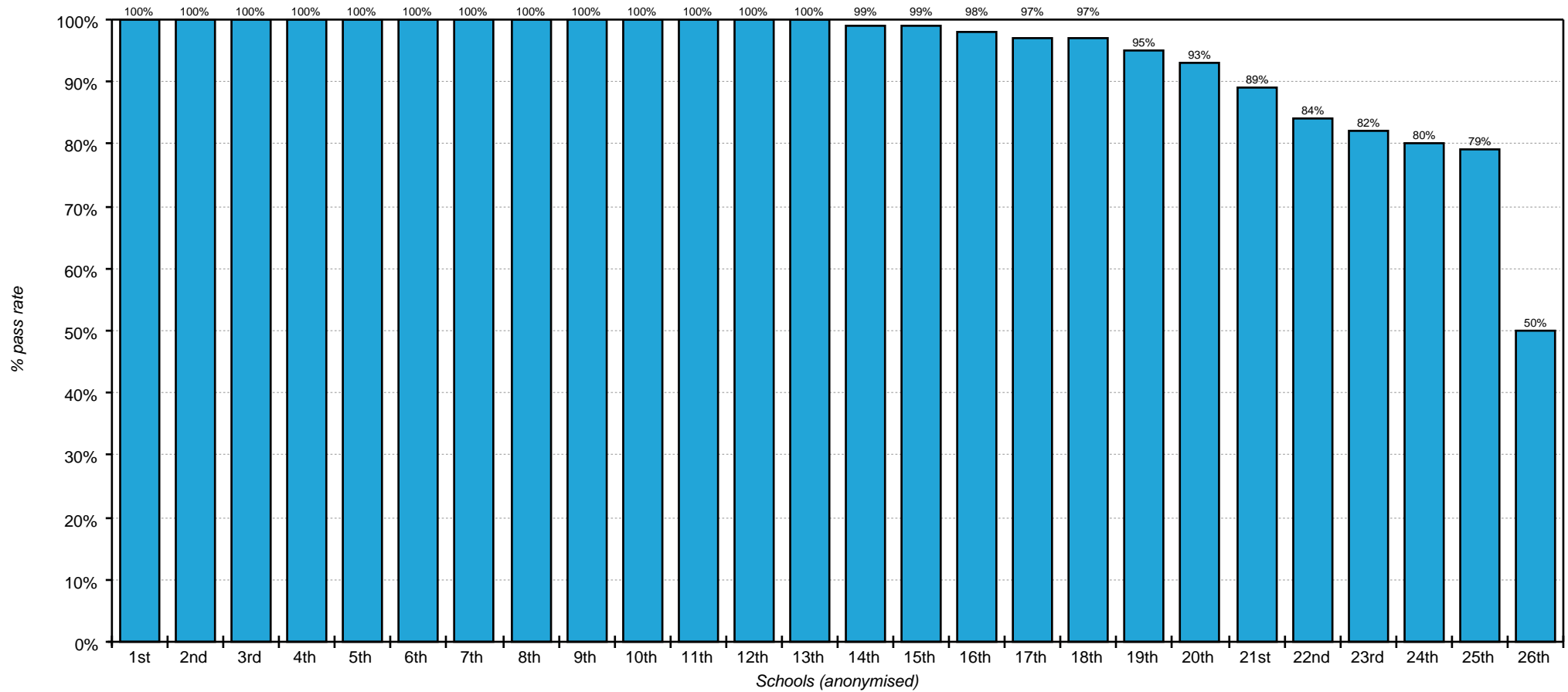
The average A Level pass rate of all responding schools can be seen below broken down by region.

A Level pass rate for all schools by region



The A Level pass rate for all individual responding schools (anonymised) who took the examination can be seen in the chart below.

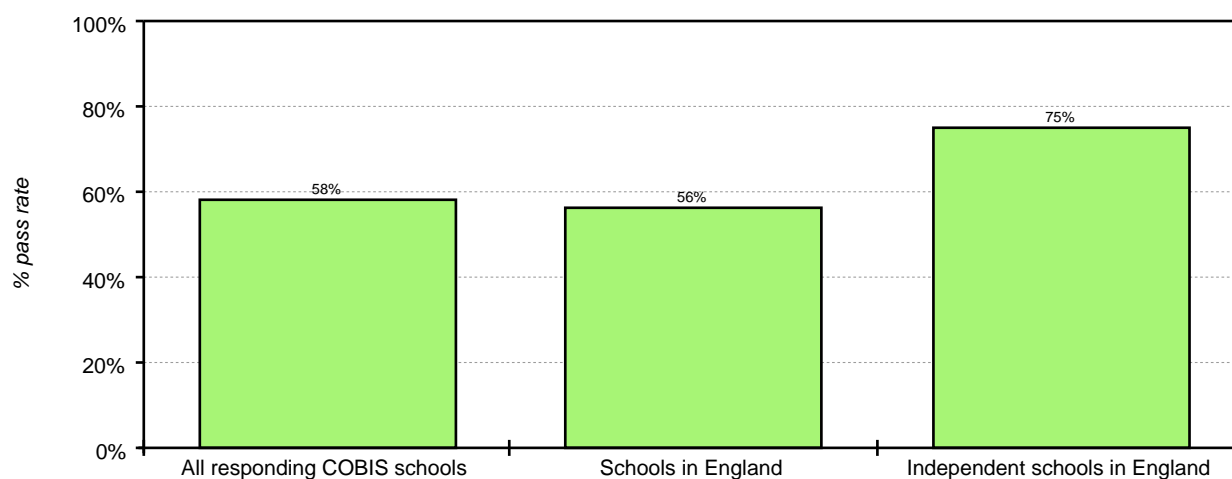
A Level pass rate for individual schools



- The average A/B pass rate of all responding COBIS schools was 58%.
- The average A/B pass rate for all schools in England was 56% and the average A/B pass rate of independent schools in England was 75.1%.

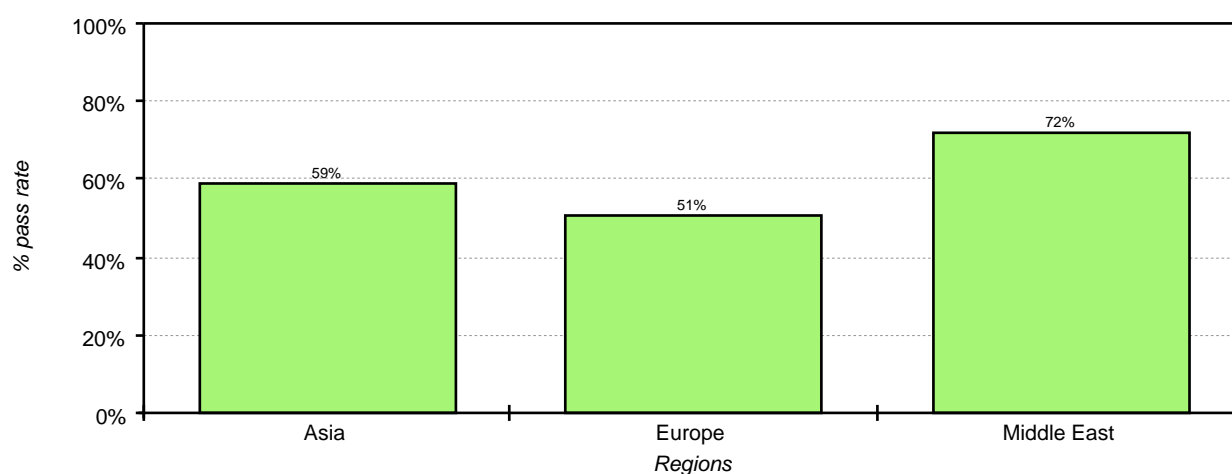
All data can be seen in the chart below.

A Level A/B pass rate



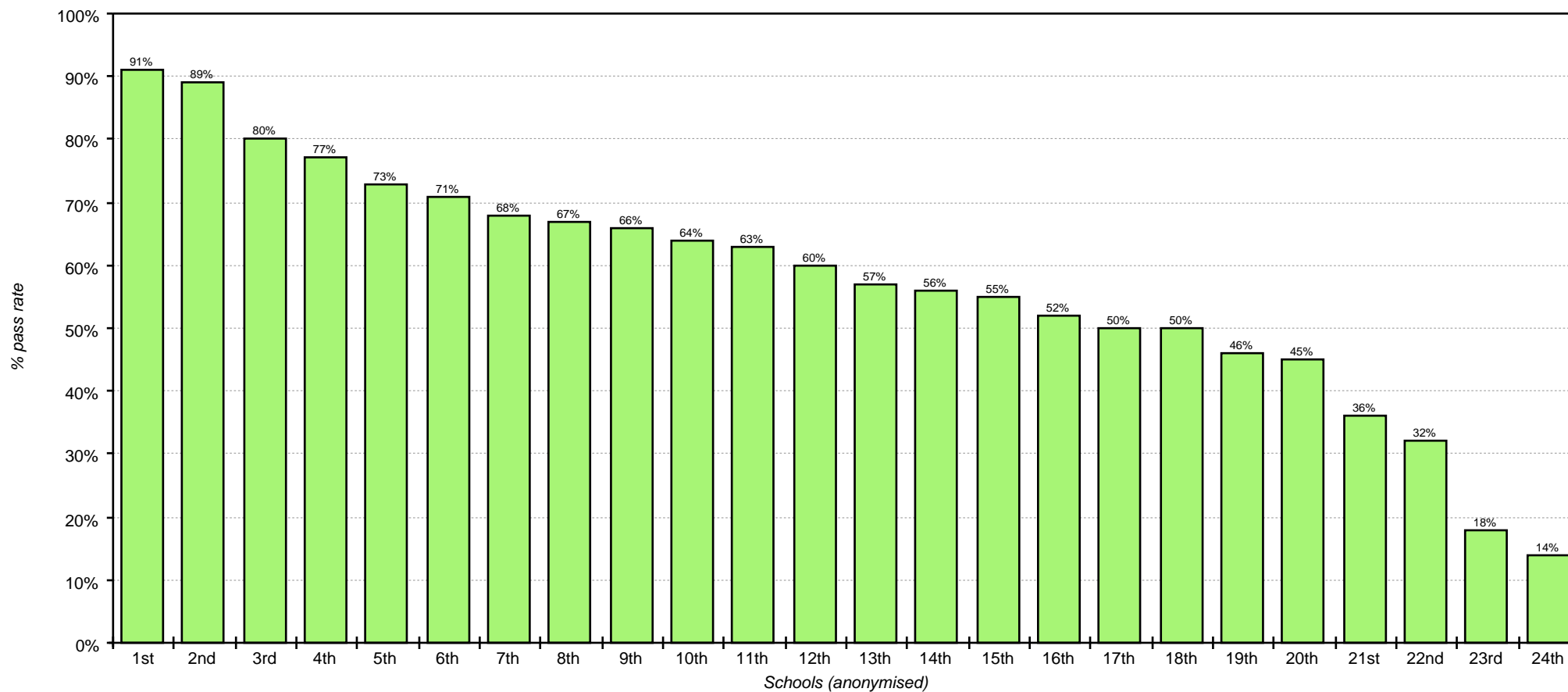
The average A Level A/B pass rate of all responding schools can be seen below broken down by region.

A Level A/B pass rate for all schools by region



The A Level A/B pass rate for all individual responding schools (anonymised) who took the examination can be seen in the chart below.

A Level A/B pass rate for individual schools



The data for schools in England covers A Level results for the 2014/15 academic year.

The independent schools in England figures cover independent special schools, independent schools approved to take pupils with special educational needs (SEN) and non-maintained special schools

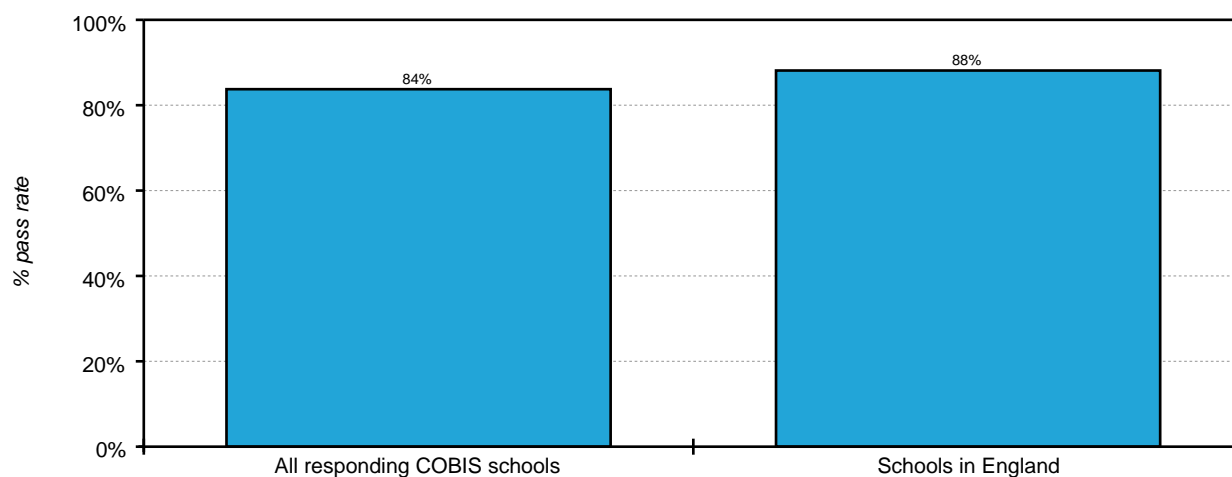
A Level and other level 3 results: academic year 2014 to 2015 (revised). National tables: SFR03/2016. Accessed November 2016 at: <https://www.gov.uk/government/statistics/a-level-and-other-level-3-results-2014-to-2015-revised>

AS Level Examination Results

- The average pass rate of all responding COBIS schools was 84%.
- The average pass rate for all schools in England was 87.5%.

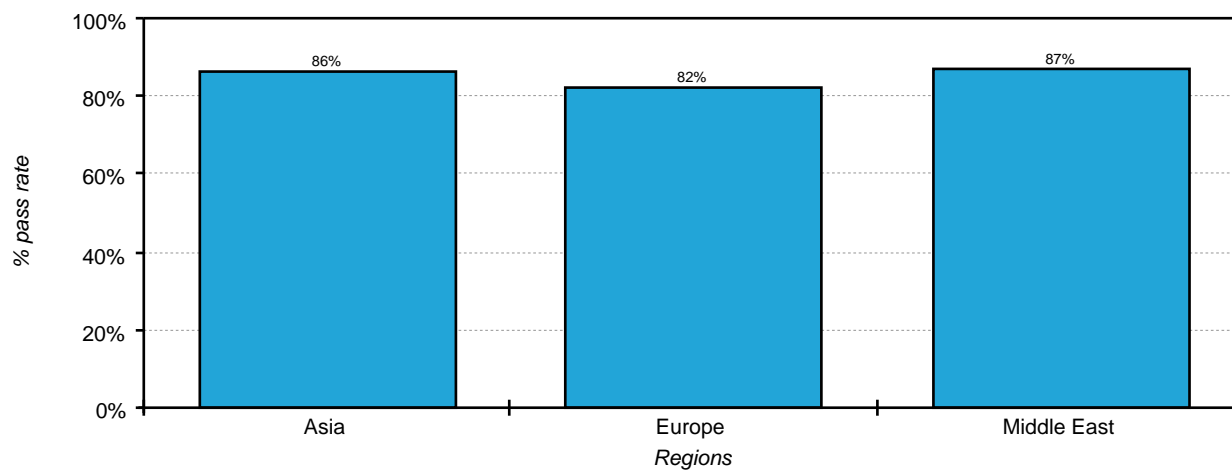
All data can be seen in the chart below.

AS Level pass rate



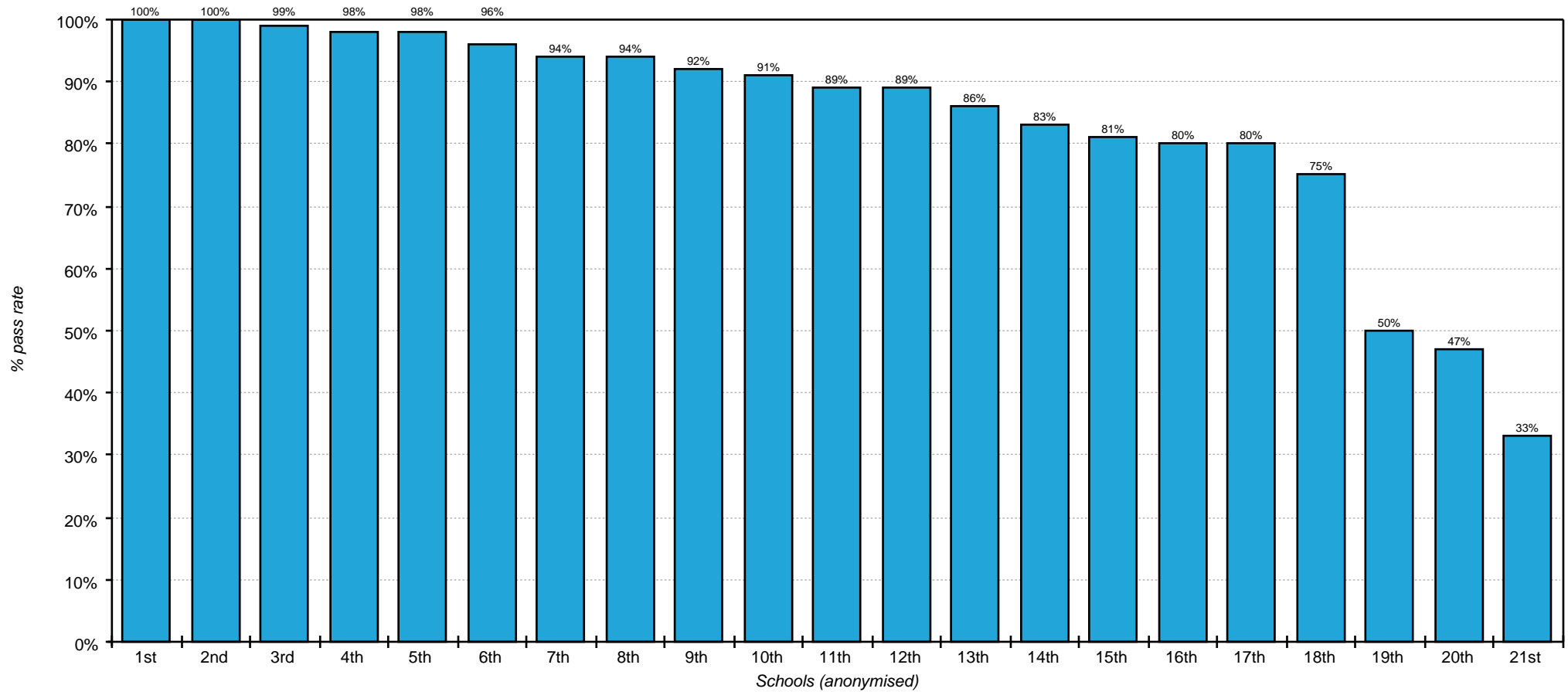
The average AS Level pass rate of all responding schools can be seen below broken down by region.

AS Level pass rate for all schools by region



The AS Level pass rate for all individual responding schools (anonymised) who took the examination can be seen in the chart below.

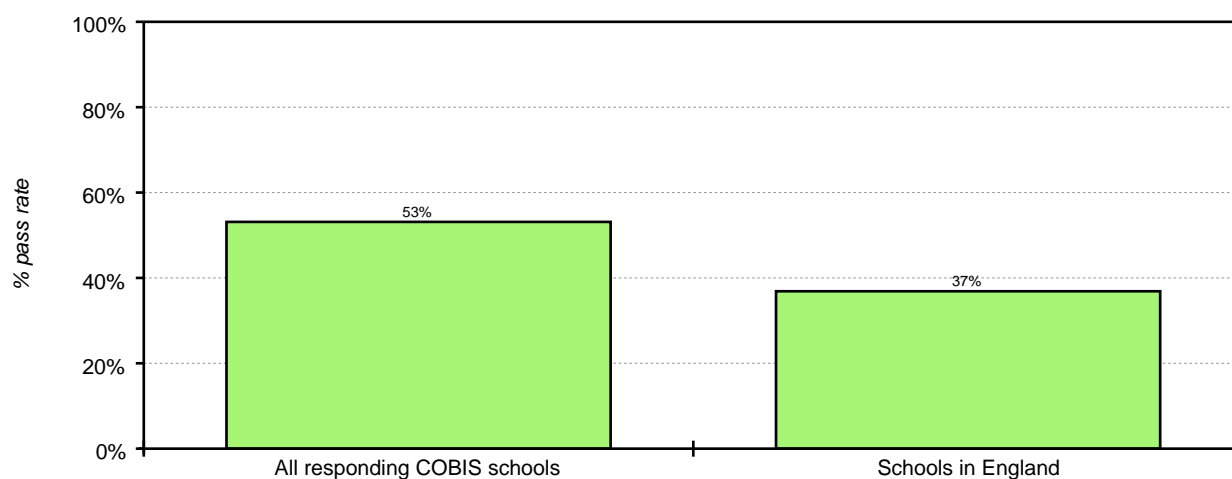
AS Level pass rate for individual schools



- The average A/B pass rate of all responding COBIS schools was 53%.
- The average A/B pass rate for all schools in England was 36.7%.

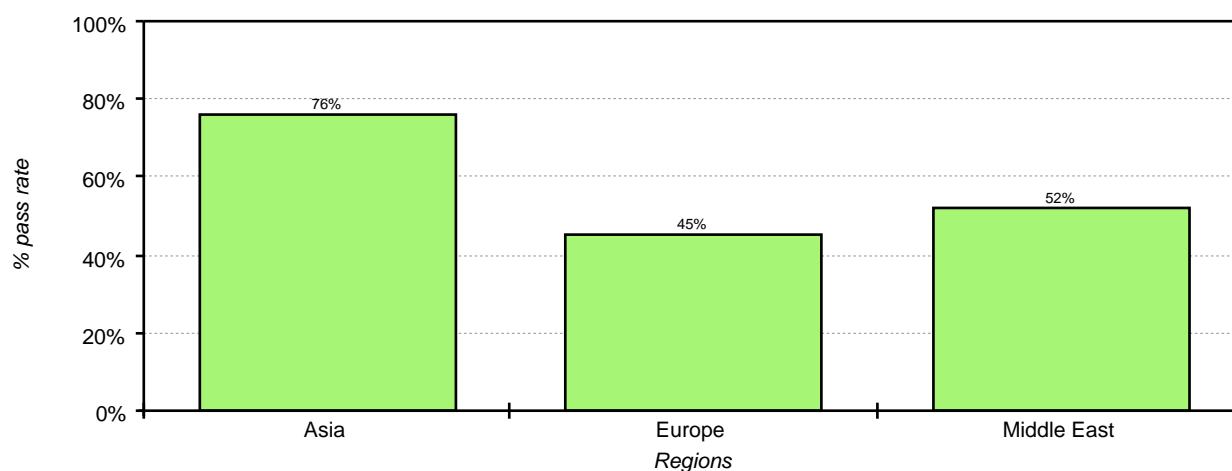
All data can be seen in the chart below.

AS Level A/B pass rate



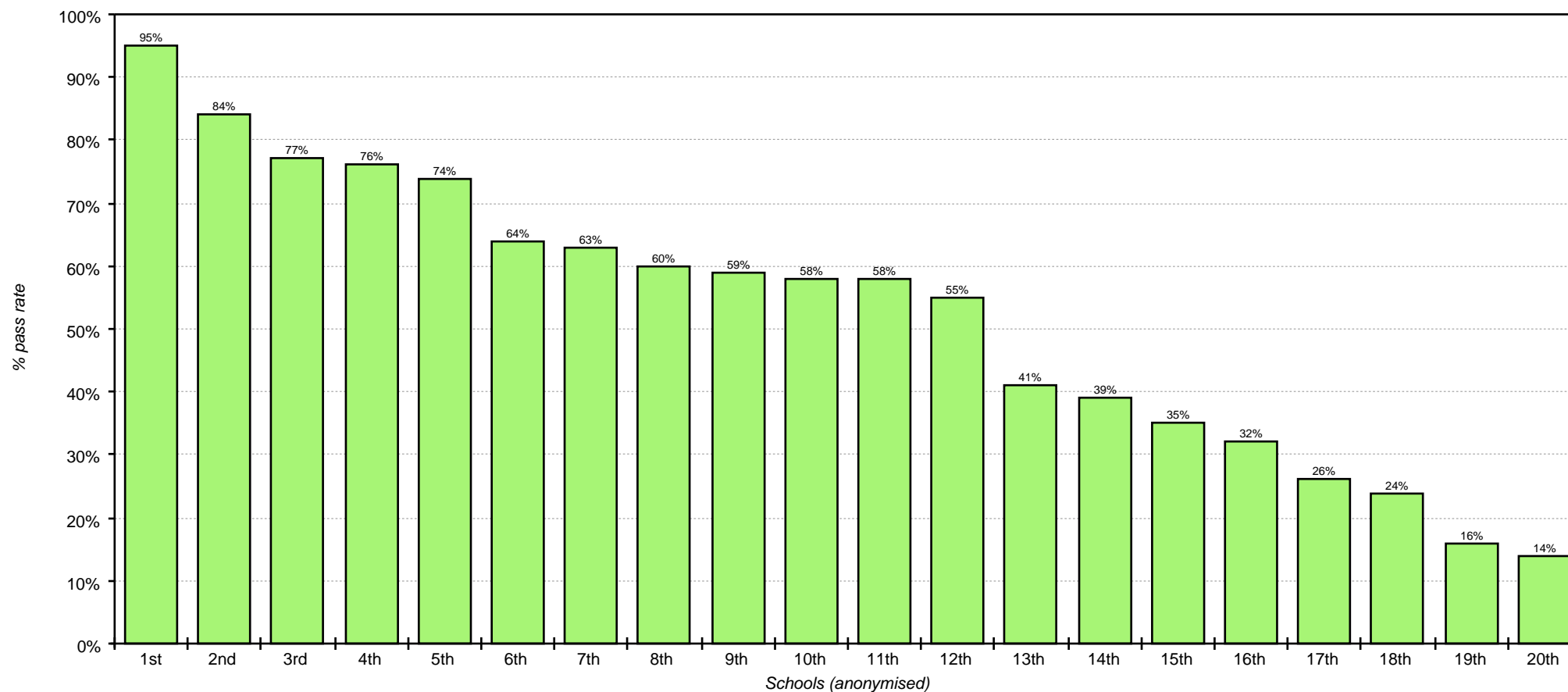
The average AS Level A/B pass rate of all responding schools can be seen below broken down by region.

AS Level A/B pass rate for all schools by region



The AS Level A/B pass rate for all individual responding schools (anonymised) who took the examination can be seen in the chart below.

AS Level A/B pass rate for individual schools



The data for schools in England covers AS Level results for the 2014/15 academic year.

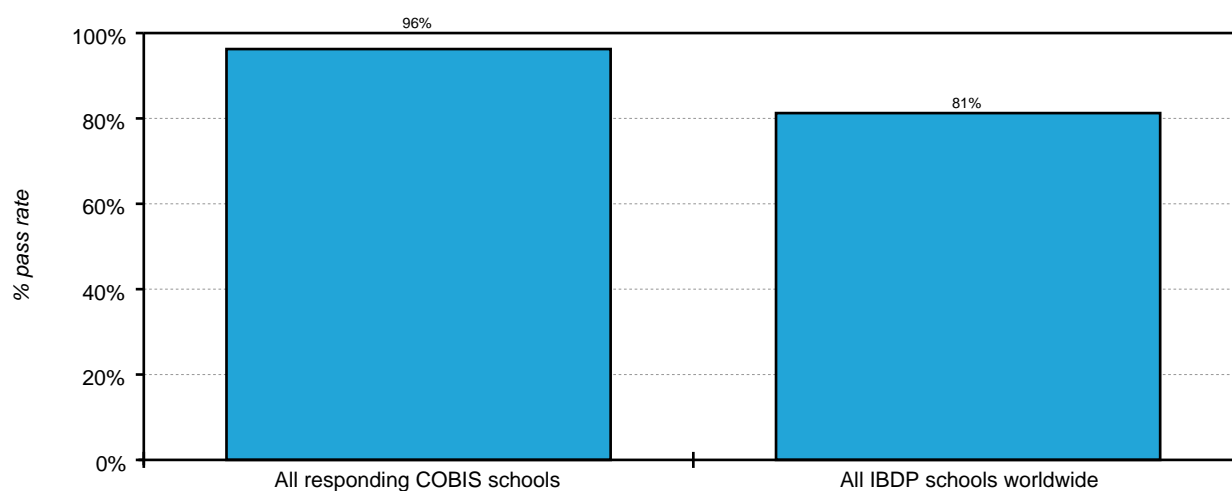
AS Level and other level 3 results: academic year 2014 to 2015 (revised). National tables: SFR03/2016. Accessed November 2016 at: <https://www.gov.uk/government/statistics/a-level-and-other-level-3-results-2014-to-2015-revised>

IB Diploma Examination Results

- The pass rate for responding COBIS schools was 96 and the average score 33.8.
- 13% of students passed the IB Diploma with a score of 40 points or more.
- The average pass rate for all schools taking the IB Diploma worldwide was 80.8%.

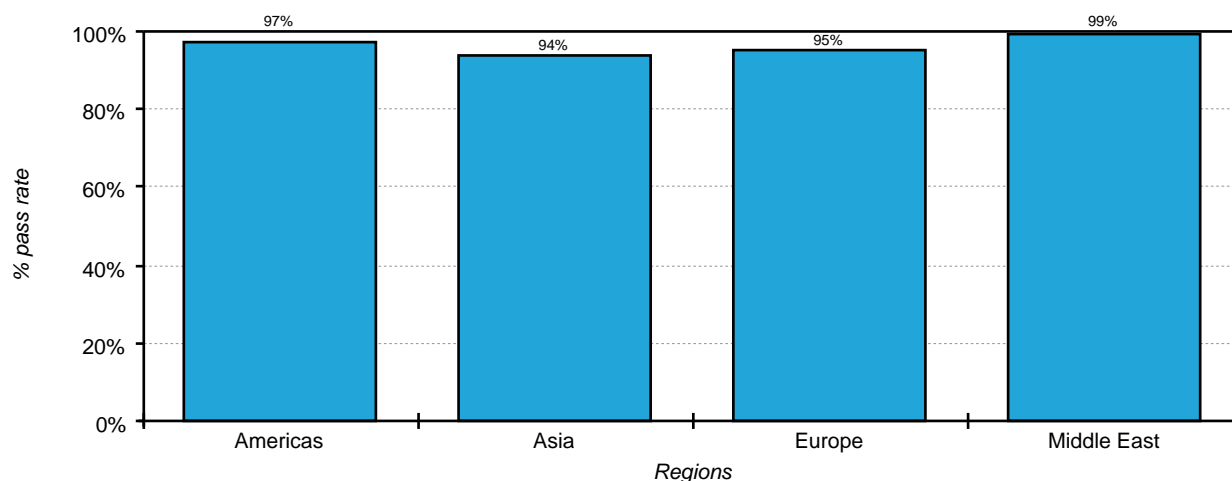
All data can be seen in the chart below.

IB Diploma pass rate



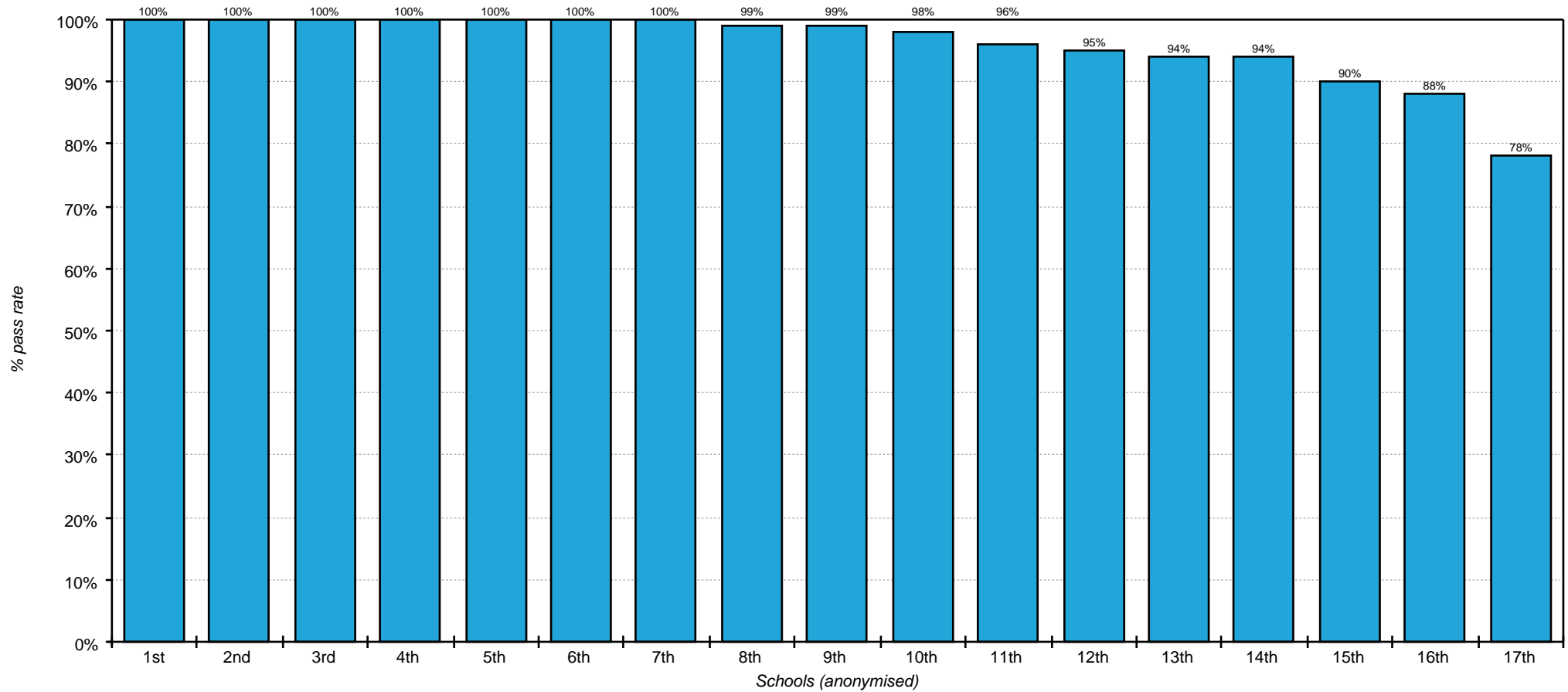
The average IB Diploma pass rate of all responding schools can be seen below broken down by region.

IB Diploma pass rate for all schools by region



The IB Diploma pass rate for all individual responding schools (anonymised) who took the examination can be seen in the chart below.

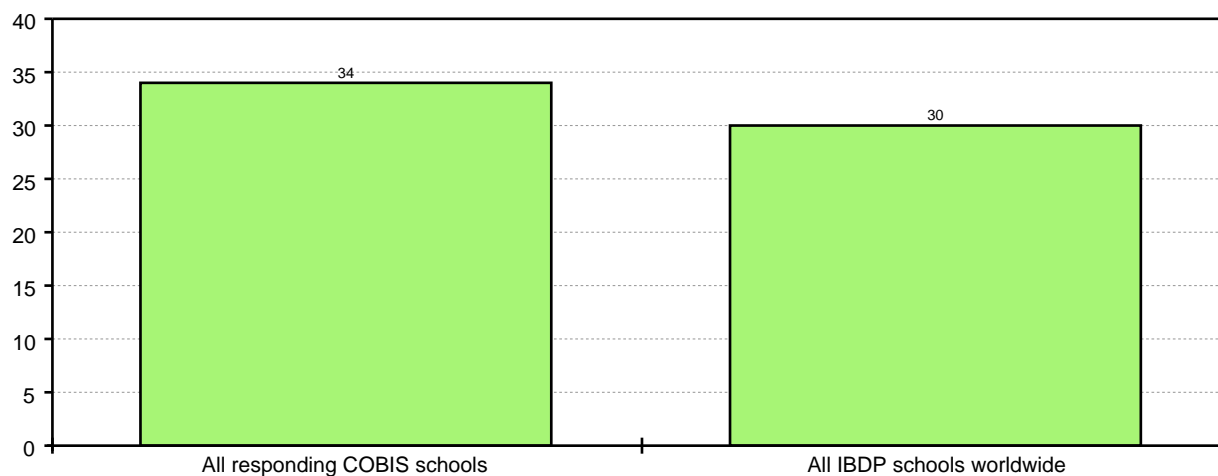
IB Diploma pass rate for individual schools



- The average points total of responding COBIS schools was 33.8.
- The average points total for all schools taking the IB Diploma worldwide was 30.2.

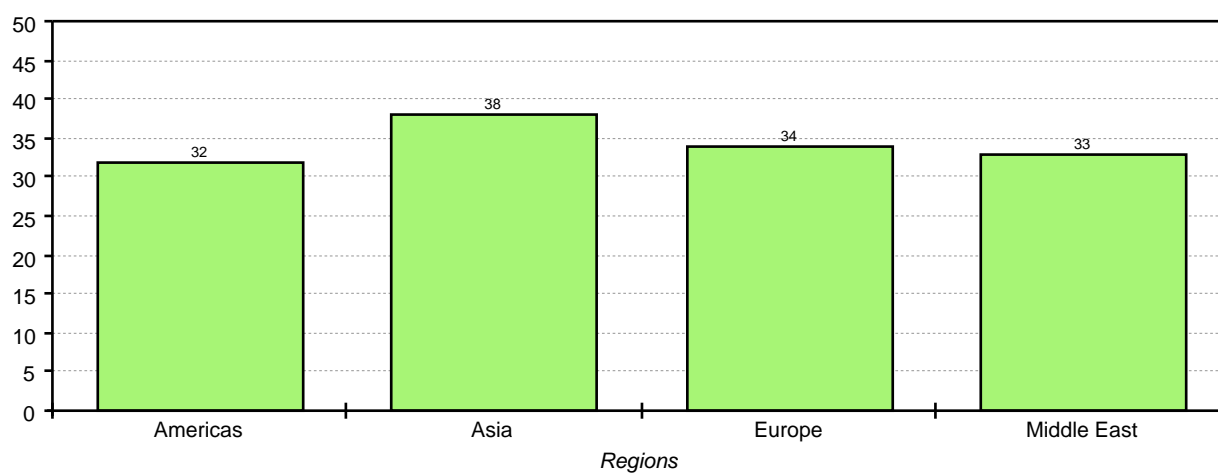
All data can be seen in the chart below.

IB Diploma average points total



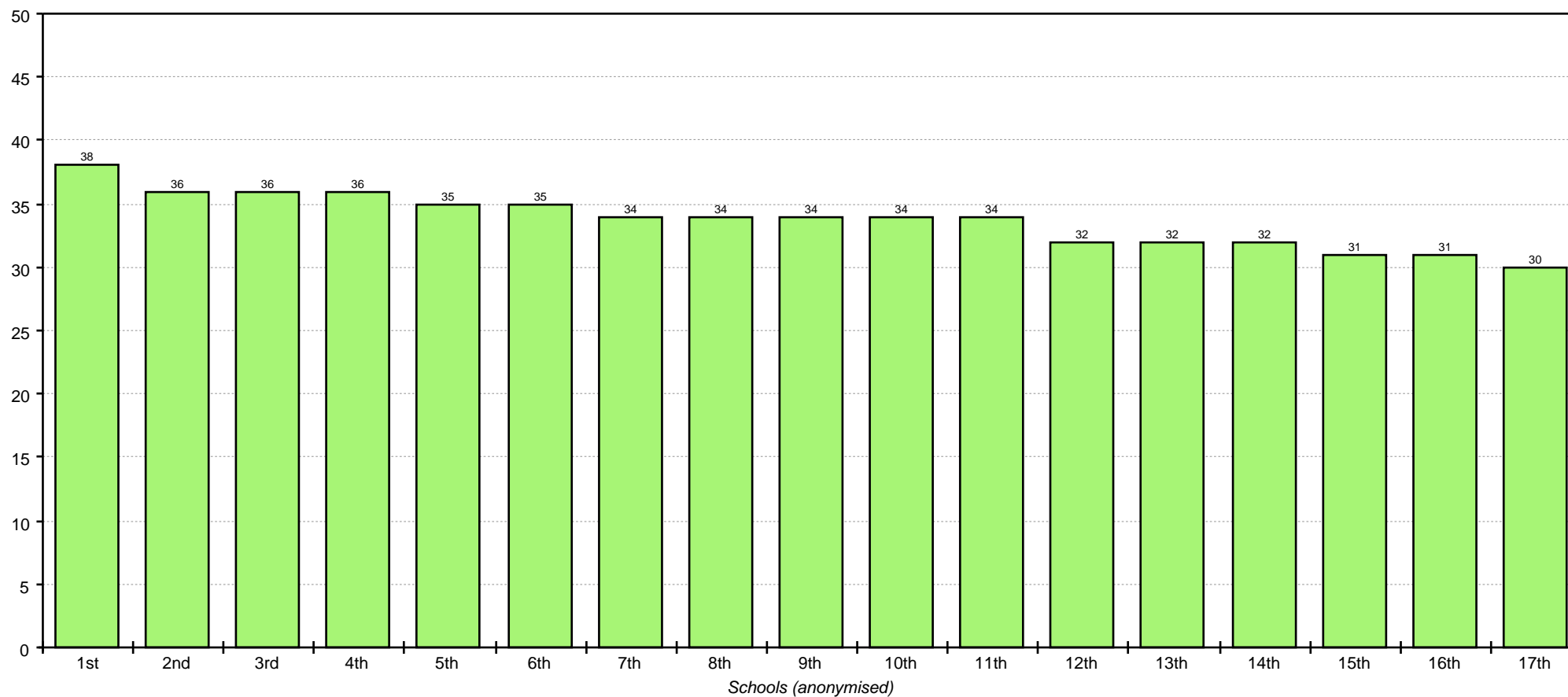
The average points total of all responding schools can be seen below broken down by region.

IB Diploma average points total by region



The average points total for all individual responding schools (anonymised) who took the examination can be seen in the chart below.

IB Diploma average points total for individual schools



Data for all IB Diploma candidates is provided for comparison. Statistical bulletins are produced following each Diploma Programme examination session. The IB Diploma Statistical Bulletin, May 2015 Examination Session (2015). Accessed November 2016 at: <http://www.ibo.org/contentassets/bc850970f4e54b87828f83c7976a4db6/dp-2015-may-stats-bulletin.pdf>