



COBIS Annual Research Survey 2015 School Data Summary Report

In case of enquiries please contact COBIS by emailing cpd@cobis.org.uk.
Copyright © 2015 GL Education Ltd.





We are delighted to be working with COBIS once again to produce the 2016 Annual Research Survey.

We work to provide schools with assessments to help teachers and senior leaders deliver whole school improvement, realise every student's potential and engage effectively with their stakeholders.

Our assessments of attainment, attitude and ability give teachers a 'whole pupil' view which helps them to develop students into confident and happy learners who succeed at school



www.gl-education.com

COBIS Annual Research Survey 2015

This report details the findings of the COBIS Annual Research Survey, conducted in 2015, in partnership with GL Education. This new research project was undertaken to help develop a better understanding of the growing global COBIS family of schools, as well as the British International Education sector as a whole. The results are supporting lobbying activities, informing planning for future CPD events, and helping facilitate increased school-to-school networking, communication and support.

COBIS represents more than 200 high-quality British International Schools in more than 60 countries worldwide. These schools educate c.100,000 pupils and employ more than 12,000 teachers and support staff.

The Annual Research Survey was carried out between 5 October 2015 and 6 November 2015. 99 schools responded to the survey. The following report provides a summary of the findings. All data presented represents responding schools unless otherwise specified. The Research Survey was supported with data from ISC Research Ltd.

Membership Category

There are 3 levels of membership in the COBIS Membership Framework. These membership levels respond to the diversity of the sector.

COBIS Accredited Members have undergone a successful British Schools Overseas (BSO) inspection. COBIS Members have satisfied the COBIS Board of their quality and commitment to a future BSO inspection. COBIS Candidate Schools are new schools or those soon to open, which are working towards COBIS Member status.

- 30% of COBIS schools are Accredited Members, 64% are Members and 6% are Candidate Schools.

Geographic Location

There are currently 237 COBIS schools worldwide, located in 70 countries. For the purpose of reporting and high-level analysis, COBIS schools are grouped into five geographical regions: Africa, Americas, Asia, Europe and the Middle East.



Number of COBIS schools by country

Country	Number of COBIS schools
Azerbaijan	2
Belgium	4
Bermuda	1
Brazil	2
Brunei	1
Bulgaria	3
China	7
Croatia	2
Czech Republic	10
Denmark	1
Egypt	6
France	2
Georgia	2
Germany	2
Greece	3
Hong Kong	1
Hungary	2
India	2
Indonesia	1
Italy	6
Japan	2
Kazakhstan	2
Kenya	6
Kuwait	3
Kyrgyzstan	1
Libya	1
Luxembourg	1
Malawi	2
Malaysia	9
Mauritius	1
Mexico	1
Mongolia	2
Montenegro	1
Morocco	1
Myanmar	1

Country	Number of COBIS schools
Nepal	1
Netherlands	2
Nigeria	41
Norway	2
Pakistan	1
Panama	1
Philippines	1
Poland	7
Portugal	3
Qatar	5
Romania	10
Russia	4
Saudi Arabia	1
Serbia	2
Slovakia	1
Slovenia	1
South Atlantic Ocean	1
Spain	12
Sultanate of Oman	1
Sweden	1
Switzerland	6
Tanzania	1
Thailand	1
Tunisia	1
Turkey	4
UK	5
USA	5
Uganda	1
Ukraine	1
United Arab Emirates	10
United Kingdom	2
Uzbekistan	1
Venezuela	1
Vietnam	2
Zambia	4

Number of School Sites

- Some COBIS schools are based on more than one site or campus. The different sites may cater for different age groups, or different catchment areas. Of the responding schools, 72% have a single site whilst the remaining 28% have multiple sites.

Founding Date

- Of the responding schools, the earliest was founded in 1896.

School Phases

- The most common phase taught in all responding COBIS schools is Primary.
 - 19% of responding schools teach Pre-school
 - 84% of responding schools teach EYFS
 - 91% of responding schools teach Primary
 - 82% of responding schools teach Middle
 - 75% of responding schools teach Secondary
 - 61% of responding schools teach Sixth Form
- 67% of responding schools teach cross-phase. The most common cross-phase taught is EYFS to Sixth form (37% of schools).

Age Range

- The most common age taught in responding schools is 11.
- The average minimum age taught in responding schools is 3.74.
- The average maximum age taught in responding schools is 16.20.

Pupil Numbers

- The average number of pupils in all responding schools is 617.
- Whole school pupil numbers across all responding schools range from 13 to 4130.
- Overall, in the past five years pupil numbers in 82% of schools have increased, 7% of schools have seen a decrease in pupil numbers whilst in 11% of schools, pupil numbers have remained roughly the same.

Pupil Backgrounds

- Within the responding schools, the number of nationalities within any individual school ranges from 1 to 99.
- The average for students in responding COBIS schools that do not have English as a mother tongue was 58%.

Boarding

- 12% of responding COBIS schools offer boarding.
- The number of boarders in any one school ranges from 18 to 552.

Teacher Numbers

- The total number of teachers across all responding COBIS schools is 6282.
- Whole school teacher numbers of all responding schools range from 7 to 301.
- It is helpful to review this data by school size and by region.
 - Schools with pupil numbers in the range 1901 to 4130 have the highest ratio of teachers to pupils, whilst schools with pupil numbers in the range 13 to 52 have the lowest.
 - Schools in the Middle East region have the highest ratio of teachers to pupils, whilst schools in the Americas region have the lowest.

Teaching Assistant Numbers

- The total number of teaching assistants across all responding COBIS schools is 1985.
- Whole school teaching assistant numbers of all responding schools range from 0 to 161.
- It is helpful to review this data by school size and by region.
 - Schools with pupil numbers in the range 1901 to 4130 have the highest ratio of teaching assistants to pupils, whilst schools with pupil numbers in the range 13 to 52 have the lowest.
 - Schools in the Europe region have the highest ratio of teaching assistants to pupils, whilst schools in the Americas region have the lowest.

Other Staff Numbers

- The total number of other staff members across all responding COBIS schools is 4398.
- Whole school other staff member numbers of all responding schools range from 1 to 250.

Annual Fees

- Annual fees in responding COBIS schools at the point of report generation range from 276 to 53,493 GBP (£). Local currencies were converted to GBP using current rates at the point of report generation.

Source of Pupil Entry

- The main source of pupil entry at responding COBIS schools worldwide is international families (46% of schools).
- Following the main source of entry, other significant sources of pupil entry across all responding schools are International families (46 schools), Local families (45 schools), Specific companies/employers (31 schools) and Feeder schools (22 schools).

Curriculum Followed

- The most common curriculum taught by responding COBIS schools worldwide is the UK curriculum (98%) followed by the Host country national curriculum (21%) and the IPC curriculum (14%)

Subjects Taught

- Across all responding COBIS schools worldwide, 108 different subjects are taught.

- The most common subjects taught in responding schools are Mathematics (94%), Geography (92%) and English Language (91%).
- Some less common subjects taught in responding COBIS schools include Wellbeing, Travel & Tourism and Theory of Knowledge.

Extra-Curricular Activities and Sports

- Across all responding COBIS schools worldwide, 153 different extra-curricular activities and sports are offered.
- The extra-curricular activities and sports most commonly offered across all responding COBIS schools are Art (88%), Football (88%) and Drama/Theatre Studies (80%).
- Some less common extra-curricular activities and sports offered include Zoology, Water Polo and Volunteering Club,.

SEN Provision

- 78% of all responding COBIS schools offer SEN provision.

EAL Support

- 88% of all responding COBIS schools worldwide offer EAL support.

Gifted and Talented Support

- 67% of all responding COBIS schools worldwide offer Gifted and Talented support.

Bursaries and Scholarships

- 54% of responding COBIS schools offer some form of financial support; 32% offer bursaries and 48% offer scholarships.
- Across all responding schools, 40% offer academic scholarships, 10% offer sport scholarships, 10% offer Art/Music/Drama/Dance scholarships, and 14% offer other types of scholarship.
- From responding schools, the average total value of annual financial support available for bursaries/scholarships, is 90,139 GBP (£).

British Schools Overseas (BSO) Inspections

BSO inspections are inspections by one of the inspectorates approved by the UK Department for Education, following the BSO standards and framework published on the DfE website.

- Of the responding schools, 45% have had a BSO inspection at some point, whilst the remaining 55% have not.
- The inspectorate used most frequently across all responding schools is Independent Schools Inspectorate (ISI).
- 37% of responding schools have a BSO inspection planned for the future.

School Leavers and Future Destinations

- There were a total of 3445 leavers across all responding schools during the previous academic year.

- Of the 2215 school leavers from the 78 schools who provided destination data, 2104 (95%) in total went on to HE/University.
- Of these, 687 students (31%) went on to HE/University in the same country as the school and 1417 students (64%) to HE/University in other countries. 111 students (5%) went on to take a gap year.
- Leavers from responding COBIS schools went on to a wide variety of UK Universities. Some of the top destinations include Bath Spa University (77 students), University College London (UCL) (31 students), Cambridge, University of (29 students), Edinburgh, University of (24 students) and King's College London (24 students).
- Of the 1417 students who went on to HE/University in other countries, the most popular destination, other than the UK is United States (206 students) followed by Canada (66 students) and Nigeria (30 students)

School Development – Networking and Collaboration

- Responding schools expressed an interest in networking and collaboration in areas relating to school improvement and development.
 - The most popular areas of interest are CPD, Administration and Assessment.

School Development – Future Plans

- The most common current areas of focus across all responding schools are Increase in pupil numbers/capacity, Implementation of new projects and Significant building works/new school site.

Assessments/Examinations offered

- The most common examinations taken in responding COBIS schools in the previous academic year were IGCSE (49% of schools), A-Level (28% of schools) and AS-Level (23% of schools).
- From responding schools, there were 478 Year 13 students examined on IB courses in the last academic year. 459 were full IB Diploma students and 59 were individual course candidates.

Awarding Bodies

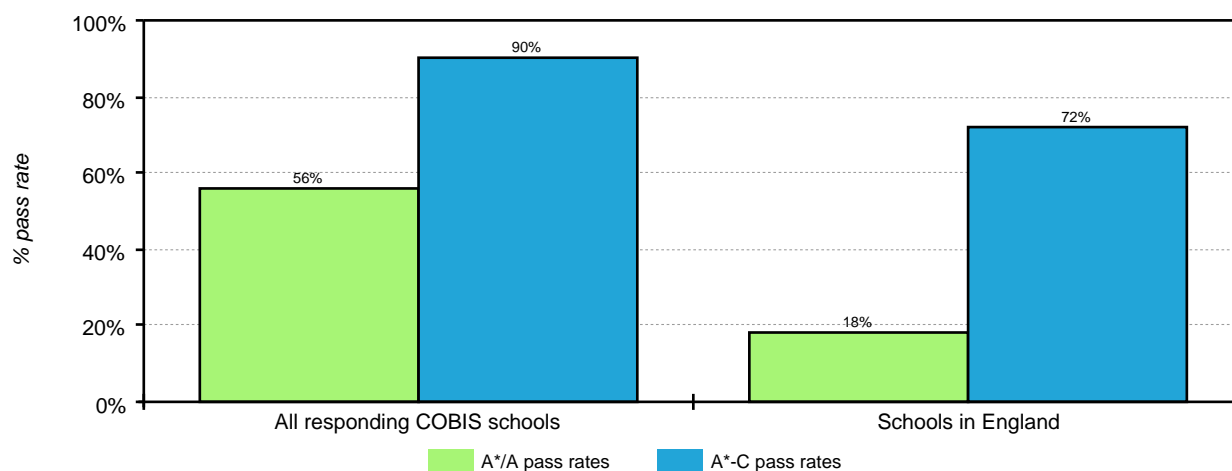
- 33% of responding schools use CIE, 31% use AQA and 16% use Edexcel/Pearson.

GCSE Examination Results

- The average A*/A pass rate of all responding COBIS schools was 56% and the A*-C pass rate was 90%.
- The average A*/A pass rate for all schools in England was 17.6% and the A*-C pass rate was 72.4%.

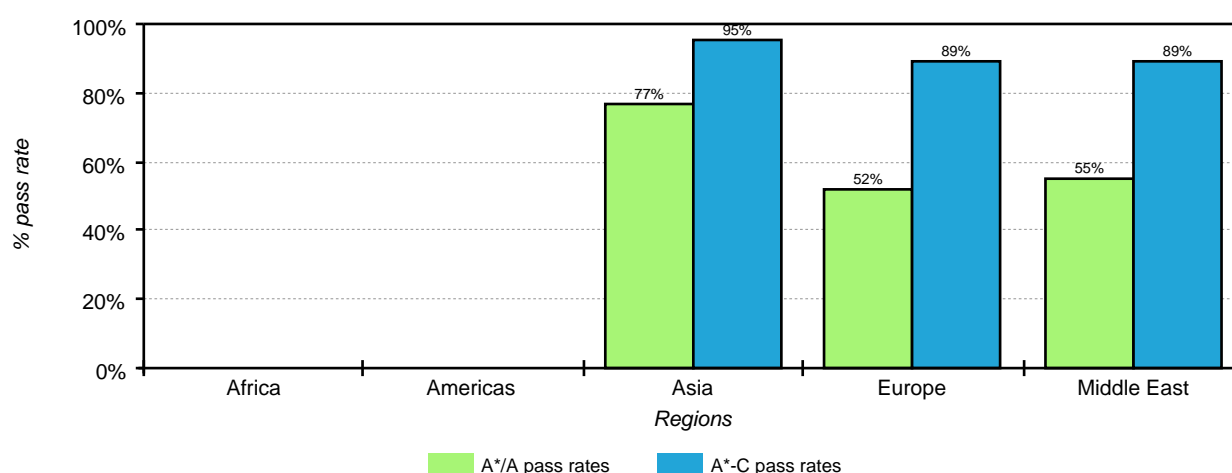
All data can be seen in the chart below.

GCSE A*/A and A*-C pass rate



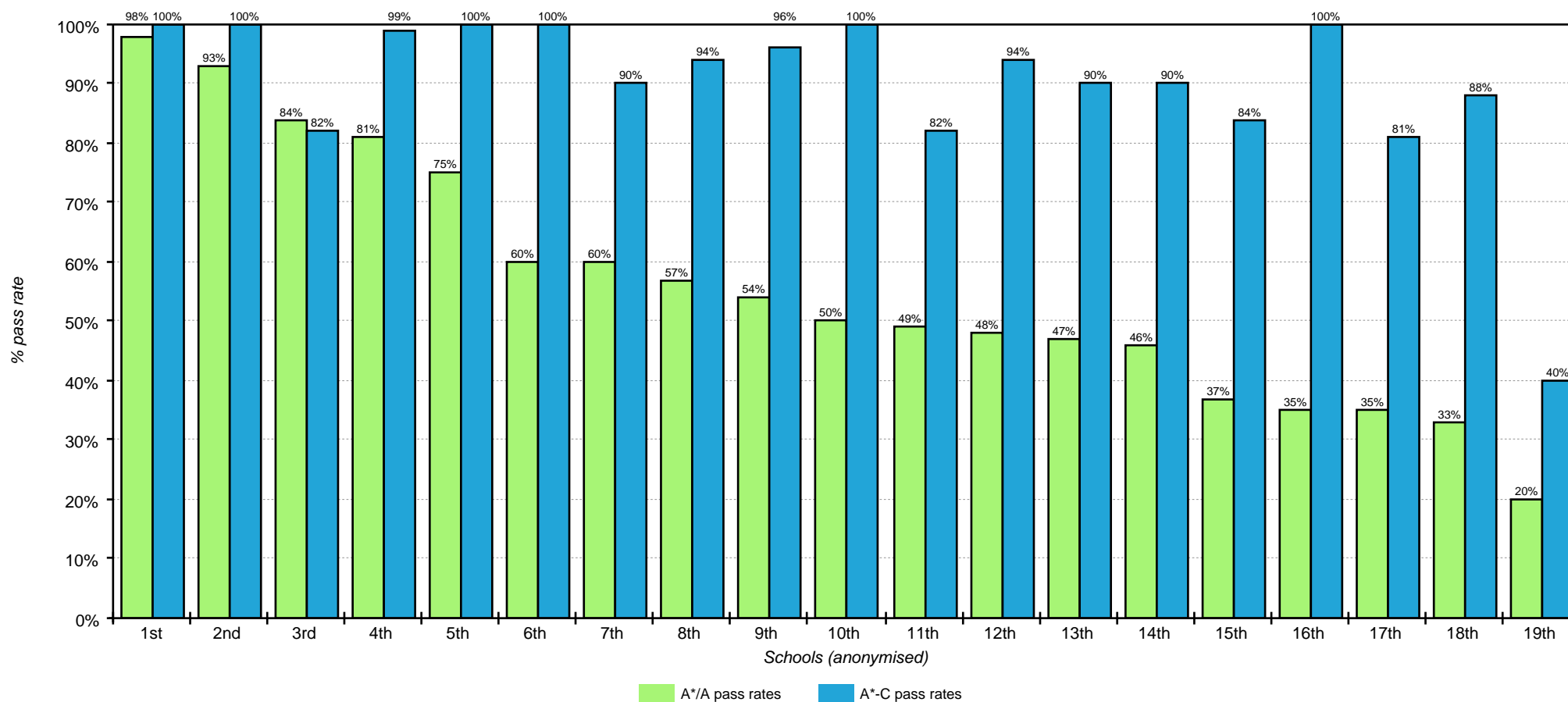
The average GCSE A*/A and A*-C pass rate of all responding schools can be seen below broken down by region.

GCSE A*/A and A*-C pass rate for all schools by region



The GCSE A*/A and A*-C pass rate for all individual responding schools (anonymised) who took the examination can be seen in the chart below.

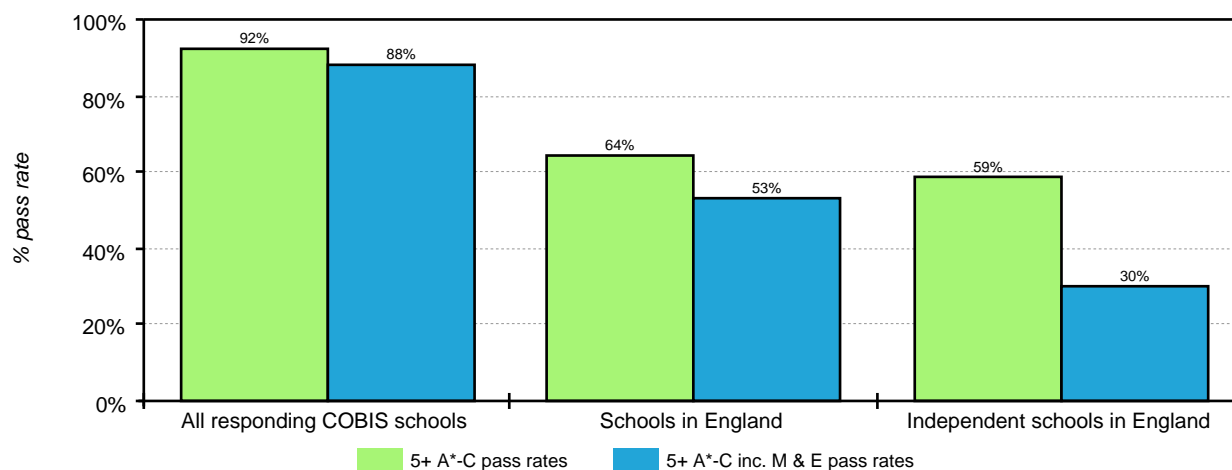
GCSE A*/A and A*-C pass rate for individual schools



- The average 5+ A*-C GCSE pass rate of all responding COBIS schools was 92% and the 5+ A*-C including maths and English pass rate was 88%.
- By comparison, the 5+ A*-C pass rate for all schools in England was 63.8% and the 5+ A*-C including maths and English pass rate was 53.4%. For independent schools in England the 5+ A*-C pass rate was 58.8% and the 5+ A*-C including maths and English pass rate was 29.5%.

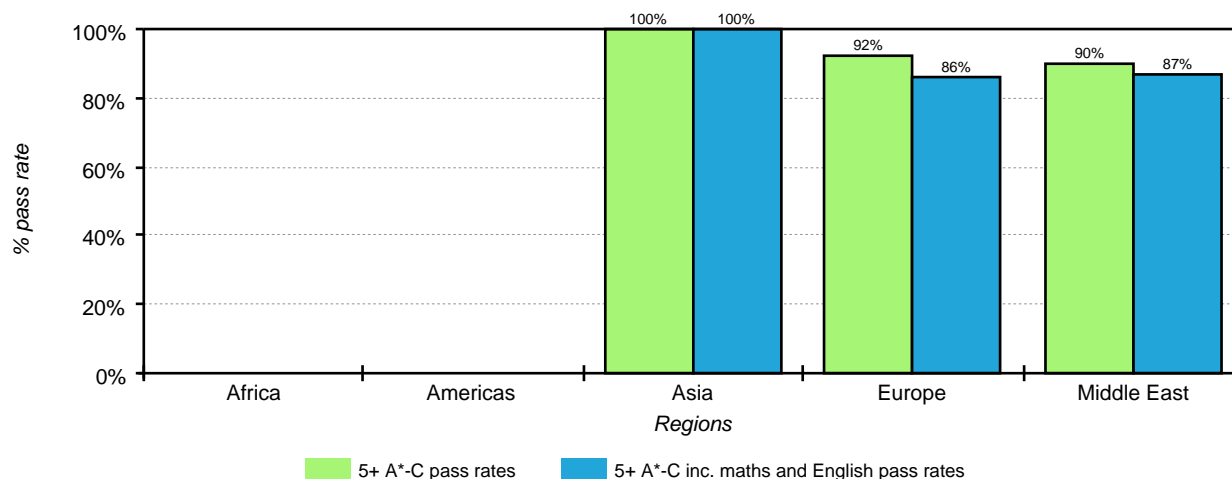
All data can be seen in the chart below.

GCSE 5+ A*-C and 5+ A*-C including maths and English pass rate



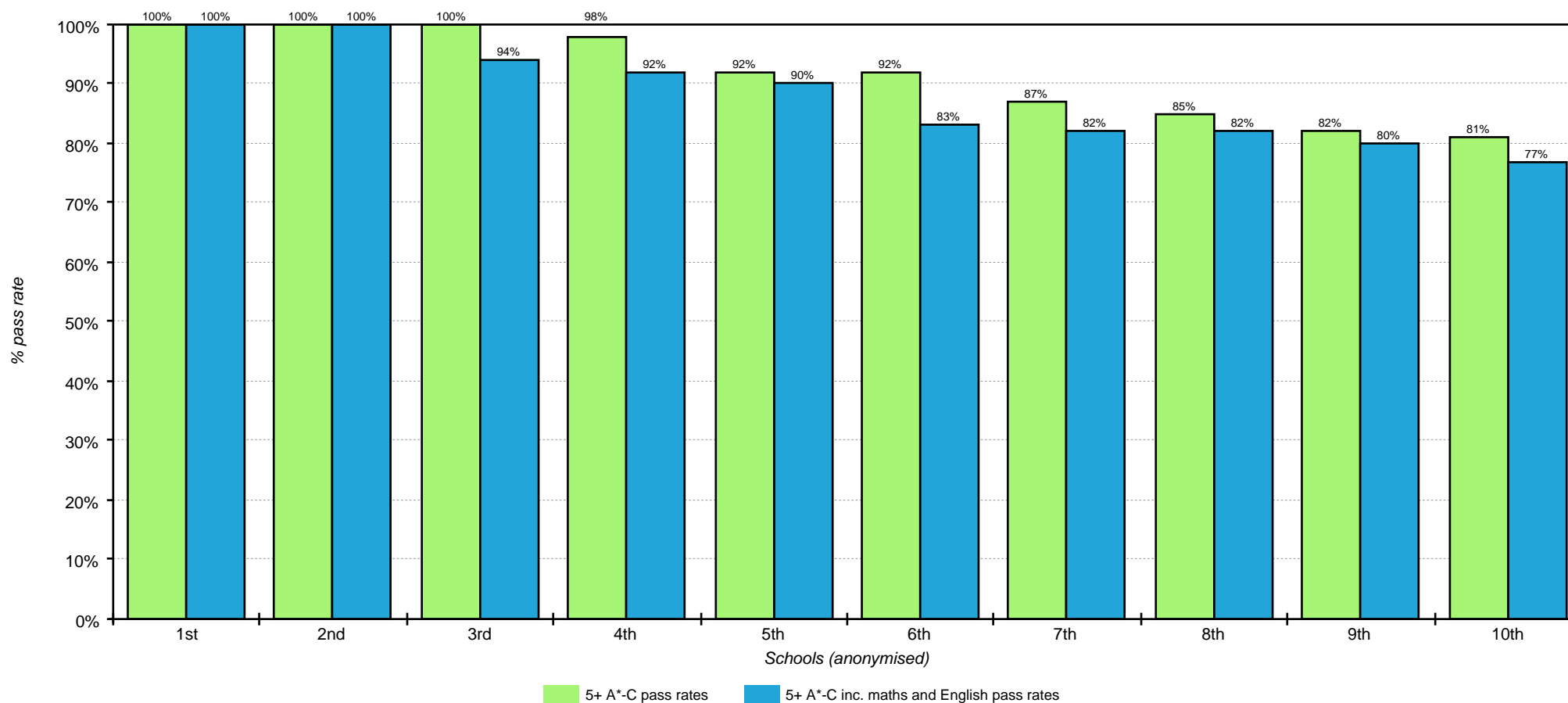
The average GCSE 5+ A*-C and 5+ A*-C including maths and English pass rate of all responding schools can be seen below broken down by region.

GCSE 5+ A*-C and 5+ A*-C including maths and English pass rate for all schools by region



The 5+ A*-C and 5+ A*-C inc. maths and English pass rates of all individual responding schools (anonymised) who took the examination can be seen in the chart below.

GCSE 5+ A*-C and 5+ A*-C inc. maths and English pass rate for individual schools



In performance tables, AS levels are counted as GCSE achievements.

Independent schools data does not include independent special schools.

GCSE and equivalent results in England, 2013 to 2014 (revised) (2015). National tables: SFR2_2015. Accessed October 12, 2015 at: <https://www.gov.uk/government/statistics/revised-gcse-and-equivalent-results-in-england-2013-to-2014>

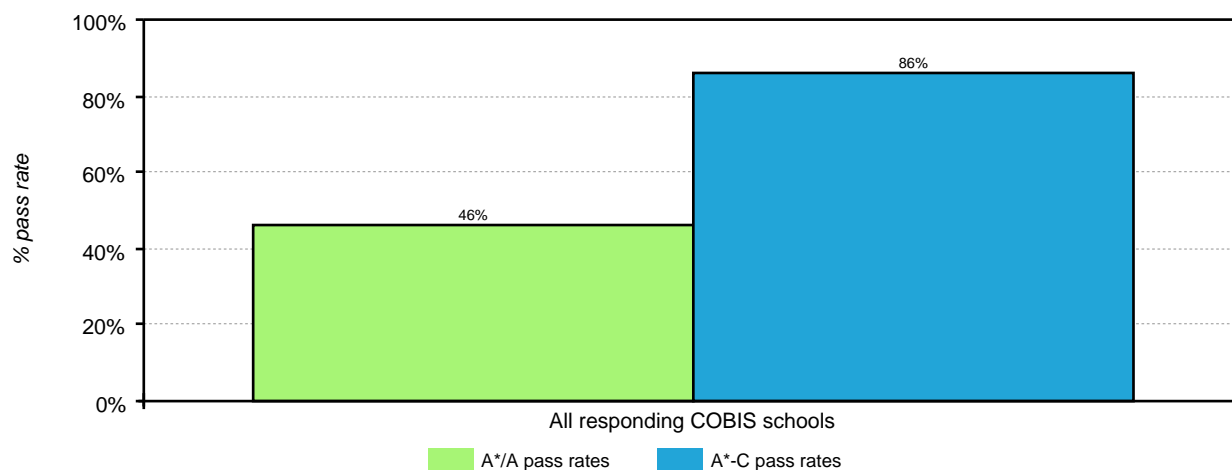
GCSE and equivalent results in England, 2013 to 2014 (revised) (2015). Subject time series tables: SFR2_2015. Accessed October 12, 2015 at: <https://www.gov.uk/government/statistics/revised-gcse-and-equivalent-results-in-england-2013-to-2014>

IGCSE Examination Results

- The average A*/A pass rate of all responding COBIS schools was 46% and the A*-C pass rate was 86%.

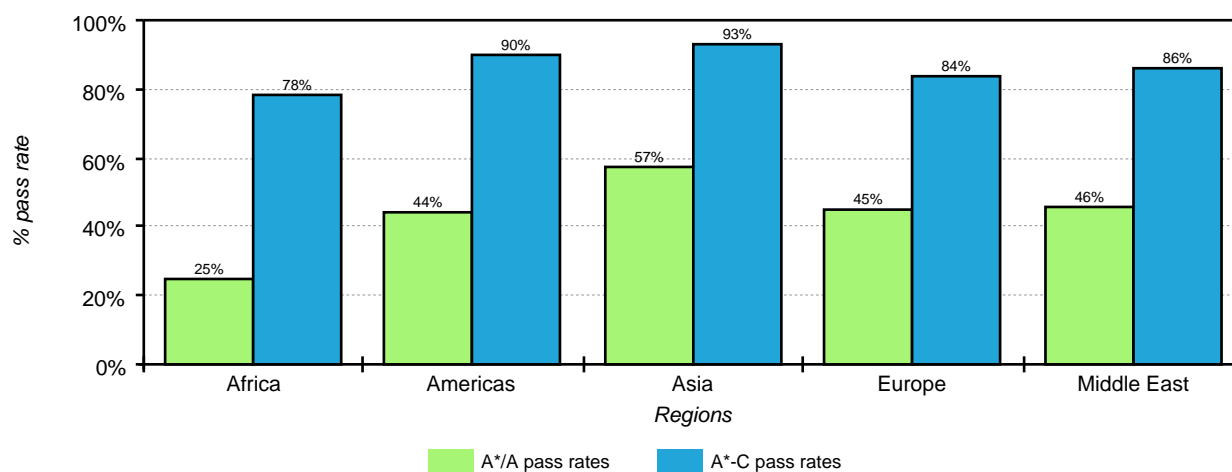
All data can be seen in the chart below.

IGCSE A*/A and A*-C pass rate



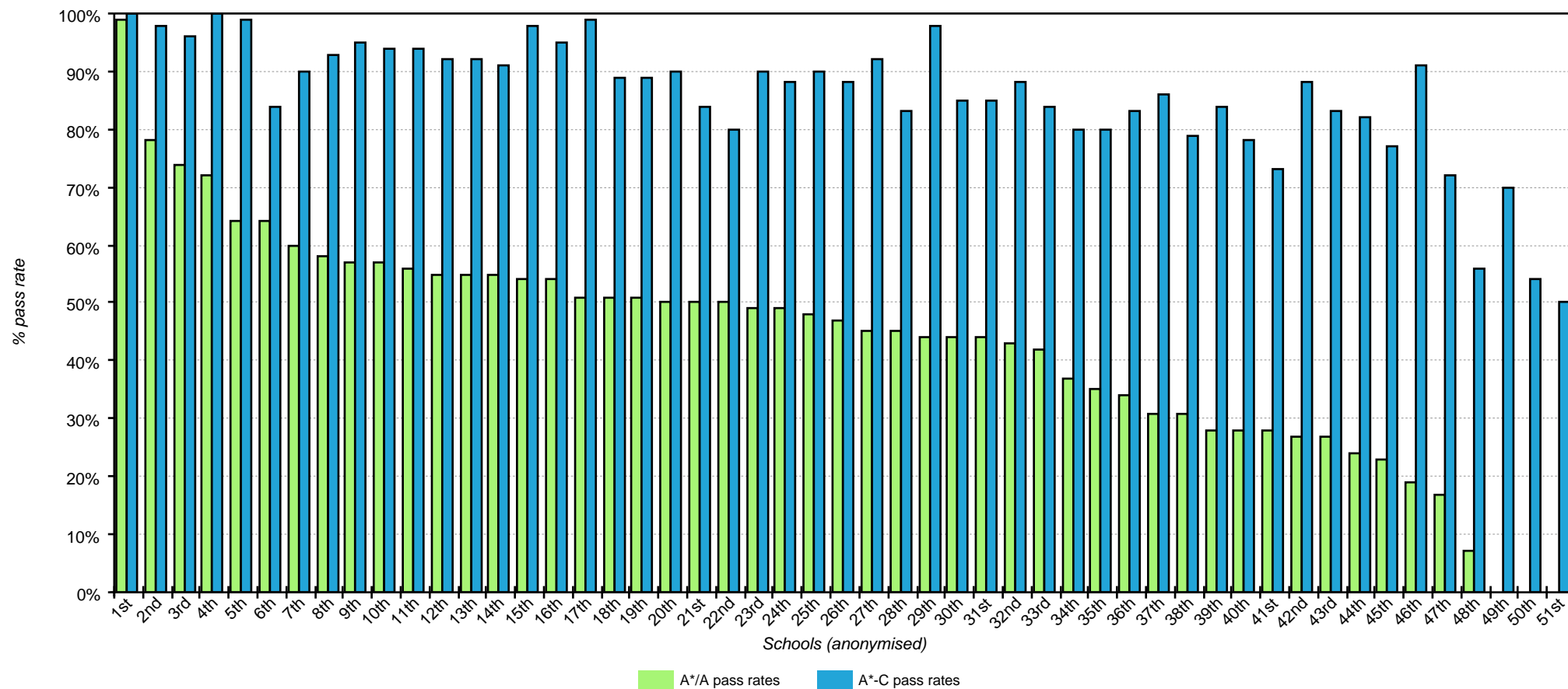
The average IGCSE A*/A and A*-C pass rate of all responding schools can be seen below broken down by region.

IGCSE A*/A and A*-C pass rate for all schools by region



The IGCSE A*/A and A*-C pass rate for all individual responding schools (anonymised) who took the examination can be seen in the chart below.

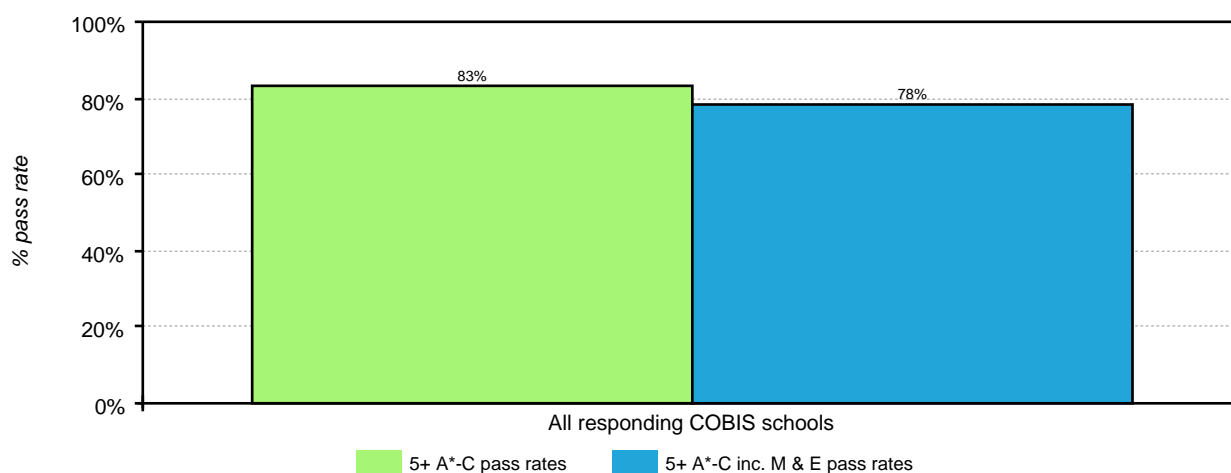
IGCSE A*/A and A*-C pass rate for individual schools



- The average 5+ A*-C IGCSE pass rate of all responding COBIS schools was 83% and the 5+ A*-C including maths and English pass rate was 78%.

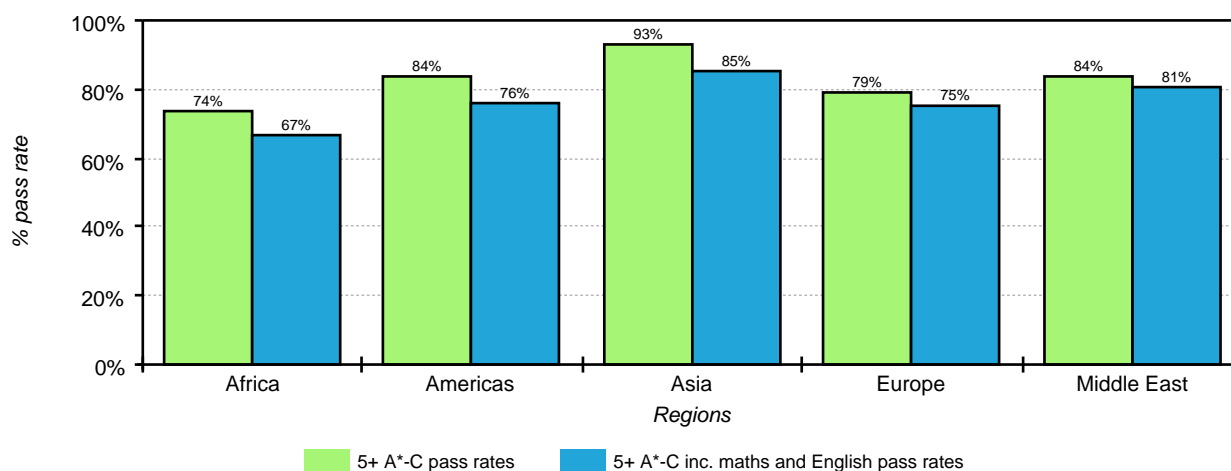
All data can be seen in the chart below.

IGCSE 5+ A*-C and 5+ A*-C including maths and English pass rate



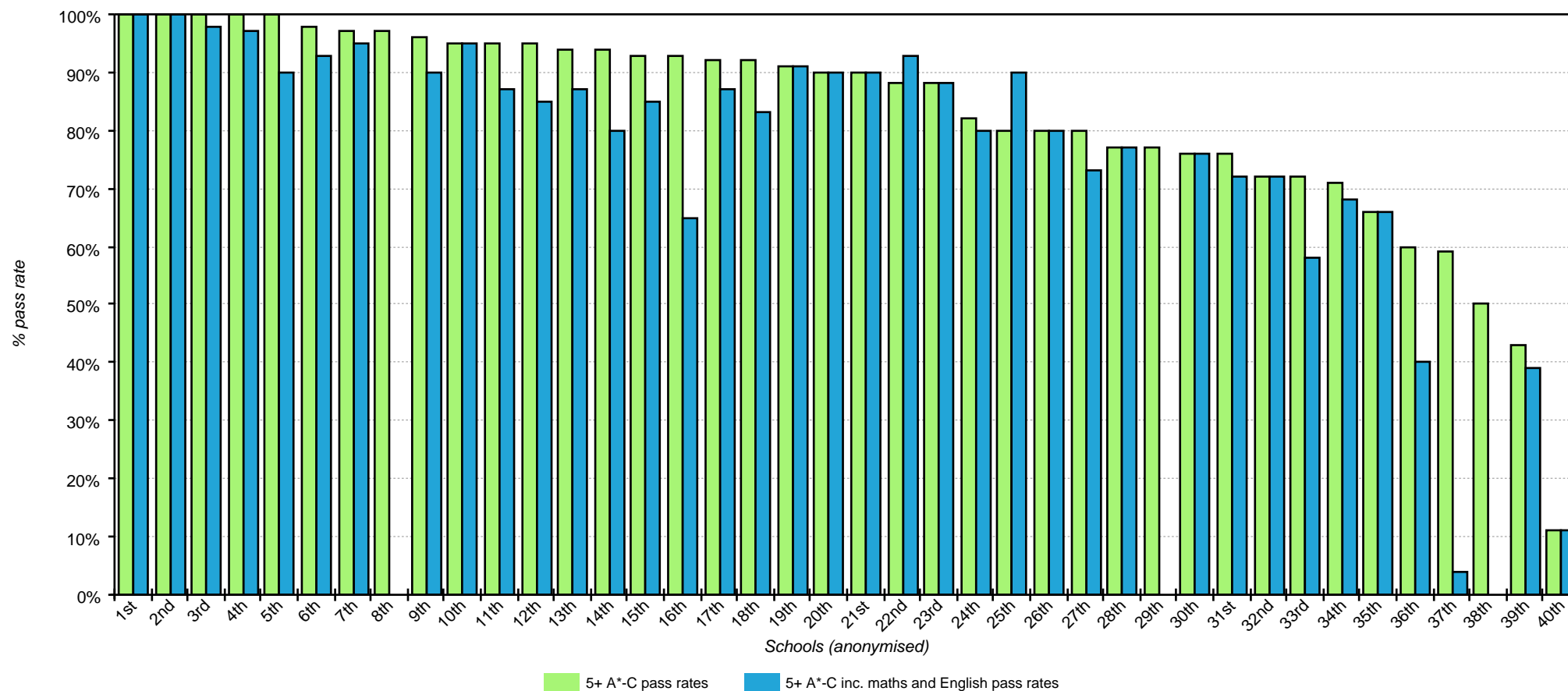
The average IGCSE 5+ A*-C and 5+ A*-C including maths and English pass rate of all responding schools can be seen below broken down by region.

IGCSE 5+ A*-C and 5+ A*-C including maths and English pass rate for all schools by region



The 5+ A*-C and 5+ A*-C inc. maths and English pass rates of all individual responding schools (anonymised) who took the examination can be seen in the chart below.

IGCSE 5+ A*-C and 5+ A*-C inc. maths and English pass rate for individual schools

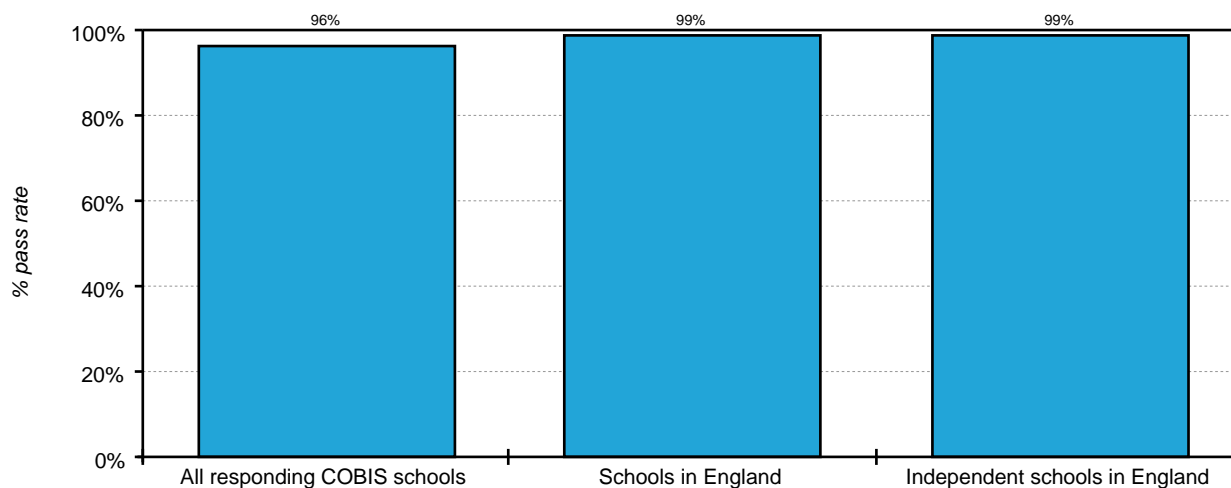


A Level Examination Results

- The average pass rate of all responding COBIS schools was 96%.
- The average pass rate for all schools in England was 98.6% and the average pass rate of independent schools in England was 99.2%.

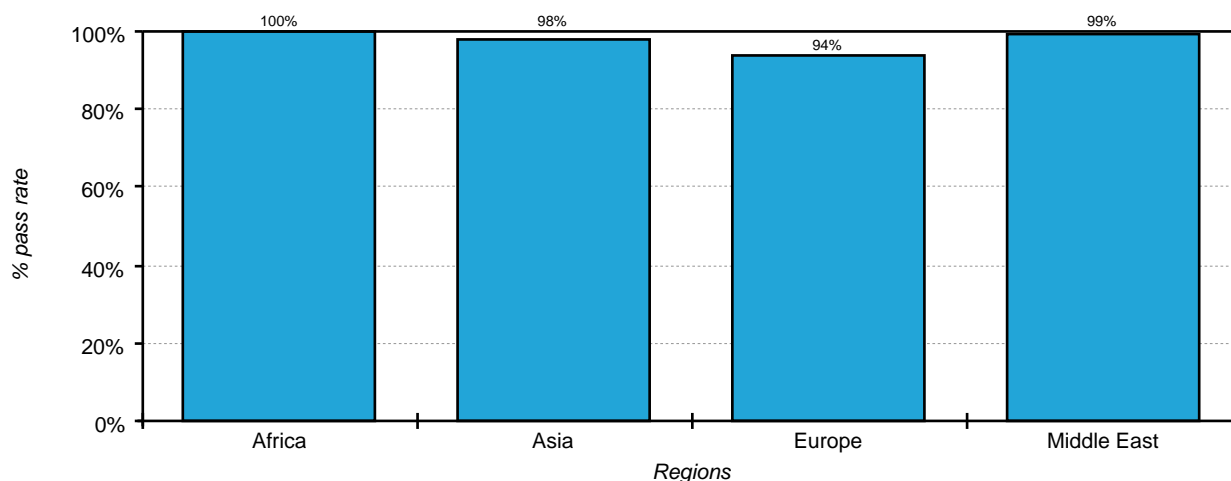
All data can be seen in the chart below.

A Level pass rate



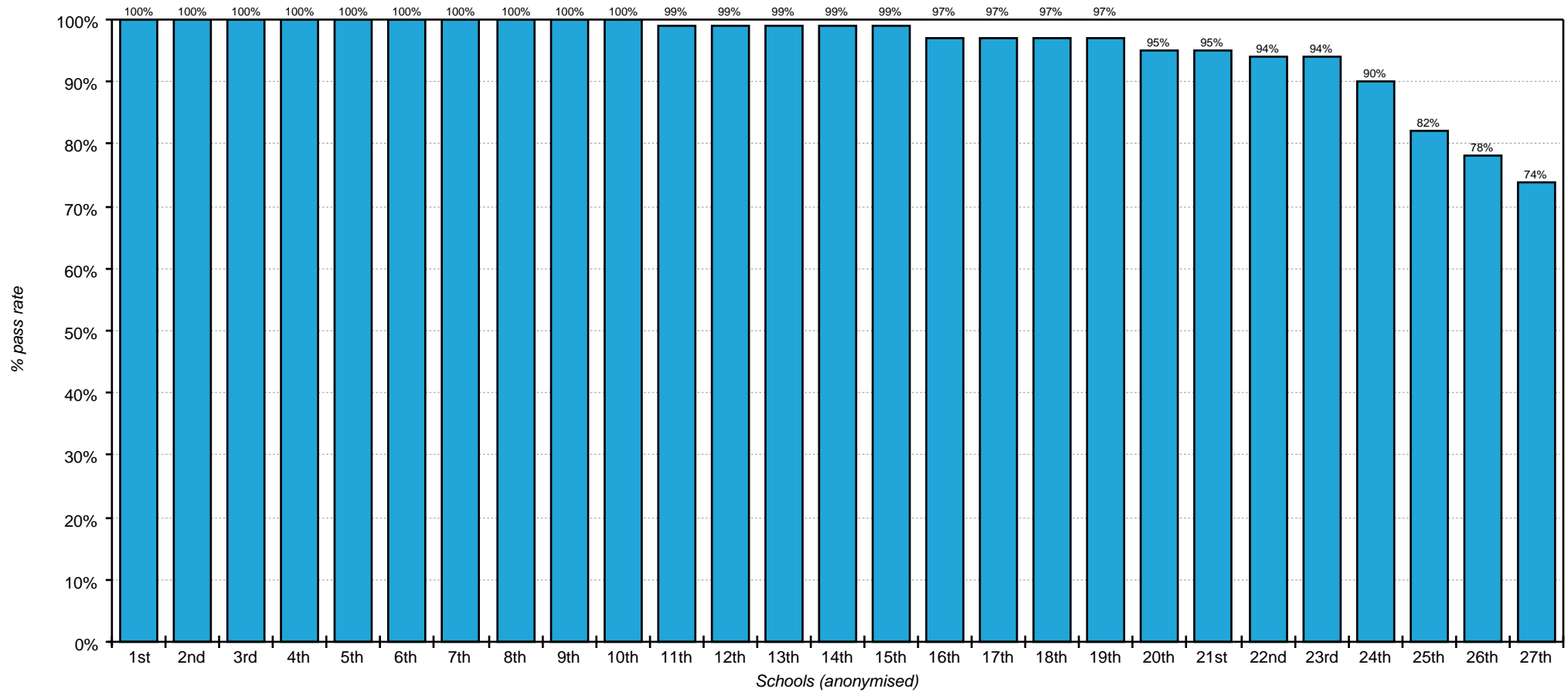
The average A Level pass rate of all responding schools can be seen below broken down by region.

A Level pass rate for all schools by region



The A Level pass rate for all individual responding schools (anonymised) who took the examination can be seen in the chart below.

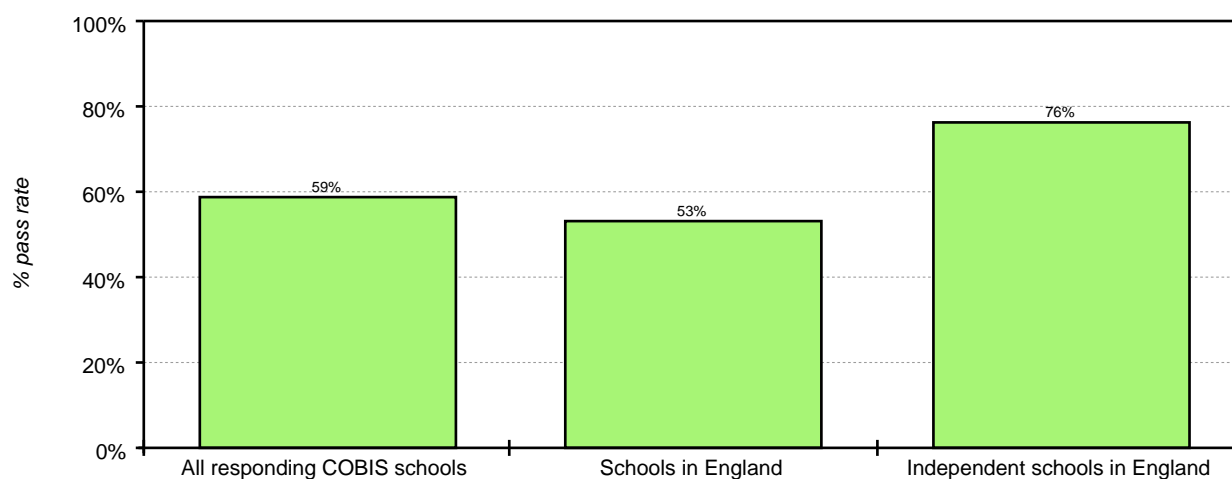
A Level pass rate for individual schools



- The average A/B pass rate of all responding COBIS schools was 59%.
- The average A/B pass rate for all schools in England was 53% and the average A/B pass rate of independent schools in England was 75.9%.

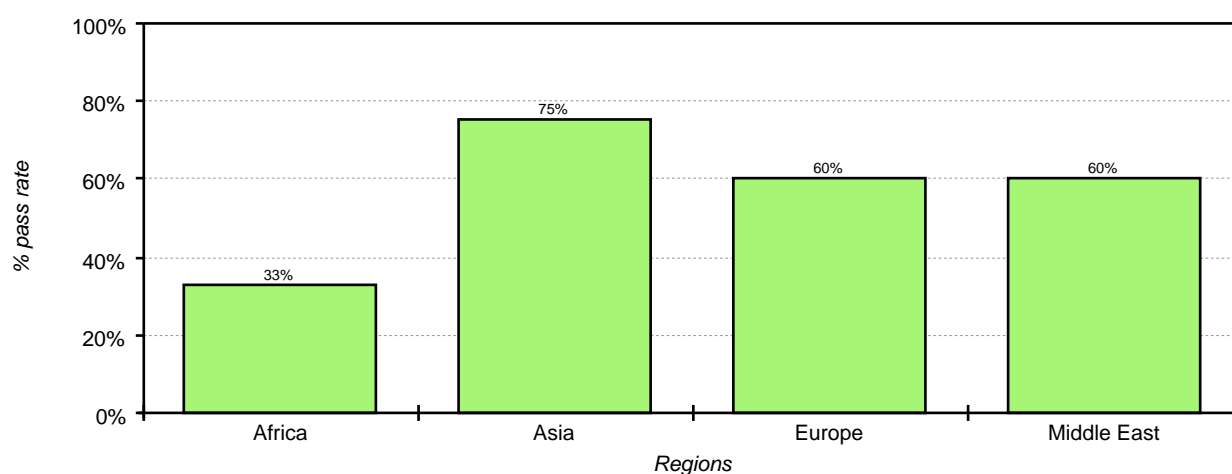
All data can be seen in the chart below.

A Level A/B pass rate



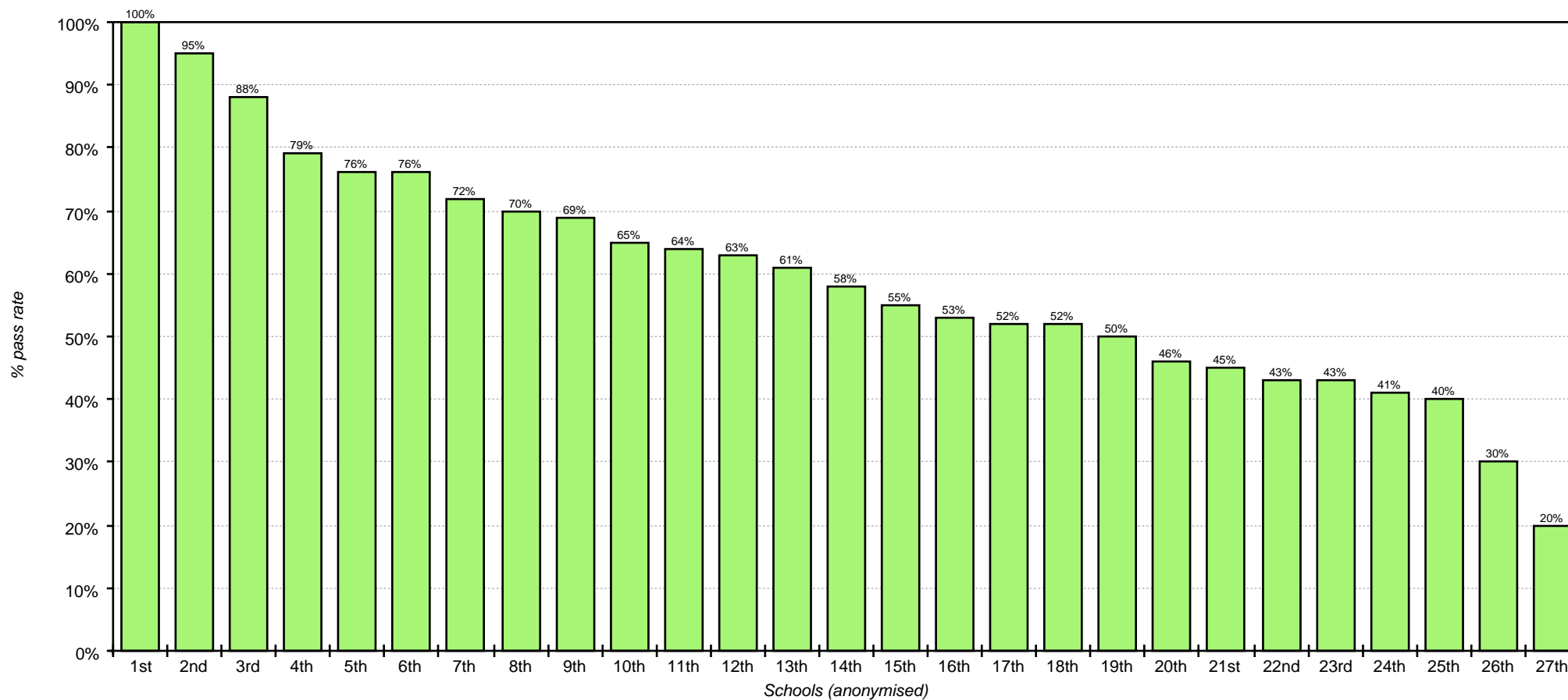
The average A Level A/B pass rate of all responding schools can be seen below broken down by region.

A Level A/B pass rate for all schools by region



The A Level A/B pass rate for all individual responding schools (anonymised) who took the examination can be seen in the chart below.

A Level A/B pass rate for individual schools



The data for schools in England covers A Level results for the 2013/14 academic year.

The independent schools in England figures cover independent special schools, independent schools approved to take pupils with special educational needs (SEN) and non-maintained special schools

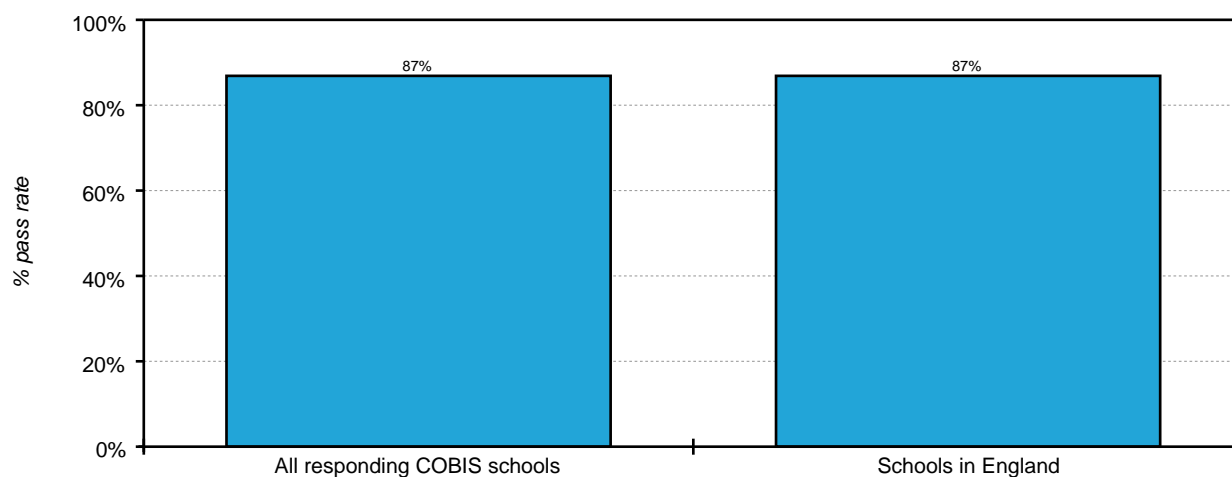
A Level and other level 3 results: academic year 2013 to 2014 (revised) (2015). National tables: SFR03/2015. Accessed October 12th, 2015 at: <https://www.gov.uk/government/statistics/a-level-and-other-level-3-results-2013-to-2014-revised>

AS Level Examination Results

- The average pass rate of all responding COBIS schools was 87%.
- The average pass rate for all schools in England was 87%.

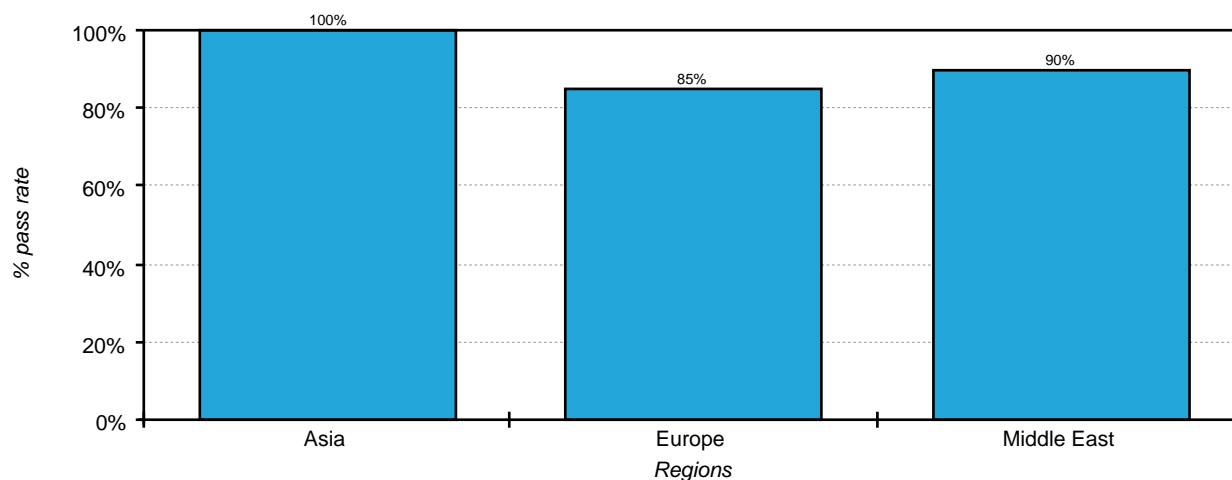
All data can be seen in the chart below.

AS Level pass rate



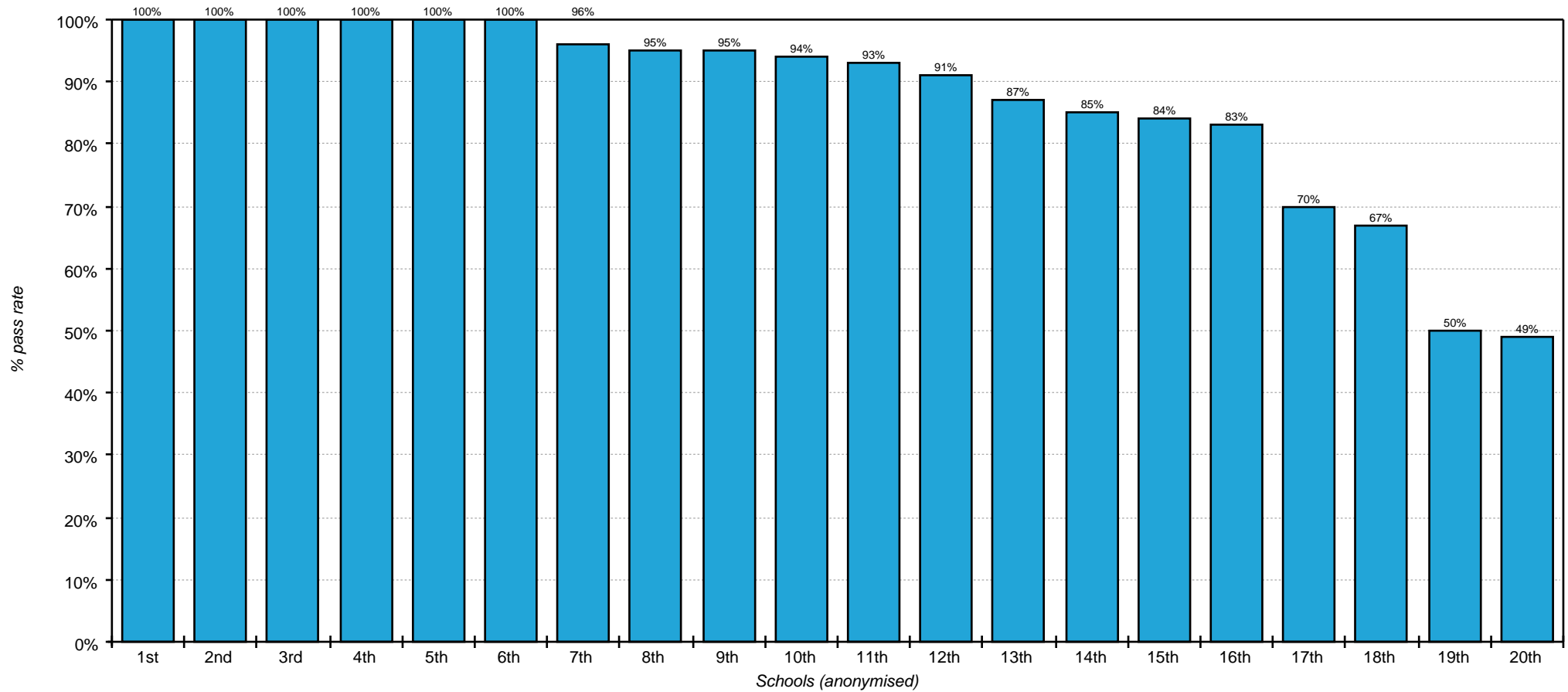
The average AS Level pass rate of all responding schools can be seen below broken down by region.

AS Level pass rate for all schools by region



The AS Level pass rate for all individual responding schools (anonymised) who took the examination can be seen in the chart below.

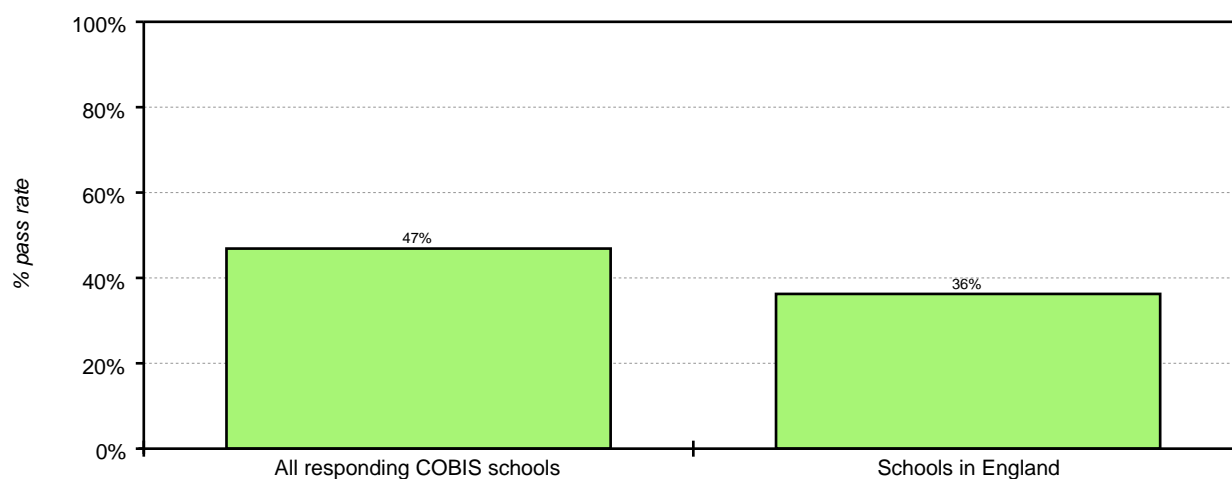
AS Level pass rate for individual schools



- The average A/B pass rate of all responding COBIS schools was 47%.
- The average A/B pass rate for all schools in England was 36.2%.

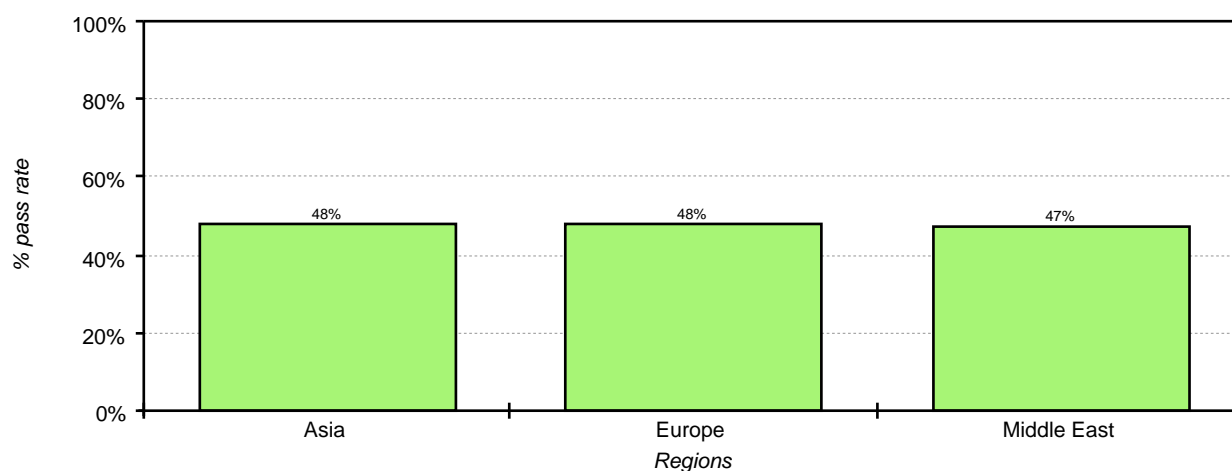
All data can be seen in the chart below.

AS Level A/B pass rate



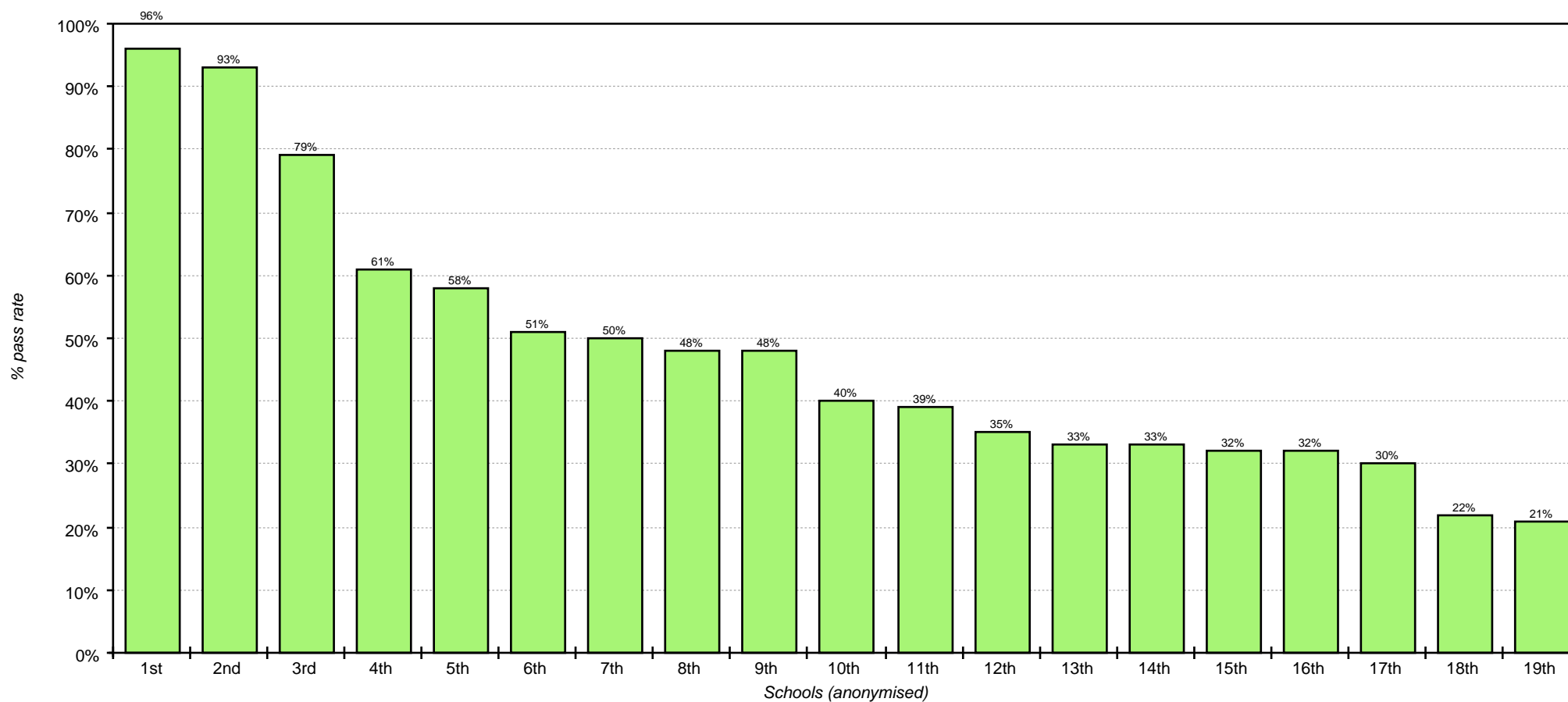
The average AS Level A/B pass rate of all responding schools can be seen below broken down by region.

AS Level A/B pass rate for all schools by region



The AS Level A/B pass rate for all individual responding schools (anonymised) who took the examination can be seen in the chart below.

AS Level A/B pass rate for individual schools



The data for schools in England covers AS Level results for the 2013/14 academic year.

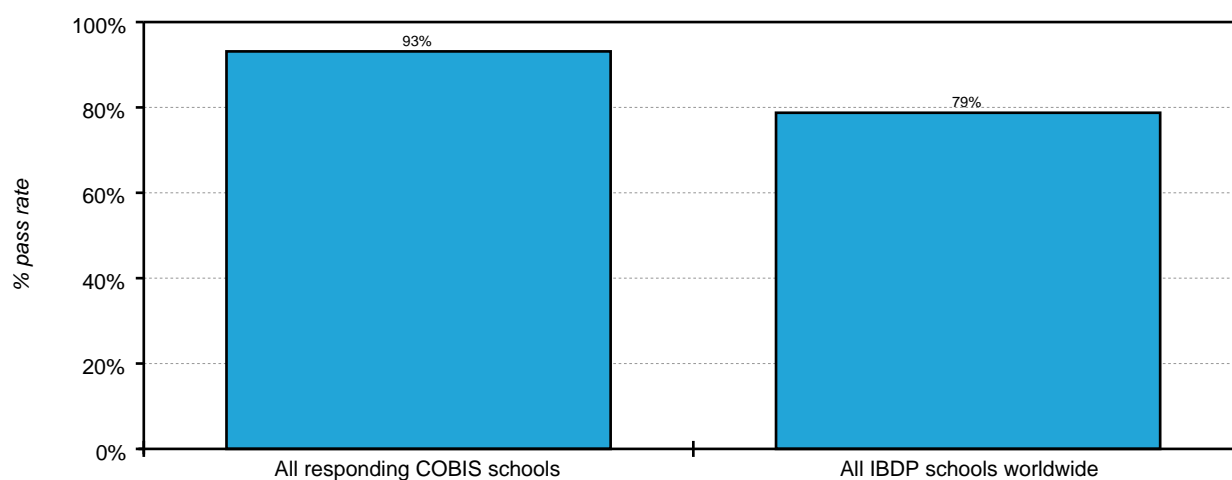
AS Level and other level 3 results: academic year 2013 to 2014 (revised) (2015). National tables: SFR03/2015. Accessed October 12th, 2015 at: <https://www.gov.uk/government/statistics/a-level-and-other-level-3-results-2013-to-2014-revised>

IB Diploma Examination Results

- The pass rate for responding COBIS schools was 93% and the average score 33.2.
- 14% of students passed the IB Diploma with a score of 40 points or more.
- The average pass rate for all schools taking the IB Diploma worldwide was 79.3%.

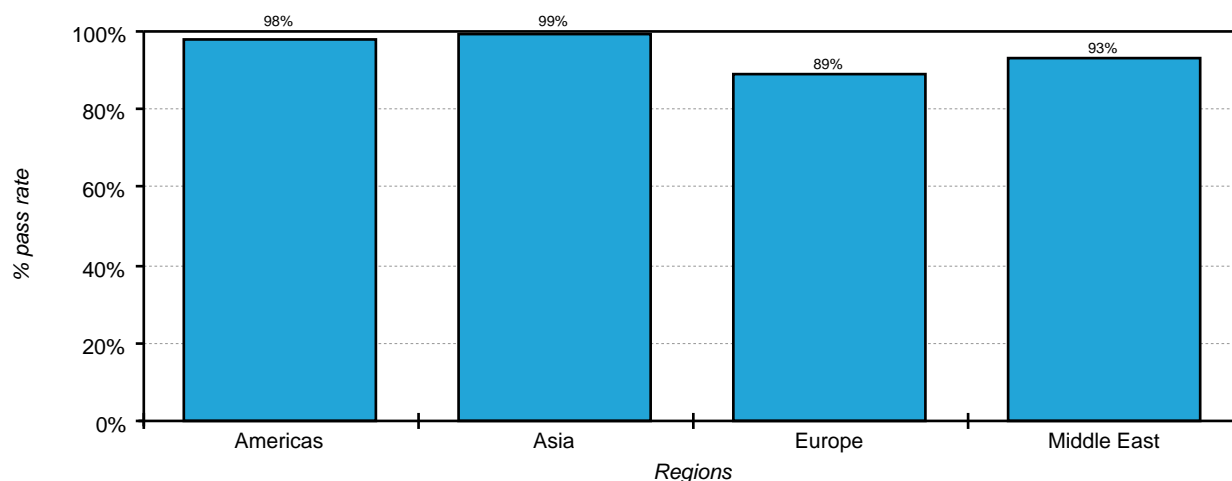
All data can be seen in the chart below.

IB Diploma pass rate



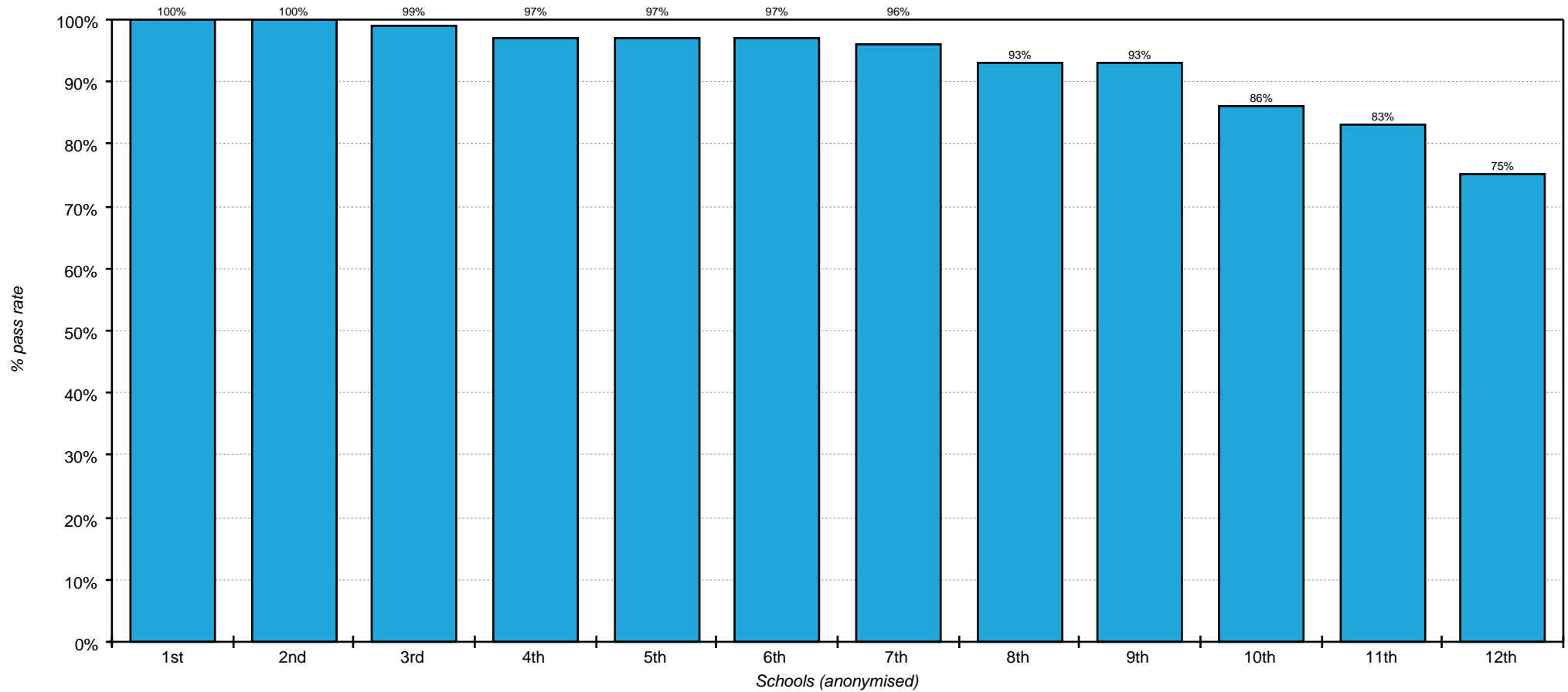
The average IB Diploma pass rate of all responding schools can be seen below broken down by region.

IB Diploma pass rate for all schools by region



The IB Diploma pass rate for all individual responding schools (anonymised) who took the examination can be seen in the chart below.

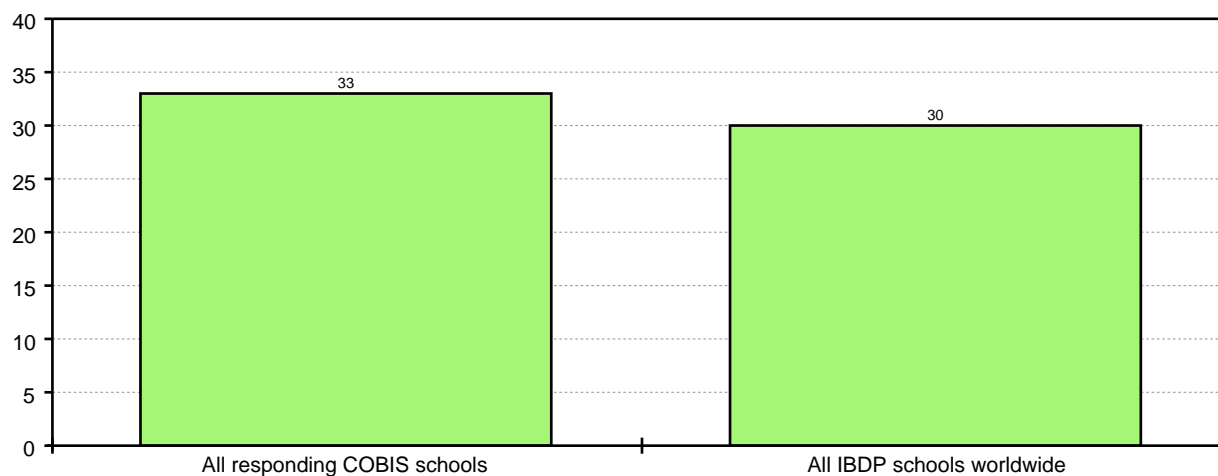
IB Diploma pass rate for individual schools



- The average points total of responding COBIS schools was 33.2.
- The average points total for all schools taking the IB Diploma worldwide was 30.1.

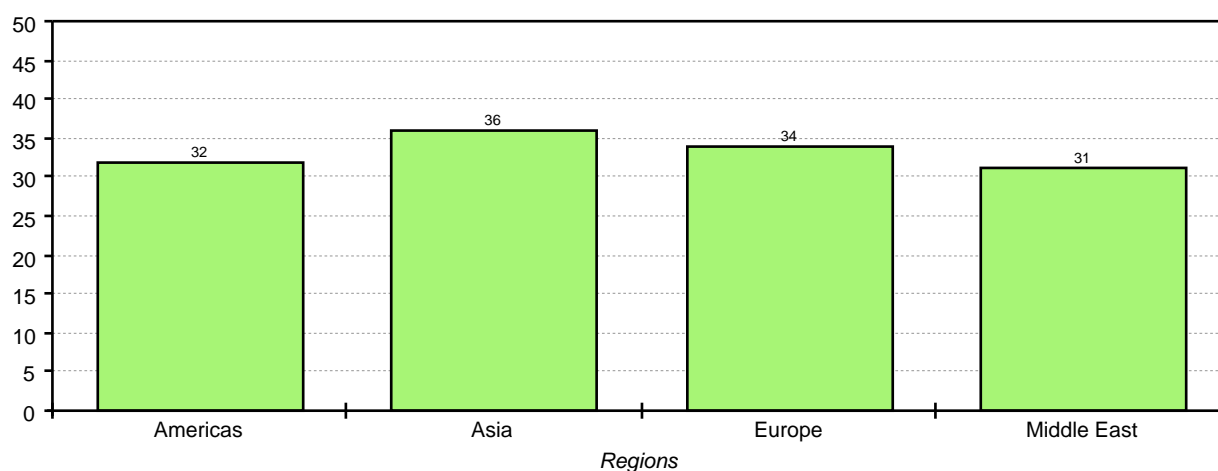
All data can be seen in the chart below.

IB Diploma average points total



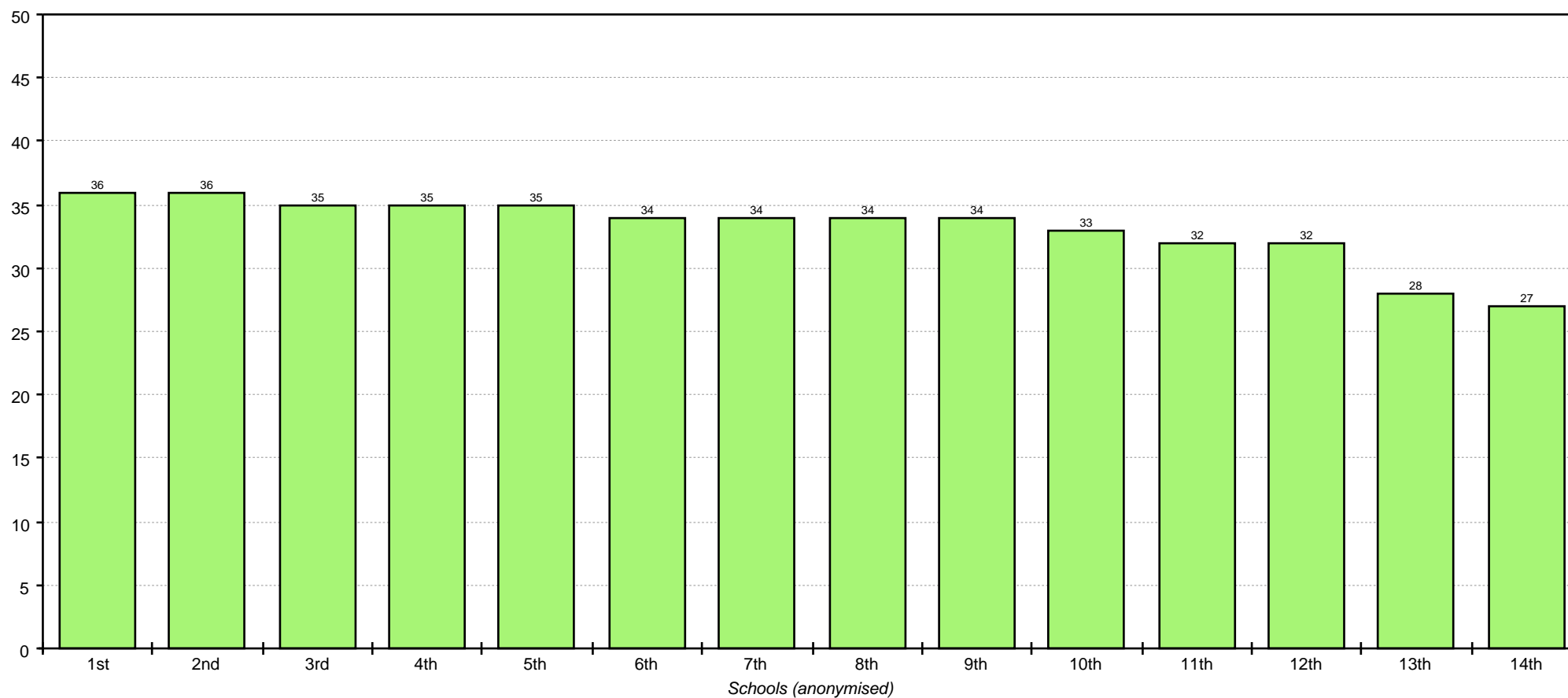
The average points total of all responding schools can be seen below broken down by region.

IB Diploma average points total by region



The average points total for all individual responding schools (anonymised) who took the examination can be seen in the chart below.

IB Diploma average points total for individual schools



Data for all IB Diploma candidates is provided for comparison. Statistical bulletins are produced following each Diploma Programme examination session. The IB Diploma Statistical Bulletin, May 2014 Examination Session (2014). Accessed December 10, 2014 at: <http://www.ibo.org/facts/statbulletin/dpstats/documents/May-2014-Stats-Bulletin.pdf>