



COBIS Annual Research Survey 2017 School Data Summary Report

In case of enquiries please contact COBIS by emailing cpd@cobis.org.uk.
Copyright © 2017 GL Education Ltd.





We are delighted to be working with COBIS once again to produce the 2017 Annual Research Survey.

We work to provide schools with assessments to help teachers and senior leaders deliver whole school improvement, realise every student's potential and engage effectively with their stakeholders.

Our assessments of attainment, attitude and ability give teachers a 'whole pupil' view which helps them to develop students into confident and happy learners who succeed at school.



www.gl-education.com

COBIS Annual Research Survey 2017

This report details the findings of the COBIS Annual Research Survey, conducted in 2017, in partnership with GL Education. The Annual Research Survey collects information about assessment and curriculum choices, examination results, and University destinations. The findings support the lobbying work of COBIS and inform the strategic development of the association.

COBIS represents more than 275 high-quality British International Schools in 80 countries worldwide. These schools educate c.140,000 pupils and employ more than 30,000 teachers and support staff.

The Annual Research Survey was carried out between 6 October 2017 and 10 November 2017. 135 schools responded to the survey. The following report provides a summary of the findings. All data presented represents responding schools unless otherwise specified.

Membership Category

There are three levels of membership in the COBIS Membership Framework. COBIS Patron's Accredited Schools have completed the COBIS Patron's Accreditation. COBIS Accredited Member Schools have undergone a successful British Schools Overseas (BSO) inspection. COBIS Member Schools have completed COBIS Compliance.

Geographic Location

There are currently 276 COBIS schools worldwide, located in 80 countries. For the purpose of reporting and high-level analysis, COBIS schools are grouped into five geographical regions: Africa, America, Asia, Europe and the Middle East.

- 41% of COBIS Schools are in Europe
- 24% of COBIS Schools are in Africa
- 17% of COBIS Schools are in the Middle East
- 16% of COBIS Schools are in Asia
- 4% of COBIS Schools are in the Americas

Data Sources

The primary data contained in this report was collected during the COBIS Annual Research Survey; 135 schools responded to the survey.

All top-line report figures are reliable to within 10% at the 95% confidence level.

Benchmarking Data

- UK School data came from the JCQ Summer 2017 results. ^[1,2]
- UK Primary Phase data came from the Ofsted Key Stage 2 expected figures ^[3], Summer 2017.
- UK Independent School data came from the ISC Summer 2017 results. ^[4]
- IB Diploma data came from the ISC Summer 2017 results^[4] and IBO results. ^[5]
- International School data came from the Pearson June 2017 results. ^[6,7]
- Additional international School data came from Cambridge International results, June 2017. ^[8,9]

1 - <https://www.jcq.org.uk/examination-results/gcse/2017>

2 - <https://www.jcq.org.uk/examination-results/a-levels/2017>

3 - <https://www.gov.uk/government/statistics/national-curriculum-assessments-key-stage-2-2017-provisional>

4 - <https://www.isc.co.uk/research/exam-results/>

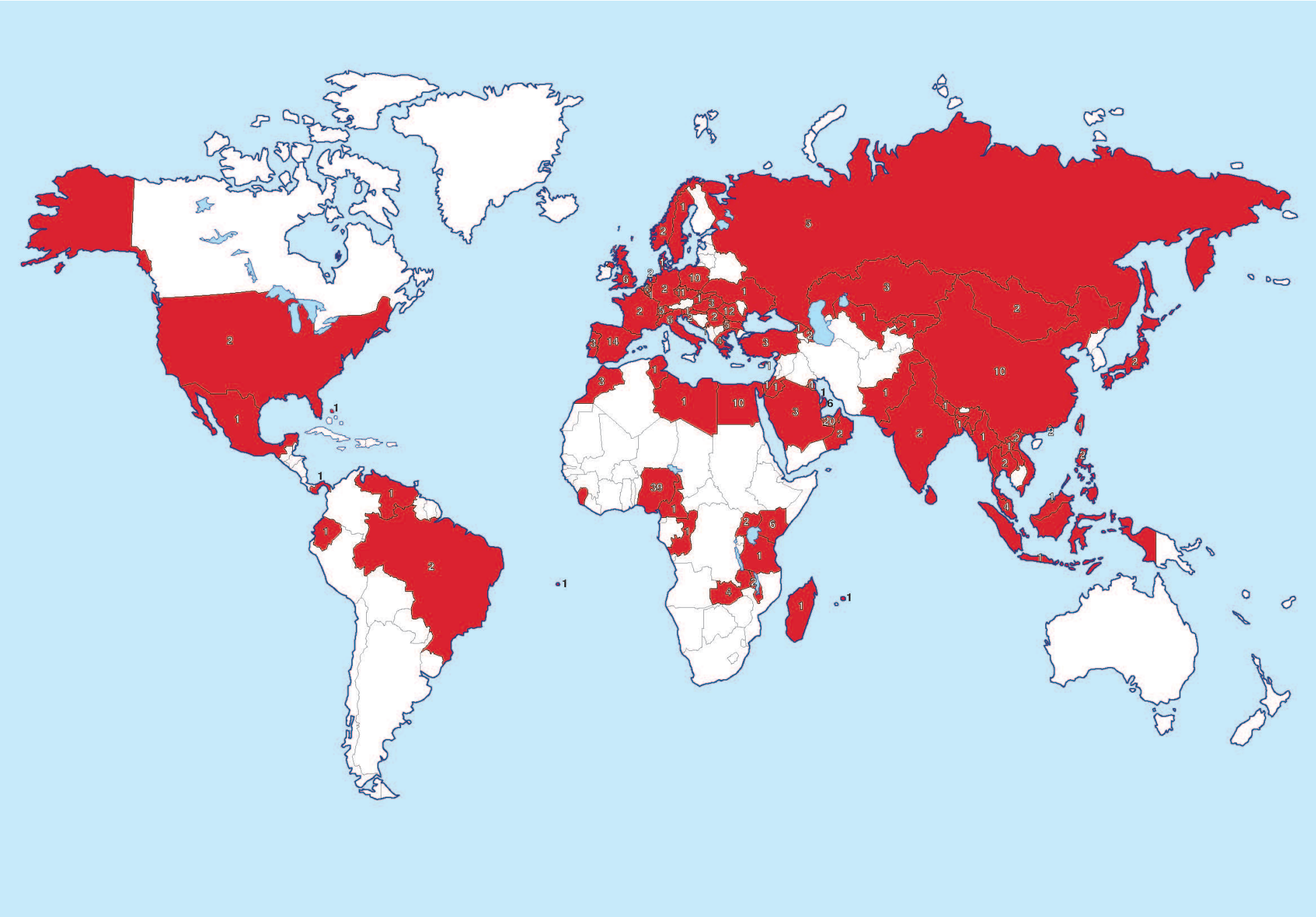
5 - <http://www.ibo.org/contentassets/bc850970f4e54b87828f83c7976a4db6/dp-statistical-bulletin-may-2017-en.pdf>

6 - <https://qualifications.pearson.com/en/support/support-topics/results-certification/grade-statistics.html?Qualification-Family=International-GCSE>

7 - <https://qualifications.pearson.com/en/support/support-topics/results-certification/grade-statistics.html?Qualification-Family=International-Advanced-Level>

8 - <http://www.cambridgeinternational.org/programmes-and-qualifications/cambridge-advanced/cambridge-international-as-and-a-levels/results-statistics/>

9 - <http://www.cambridgeinternational.org/programmes-and-qualifications/cambridge-secondary-2/cambridge-igcse/results-statistics/>



Number of COBIS schools by country

Country	Number of COBIS schools
Ascension Island	1
Azerbaijan	2
Bangladesh	1
Belgium	4
Bermuda	1
Brazil	2
Brunei	1
Bulgaria	5
Cameroon	1
China	10
Congo	1
Croatia	2
Czech Republic	11
Denmark	1
Ecuador	1
Egypt	10
France	2
Georgia	1
Germany	2
Greece	4
Hong Kong	2
Hungary	3
India	2
Indonesia	1
Israel	1
Italy	6
Japan	2
Jordan	1
Kazakhstan	3
Kenya	6
Kingdom of Saudi Arabia	3
Kingdom of Bahrain	1
Kuwait	4
Kyrgyzstan	1
Luxembourg	1
Madagascar	1
Malawi	2
Malaysia	4
Mauritius	1
Mexico	1

Country	Number of COBIS schools
Mongolia	2
Montenegro	1
Morocco	3
Myanmar	1
Nepal	1
Nigeria	39
North Cyprus	1
Norway	2
Oman	2
Pakistan	1
Panama	1
Philippines	2
Poland	10
Portugal	3
Qatar	6
Republic of Korea	1
Romania	12
Russia	5
Serbia	2
Sierra Leone	1
Slovakia	1
Slovenia	1
Spain	14
Sweden	1
Switzerland	5
Taiwan	1
Tanzania	1
Thailand	2
The Netherlands	2
Tunisia	1
Turkey	3
Uganda	2
Ukraine	1
United Arab Emirates	20
United Kingdom	6
USA	2
Uzbekistan	1
Venezuela	1
Vietnam	2
Zambia	4

Executive Summary

School Phases

- 73% of responding schools teach both primary and secondary phase.
- 17% of responding schools teach primary phase only.
- 11% of responding schools teach secondary phase only.

Curriculum Followed by Schools

COBIS Schools follow a range of curricula, often used in combination.

UK National Curriculum	89%
Cambridge Secondary	25%
IB Diploma	24%
Local National Curriculum	19%
IPC	16%
Other	13%
Cambridge Primary	11%
PYP	4%
MYP	3%

Assessments / Examinations Offered by Schools

The most common examinations taken in responding COBIS schools in the previous academic year were IGCSE and A-Level.

IGCSE	67%
A-Level	43%
AS-Level	36%
GCSE	36%
Other	30%
IB	24%
KS2 UK National Curriculum Tests	21%
Checkpoint	16%

Awarding Bodies Used by Schools

CIE	60%
Edexcel/Pearson	48%
AQA	23%
Other	15%

University Destinations

There were a total of 2,171 leavers across all responding schools during the previous academic year. More than 50% of those leavers went on to University in the UK.

Proportion of leavers going on to University/HE	92%
Proportion of leavers going on to University/HE in the UK	52%
Proportion of leavers going on to University/HE in the host country	15%

Leavers from responding COBIS schools went on to a wide variety of UK Universities. Some of the top destinations include University College London, University of Bath, and University of Manchester. See p.15 for more detail.

For students who went on to University in countries other than the UK or the host school country, the most popular destinations were the United States, Canada and Australia. See p.16 for more detail.

Primary Phase Results

Percentage of students reaching the expected level in Key Stage 2 National Curriculum tests:

	COBIS	OFSTED	Difference
Reading, writing and maths	73%	61%	12%
Reading	80%	71%	9%
Writing	86%	76%	10%
Maths	80%	75%	5%
Grammar, punctuation and spelling	80%	77%	3%

Only highlighted differences can be considered significant.

GCSE / IGCSE Results

For reporting purposes, GCSE and IGCSE results were combined into a single measure. With the transition to the new numbered grading structure, 7-9 has been taken as equivalent to A*/A and 4-9 has been taken as equivalent to A*-C.

	COBIS	UK	Difference	Independent	Difference
GCSE / IGCSE A*/A pass rate	53%	20%	33%	58%	-5%
GCSE / IGCSE A* - C pass rate	91%	66%	24%	93%	-2%
Overall GCSE / IGCSE pass rate	99%	98%	0%	100%	-1%

	COBIS	International			
	COBIS	Pearson	Difference	CIE	Difference
GCSE / IGCSE A*/A pass rate	53%	42%	12%	45%	8%
GCSE / IGCSE A* - C pass rate	91%	69%	21%	83%	8%
Overall GCSE / IGCSE pass rate	99%	100%	-1%	99%	-1%

Only highlighted differences can be considered significant.

A Level Results

	COBIS	UK	Difference	Independent	Difference
A Level A* / A pass rate	39%	26%	12%	45%	-6%
A Level A* - B pass rate	63%	53%	9%	72%	-9%
A Level A* - C pass rate	80%	78%	2%	88%	-9%
A Level overall pass rate	98%	98%	0%	99%	-1%

	COBIS	International			
	COBIS	Pearson	Difference	CIE	Difference
A Level A* / A pass rate	39%	26%	12%	21%	18%
A Level A* - B pass rate	63%	46%	16%	39%	24%
A Level A* - C pass rate	80%	64%	16%	57%	22%
A Level overall pass rate	98%	86%	12%	88%	10%

Only highlighted differences can be considered significant.

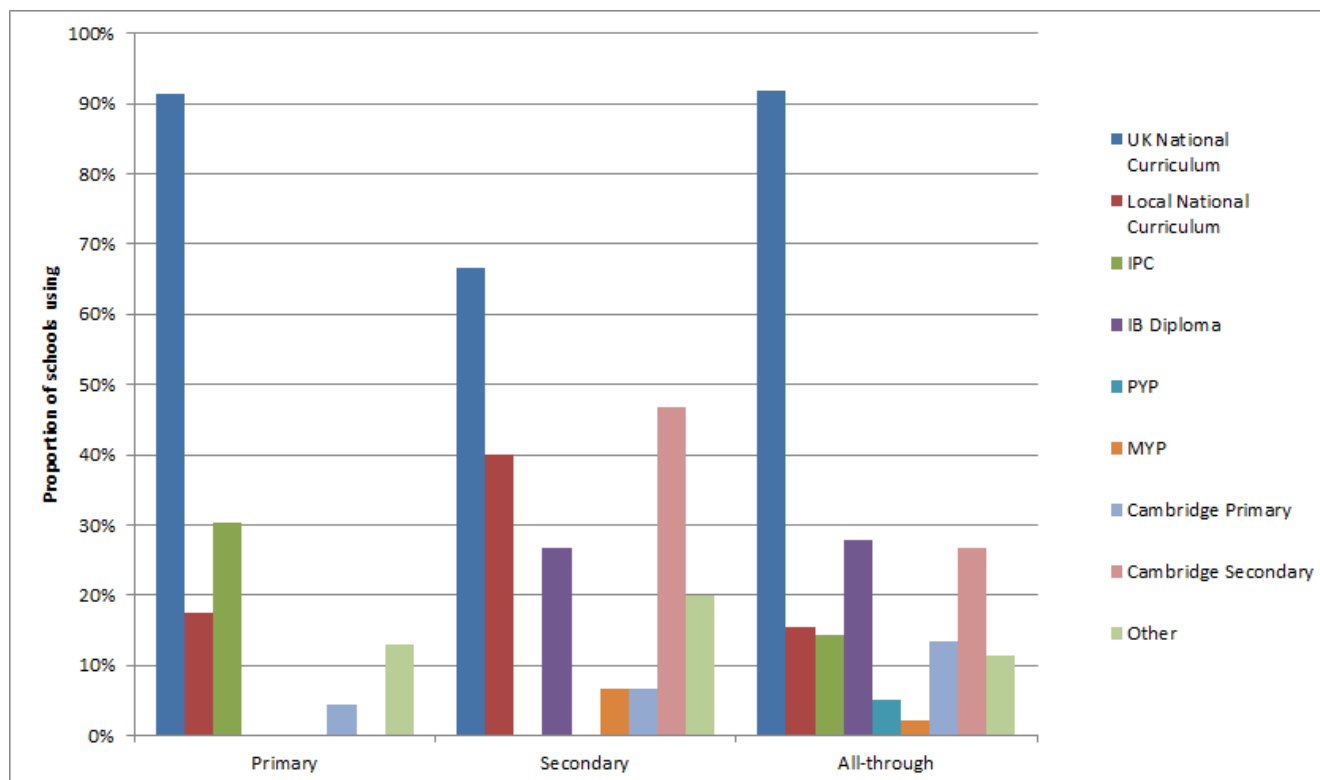
IB Diploma Results

	COBIS	ISC	Difference	IBO	Difference
IB Pass Rate	95%	96%	0%	78%	17%
Average IB Points	33	34	-1	30	3

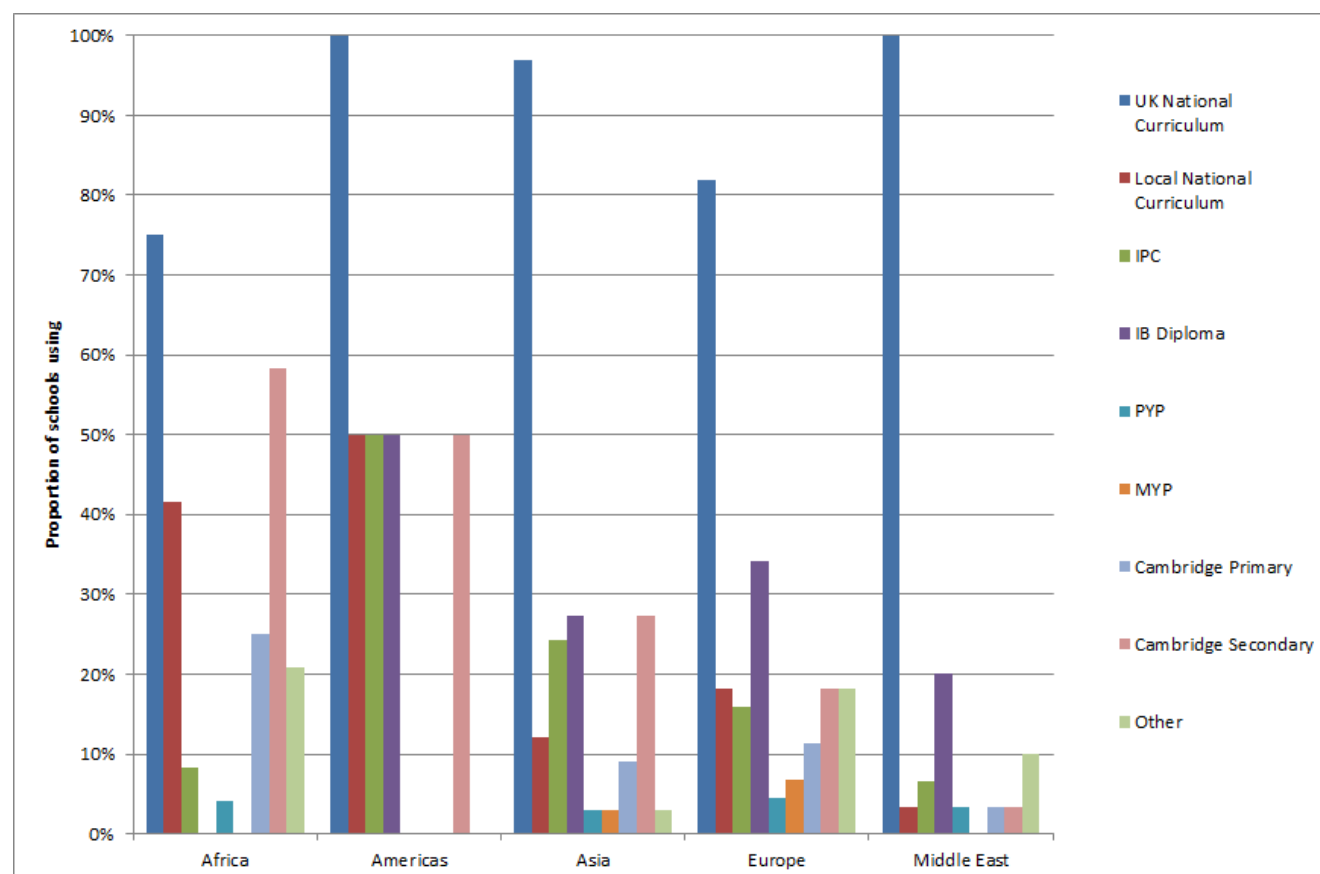
Only highlighted differences can be considered significant.

Curriculum Followed

Curriculum by Phase

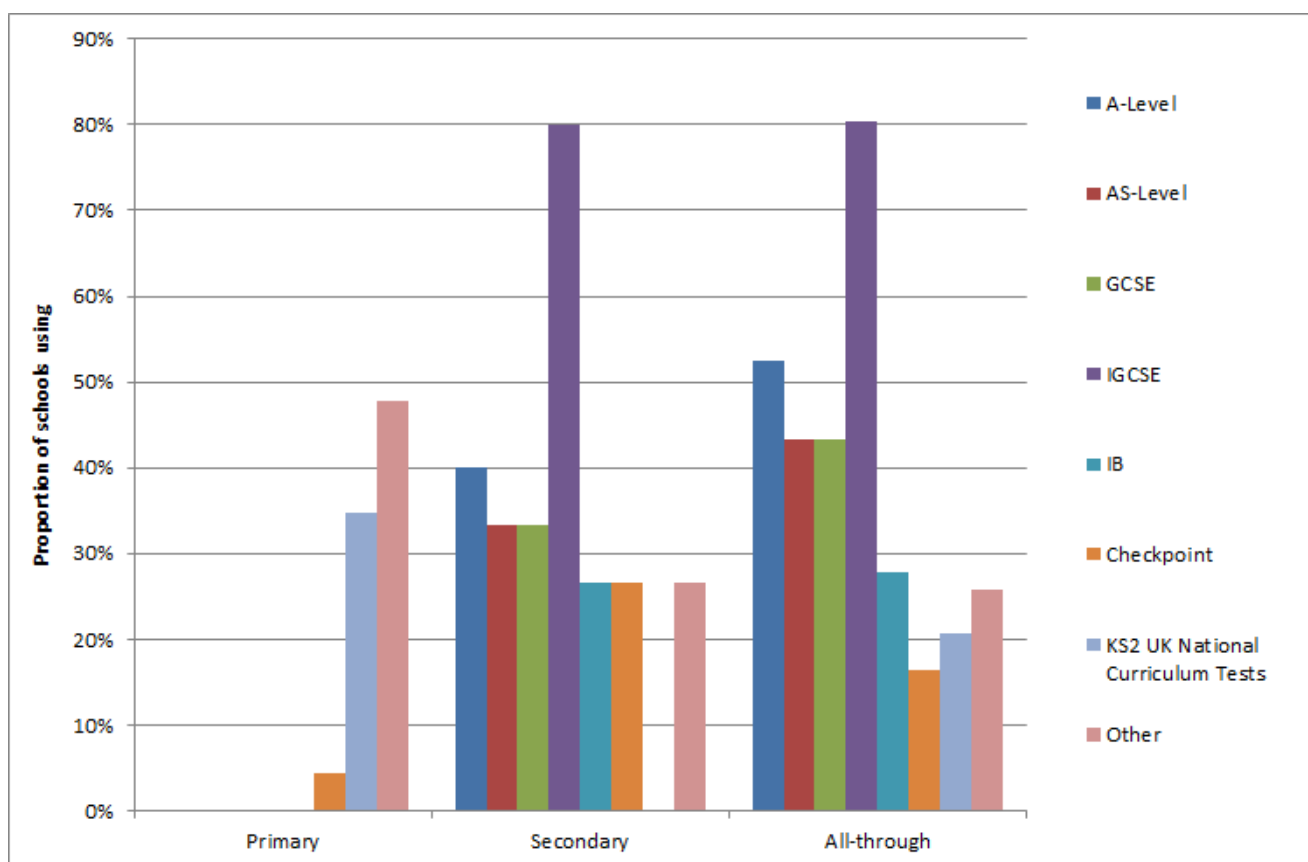


Curriculum by Region

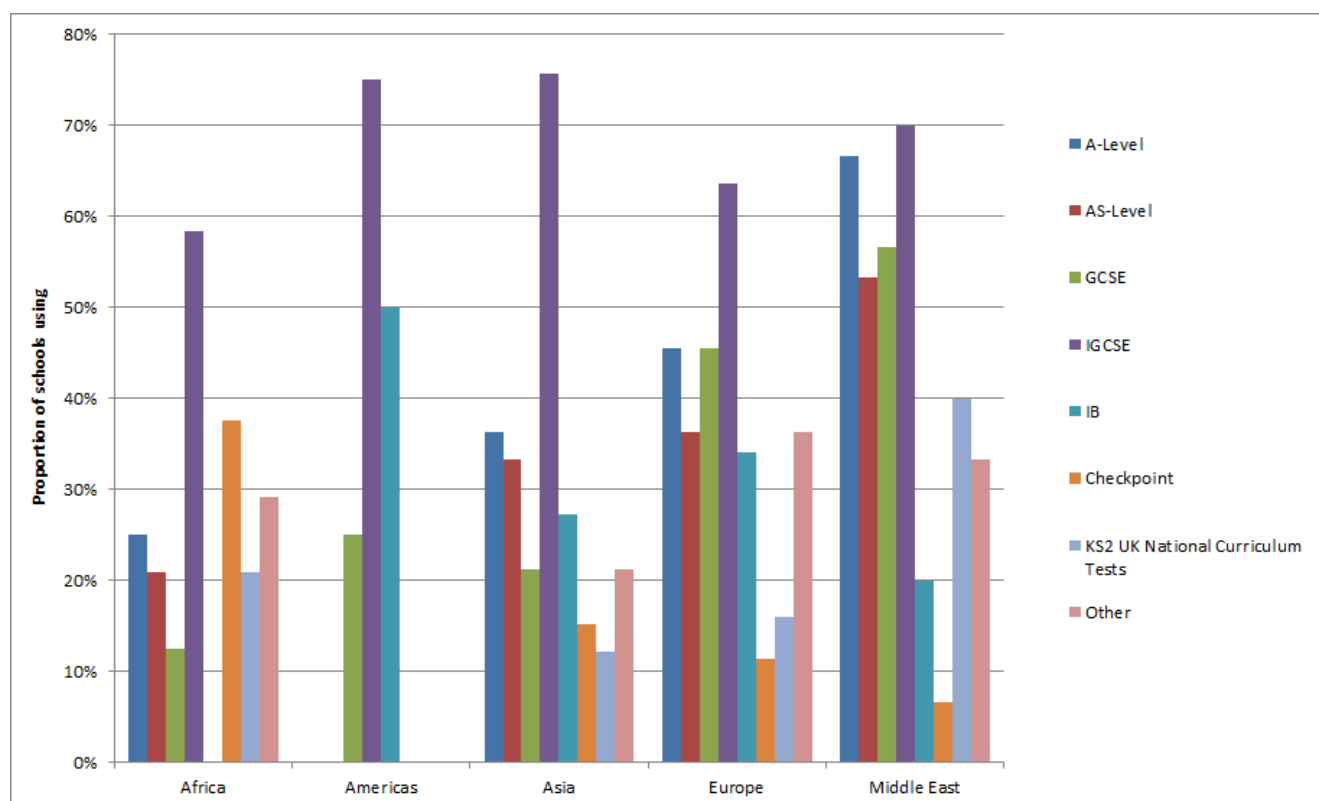


Assessments / Examinations Offered

Assessments / Examinations Offered by Phase



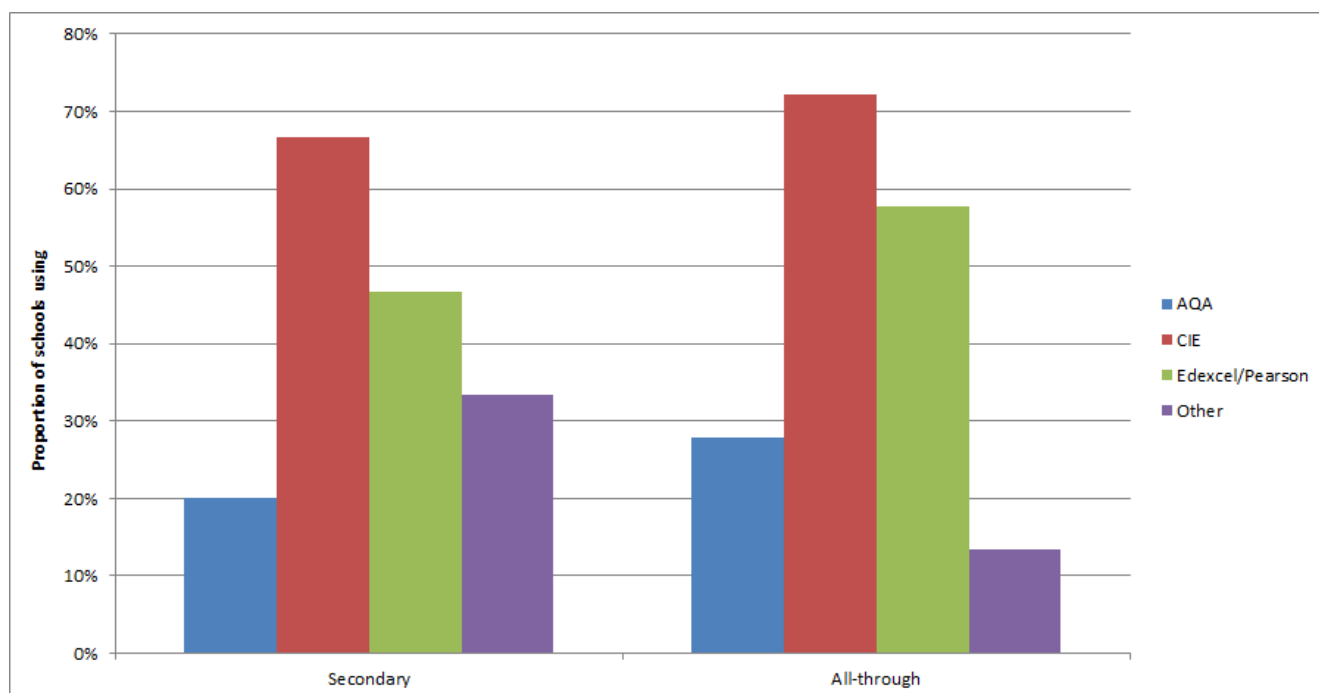
Assessments / Examinations Offered by Region



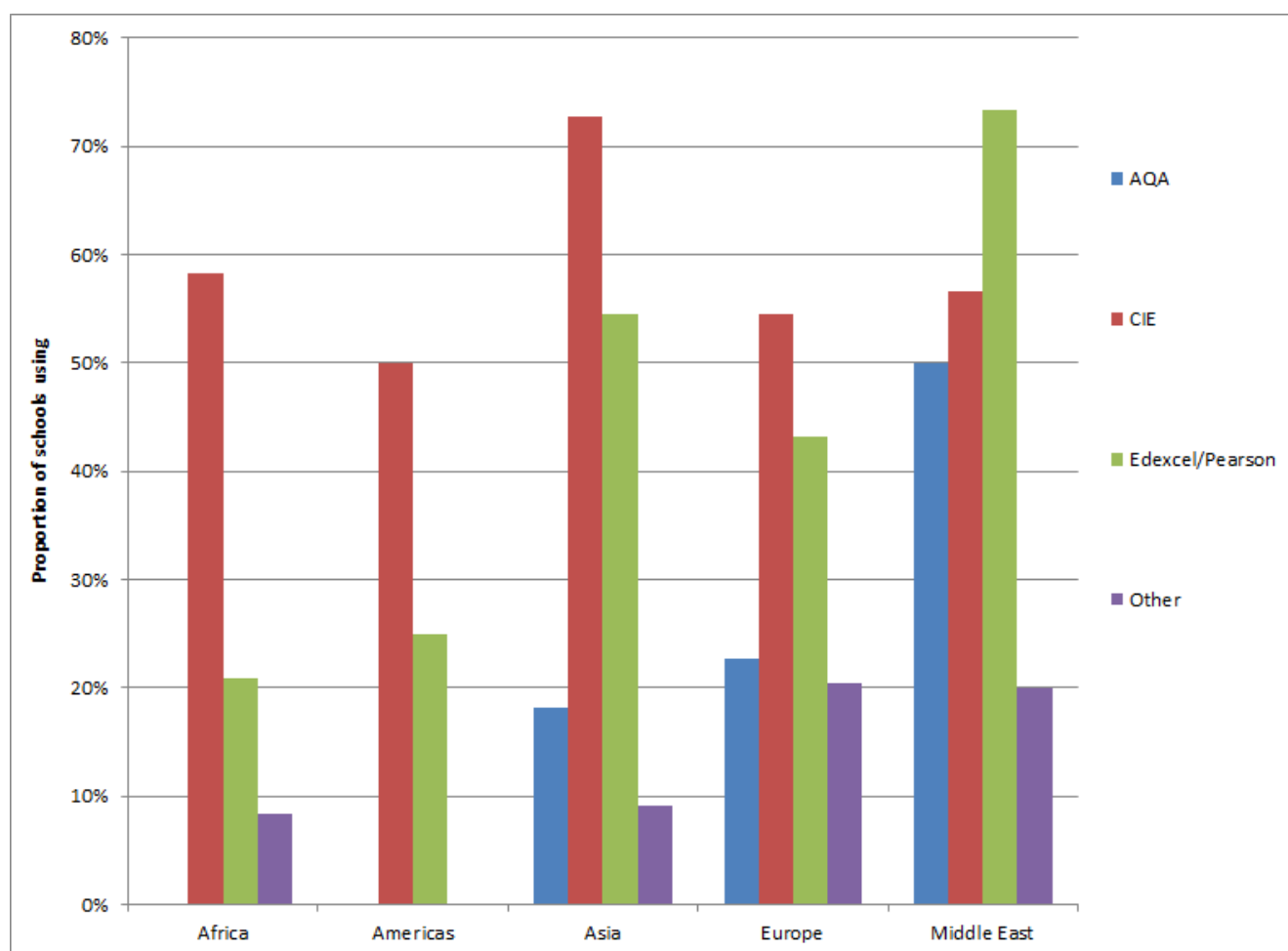
Of those selecting 'Other', Local examination boards were selected by 16.7% of respondents, along with a number of minority suppliers.

Awarding Bodies Used

Awarding Bodies by Phase

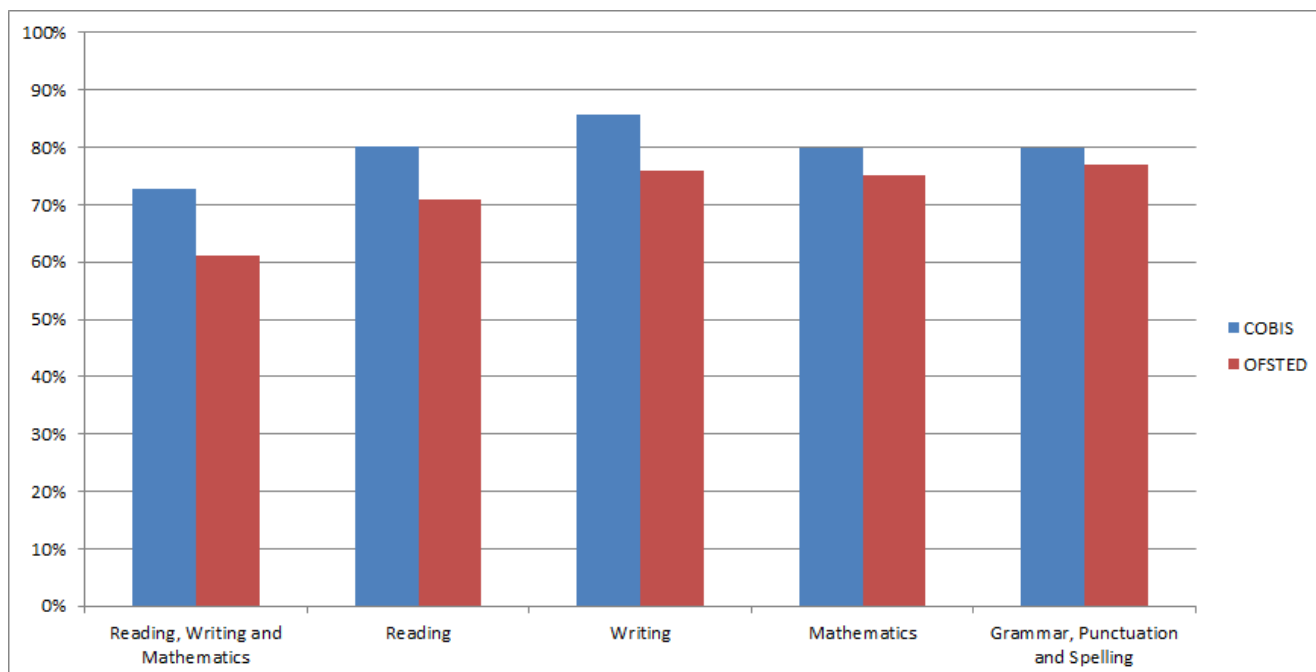


Awarding Bodies by Region

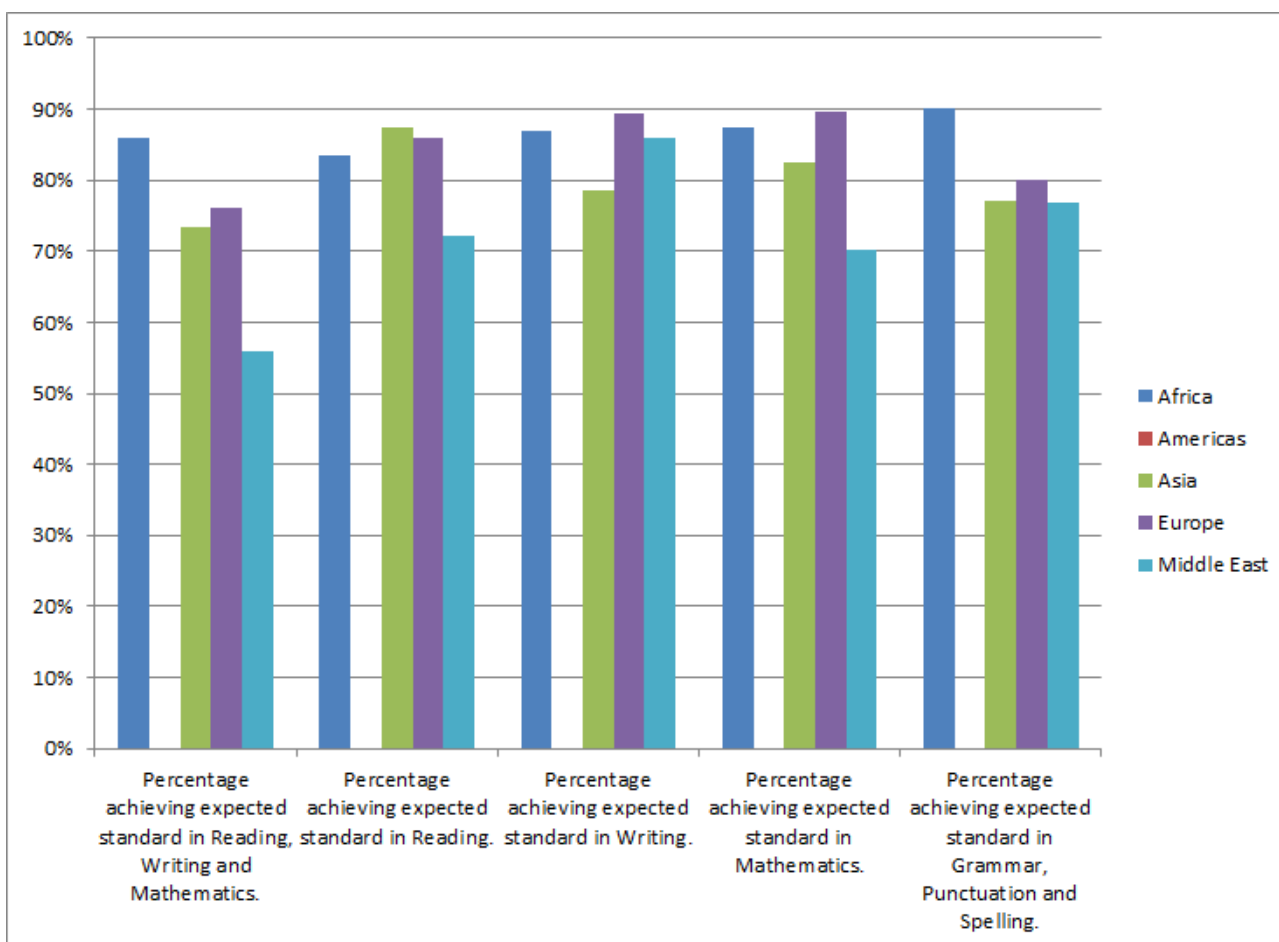


Primary Phase Results

Primary Phase Results versus Benchmarks



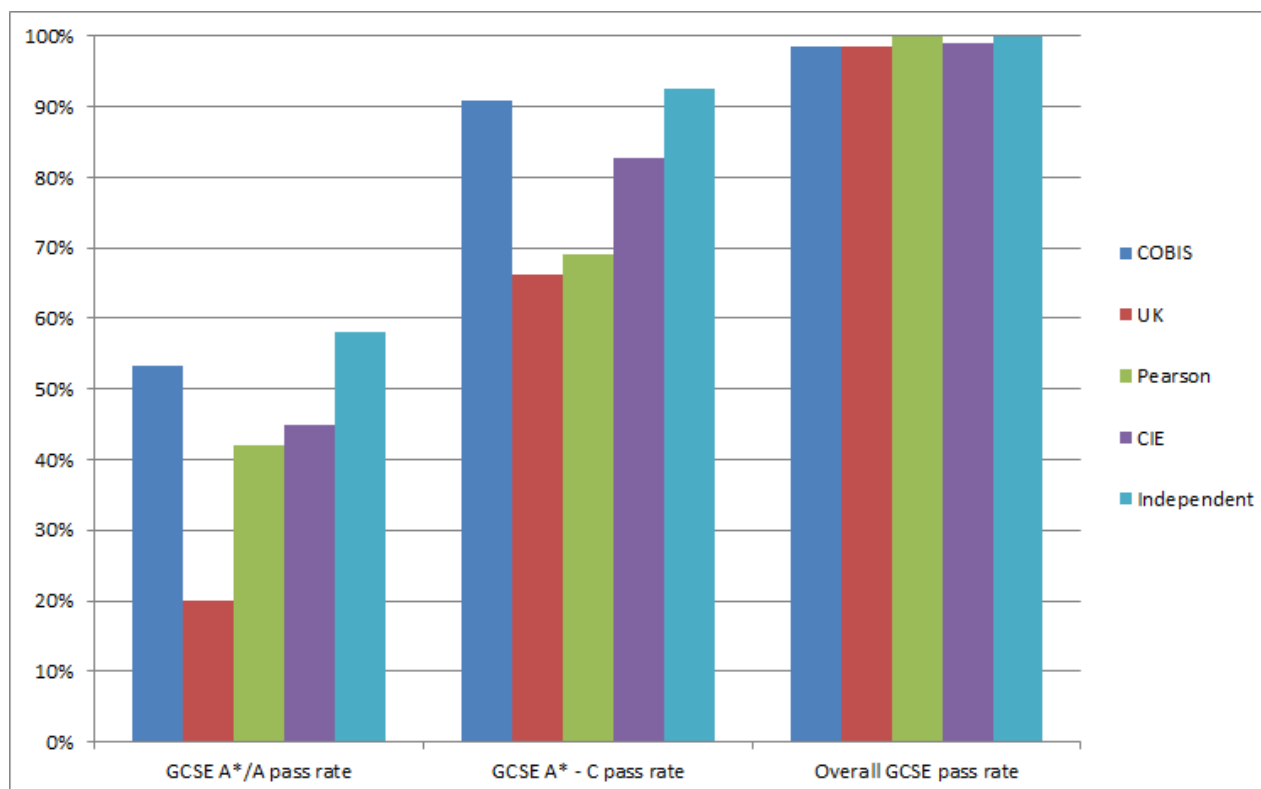
Primary Phase Results by Region



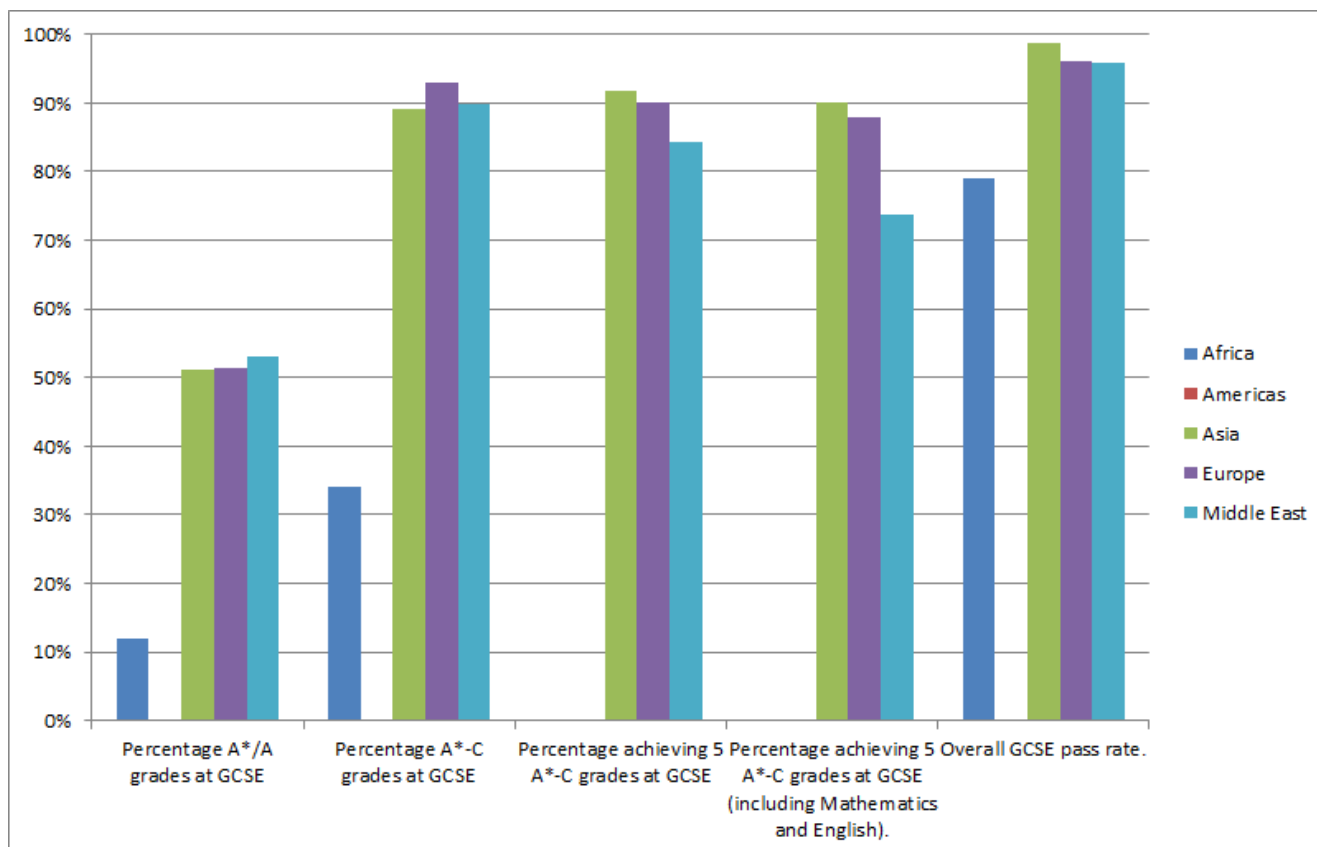
Insufficient responses were received from schools in the Americas to generate data at this level.

GCSE / IGCSE Results

GCSE / IGCSE Results versus Benchmarks



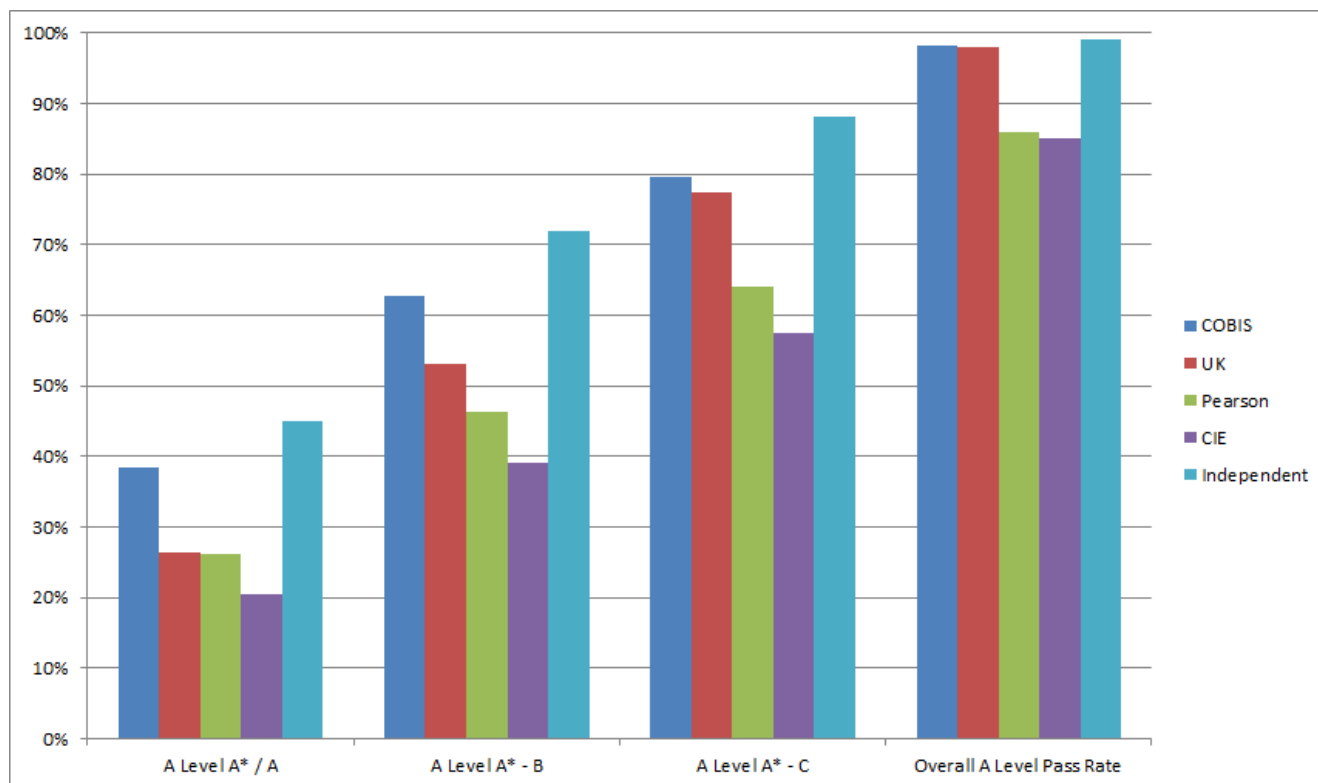
GCSE / IGCSE Results by Region



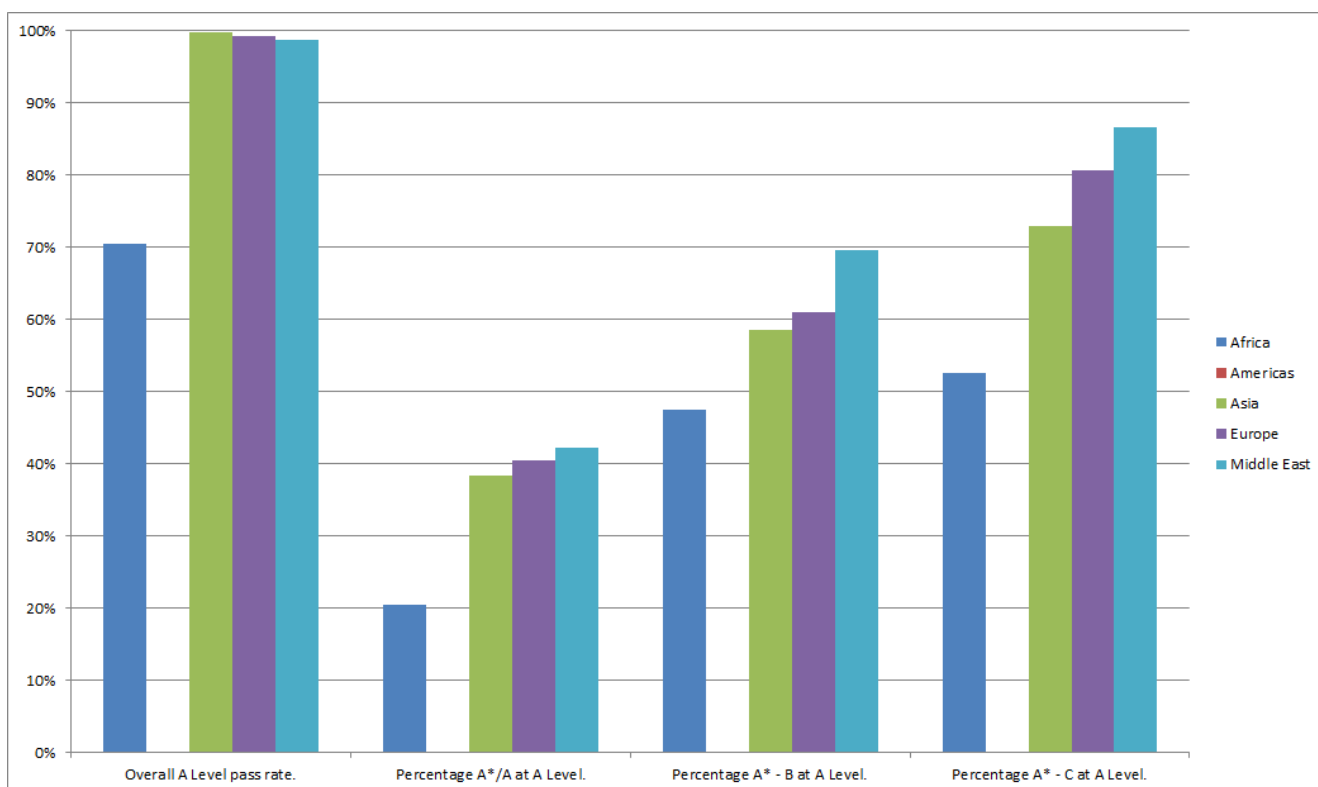
Insufficient responses were received from schools in the Americas to generate data at this level.

A Level Results

A Level Results versus Benchmarks



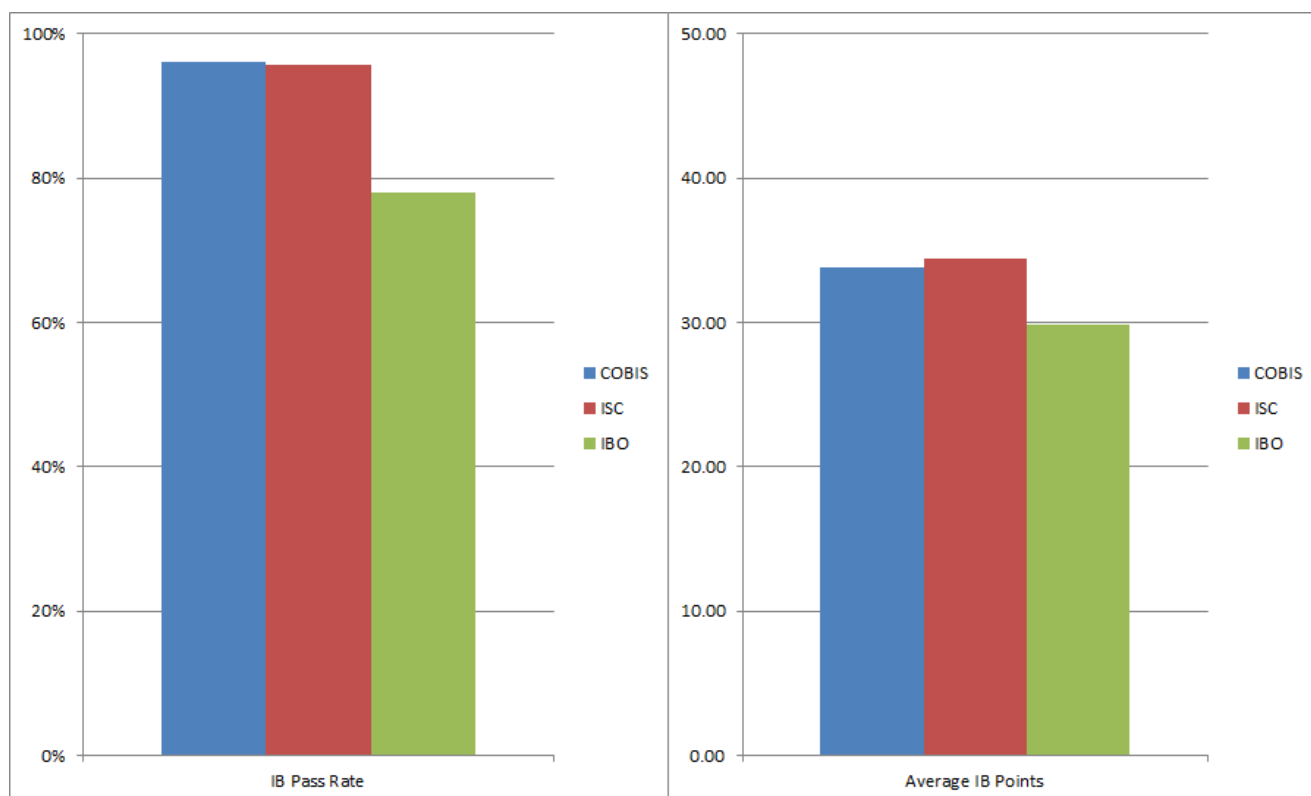
A Level Results by Region



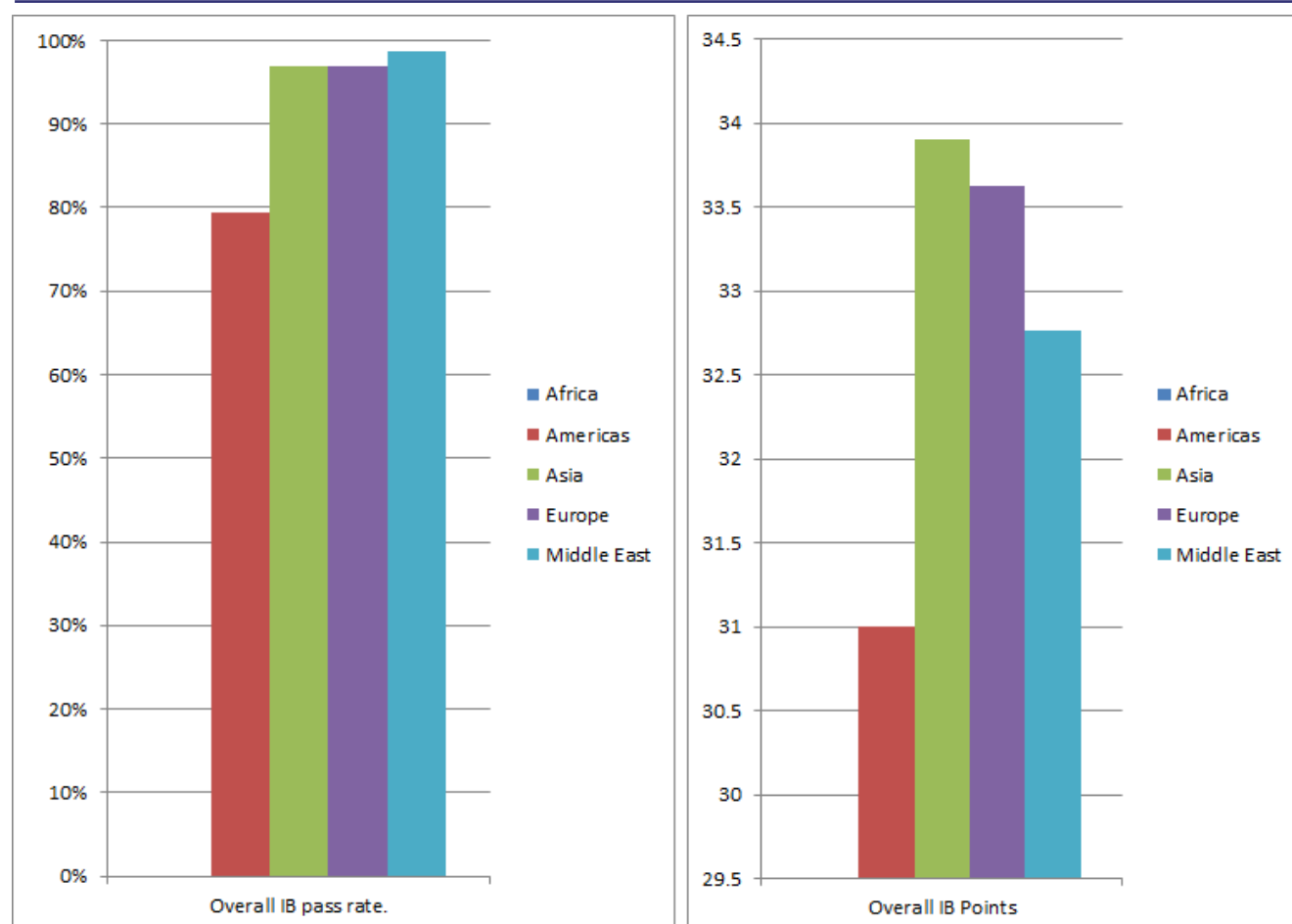
Insufficient responses were received from schools in the Americas to generate data at this level.

IB Diploma Results

IB Diploma Results versus Benchmarks



IB Diploma Results by Region



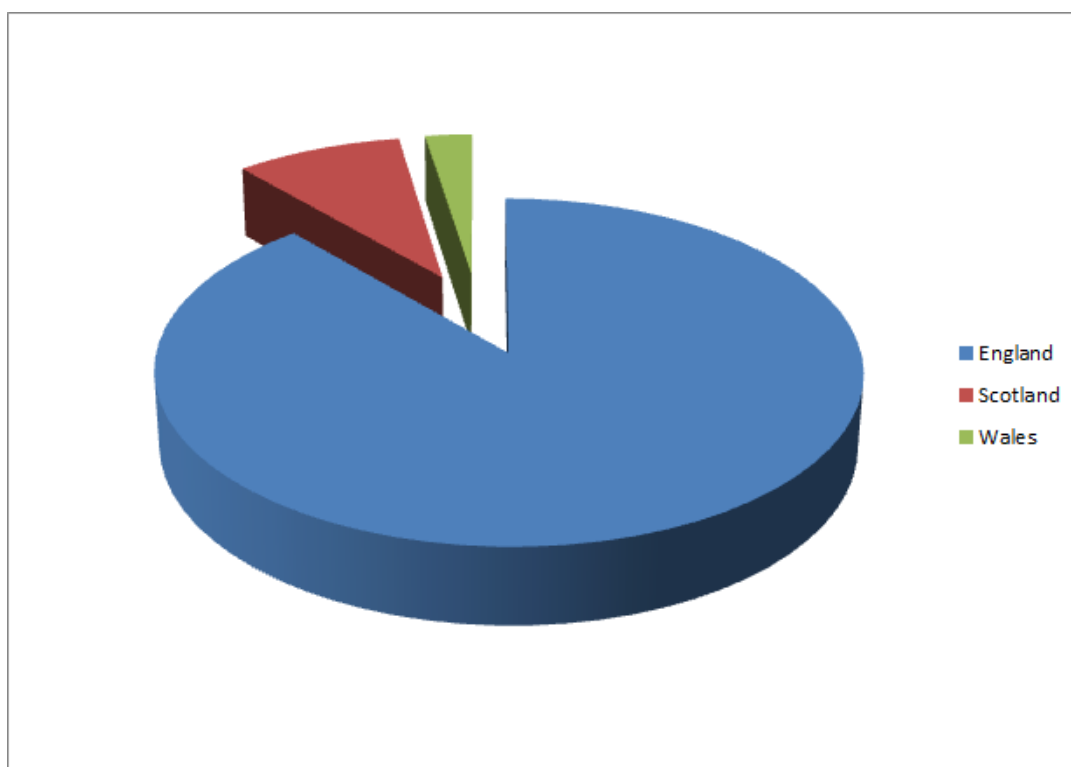
University Destinations

Proportion of leavers going on to University/HE.	92%
Proportion of leavers going on to University/HE in the UK.	52%
Proportion of leavers going on to University/HE in the host country.	15%

Top UK University Destinations

University	Number of Students	Proportion of UK Leavers
University College London	31	11%
Bath	23	8%
Manchester	23	8%
Kent	20	7%
Edinburgh	16	6%
Essex	13	5%
King's College London	12	4%
Surrey	12	4%
Imperial College	9	3%
Aston University	8	3%
Exeter	8	3%
Warwick	8	3%
York	8	3%
Cambridge	7	2%
Durham	7	2%
West of England	6	2%
Lincoln	6	2%
Oxford	6	2%
Swansea	5	2%
Nottingham	4	1%
Queen Mary, London	4	1%

Top UK University Destinations by Nation



Top Non-UK University Destinations

University	Number of Students	Proportion of Non-UK Leavers
USA	203	42%
Canada	89	19%
Australia	69	14%
Netherlands	39	8%
France	10	2%
Germany	9	2%
Europe	8	2%
Egypt	7	1%
Pakistan	6	1%
Korea	5	1%
India	4	1%
South Africa	4	1%
Spain	4	1%

Top Non-UK University Destinations by Region

